

Playford Disability Access and Inclusion Plan

Easy Read Survey



Want some help to do the survey?

Talk to Roxanne:



Phone: 8256 0333



Email: connected@playford.sa.gov.au



Web: playford.engagementhub.com.au

About this survey



The City of Playford wrote this survey.

When you see the word "we" it means the City of Playford.

When you see the word "Council" it means the City of Playford.



This survey is written in an easy to read way.

We use pictures to explain some ideas.

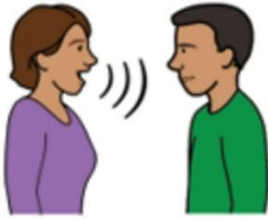
Word

Hard word



The first time we write a hard word, the word is in **bold**.

We will explain what the word means.



You can ask for help to fill in the survey.

A friend, family member or Council worker may be able to help you.



We are writing a new **Disability Access and Inclusion plan**.

This plan tells Council how to help people with disability feel welcome and happy.

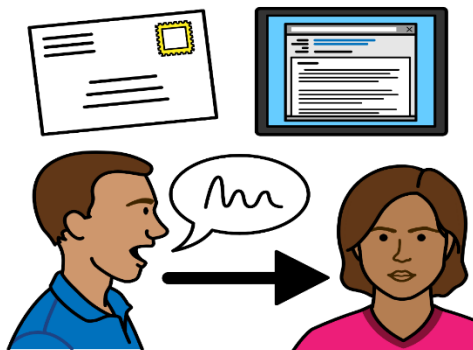


To write the plan we talk to lots of people who live and work in **Playford**.

Playford is a group of suburbs that the Council looks after.



We want to know how to make Playford better for people with disability.



We will listen to what you say.



We will think about all the ideas.

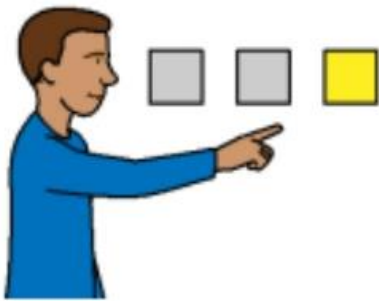


We will then write a new plan.

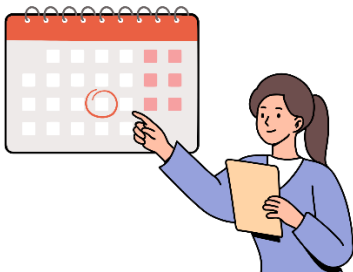


You can help us to write the plan by doing this **survey**.

A survey is set of questions.





You can tell us what you think.



You must finish the survey before Sunday the 13th of July 2025.

Next we will ask some questions

When you see a  draw a tick in a circle to choose your answer

When you see a  write your answer on the lines



What one thing would make you feel welcome and happy in Playford?



It can be a place, event, feeling, or a something new you want



What suburb do you live in?





Do you have a disability?



☐ Yes

☐ No



How old are you?





What is your gender?



☐ Male

☐ Female

☐ Non-binary

☐ Other _____



Are you an Aboriginal and / or Torres Strait Islander Person?



☐ Yes

☐ No



What language do you speak at home?



☐ English

☐ Different language



Do you belong to the **LGBTQIA+** community?



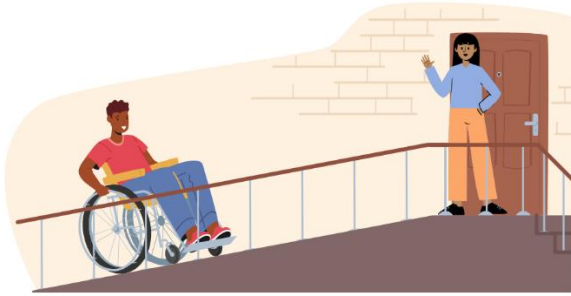
This means you are gay, lesbian, bisexual, transgender, queer, intersex, asexual, or something else.

☐ Yes

☐ No

The Council does different things to help people with a disability.

We want to know what things we do well, and what things we could do better.



Do you feel welcome at Council events, buildings, or services?

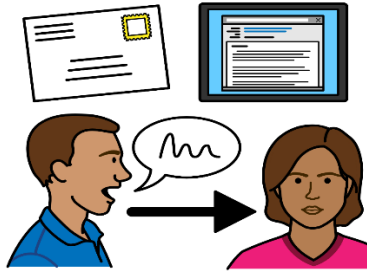


- ☐ Yes
- ☐ Sometimes
- ☐ No



What can Council do to help you feel more welcome?





Do you know how to tell Council what you think?



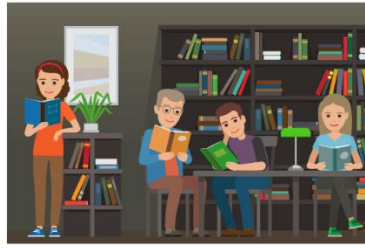
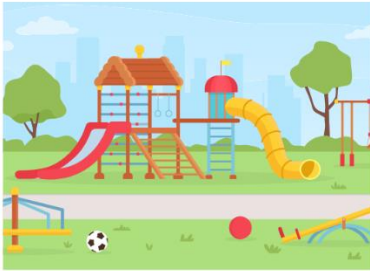
☐ Yes

☐ No



How could Council listen to you better?





Is it easy to visit Council places like libraries, parks, and events?



- ☐ Yes
- ☐ Sometimes
- ☐ No



Is it easy to use the footpaths or roads near your house?



- ☐ Yes
- ☐ Sometimes
- ☐ No



Do you know where to find information about Council services, programs and buildings?

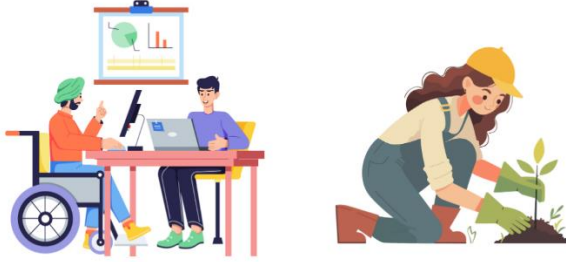


- ☐ Yes
- ☐ Sometimes
- ☐ No



How could Council share information in a better way?





Do you know Council can help you learn new things and find jobs?



☐ Yes

☐ No



Do you think there are enough places in Playford for people with a disability to work or get the training they need?



☐ Yes

☐ Sometimes

☐ No

Thinking about the things Council does to help people with disability...



What is important to you?

- ☐ Visiting parks, libraries or other places
- ☐ Going to events and programs
- ☐ Moving around easily (walking, using a wheelchair, driving, riding a bike)
- ☐ Information that is easy to understand
- ☐ Being able to work or volunteer
- ☐ Being a part of Council decisions
- ☐ Children or young people getting disability support
- ☐ People from different cultures getting disability support
- ☐ More people understanding disability

Is there anything else you want to tell us that could help us write our next plan?



Do you want to talk to Council about how they can help people with disability?



☐ Yes

☐ No

Thank you for doing the survey.

When everyone has finished, five people who did the survey will win a gift voucher.

Do you want the chance to win a voucher?



☐ Yes

☐ No

What is your name and phone number or email address?



You can ask someone to help you if you aren't sure.



Name _____



Phone Number _____



Email Address _____