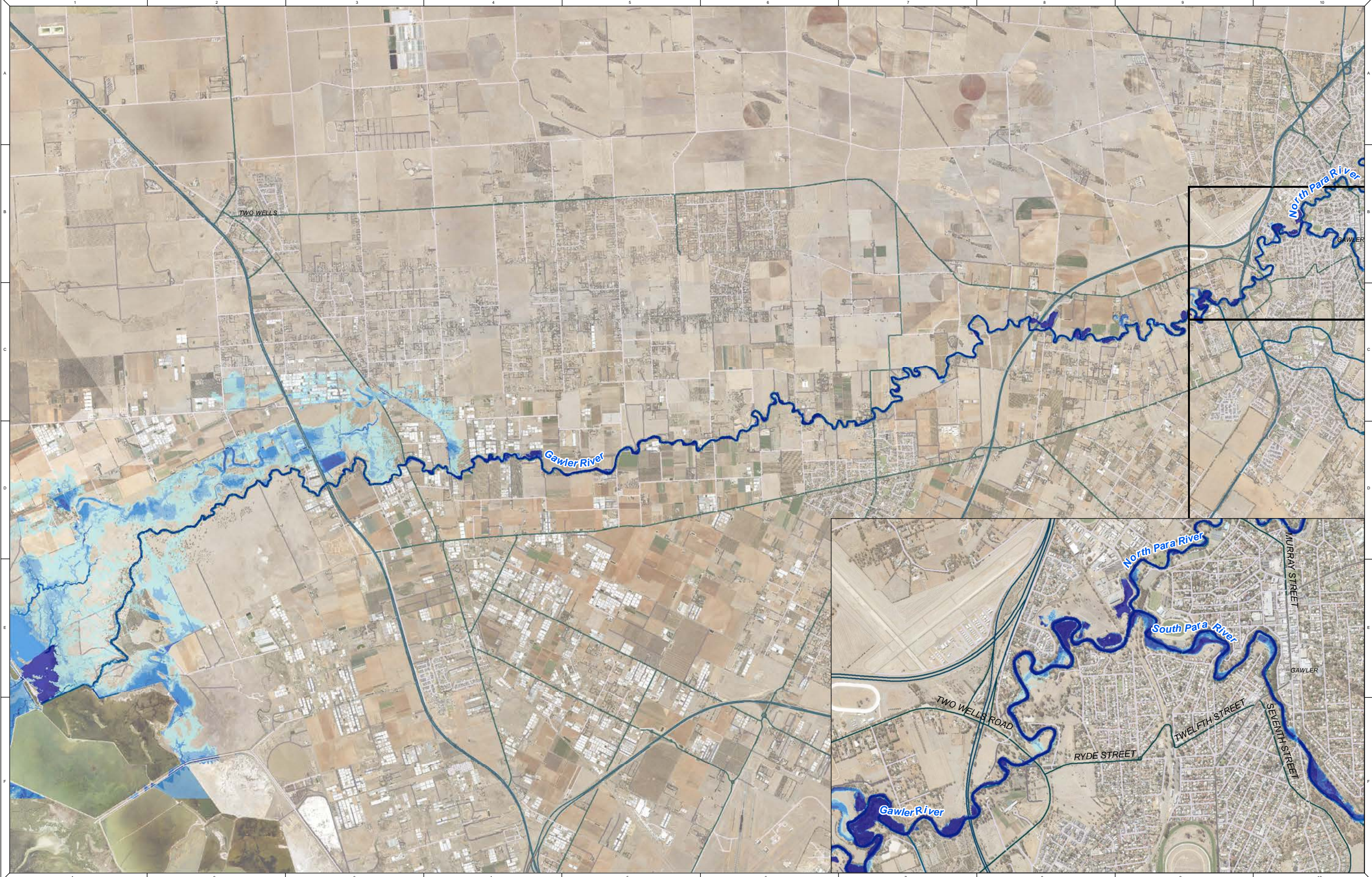




APPENDIX E FLOOD MAPPING

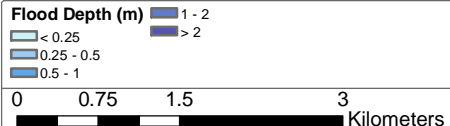
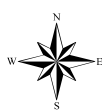




NOTE
Water Technology Pty. Ltd. has prepared this document in accordance
with instruction of GRFMA
for their specific use.

DISCLAIMER
GRFMA and Water Technology
Pty. Ltd. does not warrant that this document is definitive nor free from error and
does not accept liability for any loss caused or arising from reliance upon
information provided herein.

Contains DataSA Information



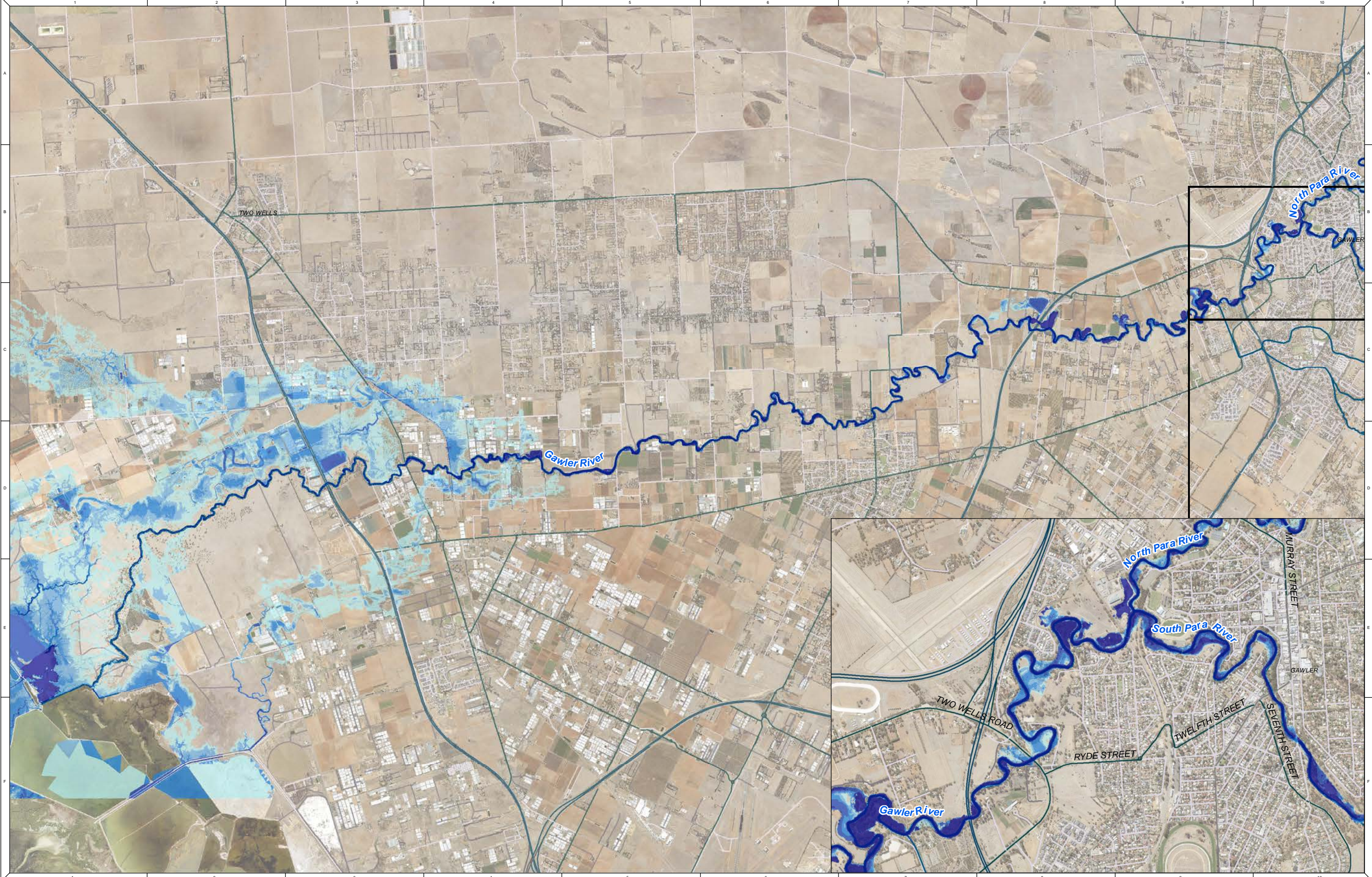
1:69,500 at A3



Gawler River Stormwater Management Plan

Figure A.01: 10% AEP - Base Case - Flood Depth

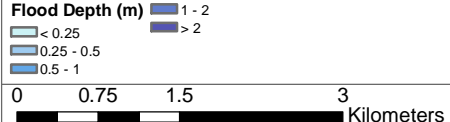
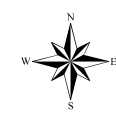
REFERENCE: M121030183_Gawler River SMP\Spatial\Workspaces\21030183_Gawler_River_SMP_Results.mxd
DATE: 18/09/2022

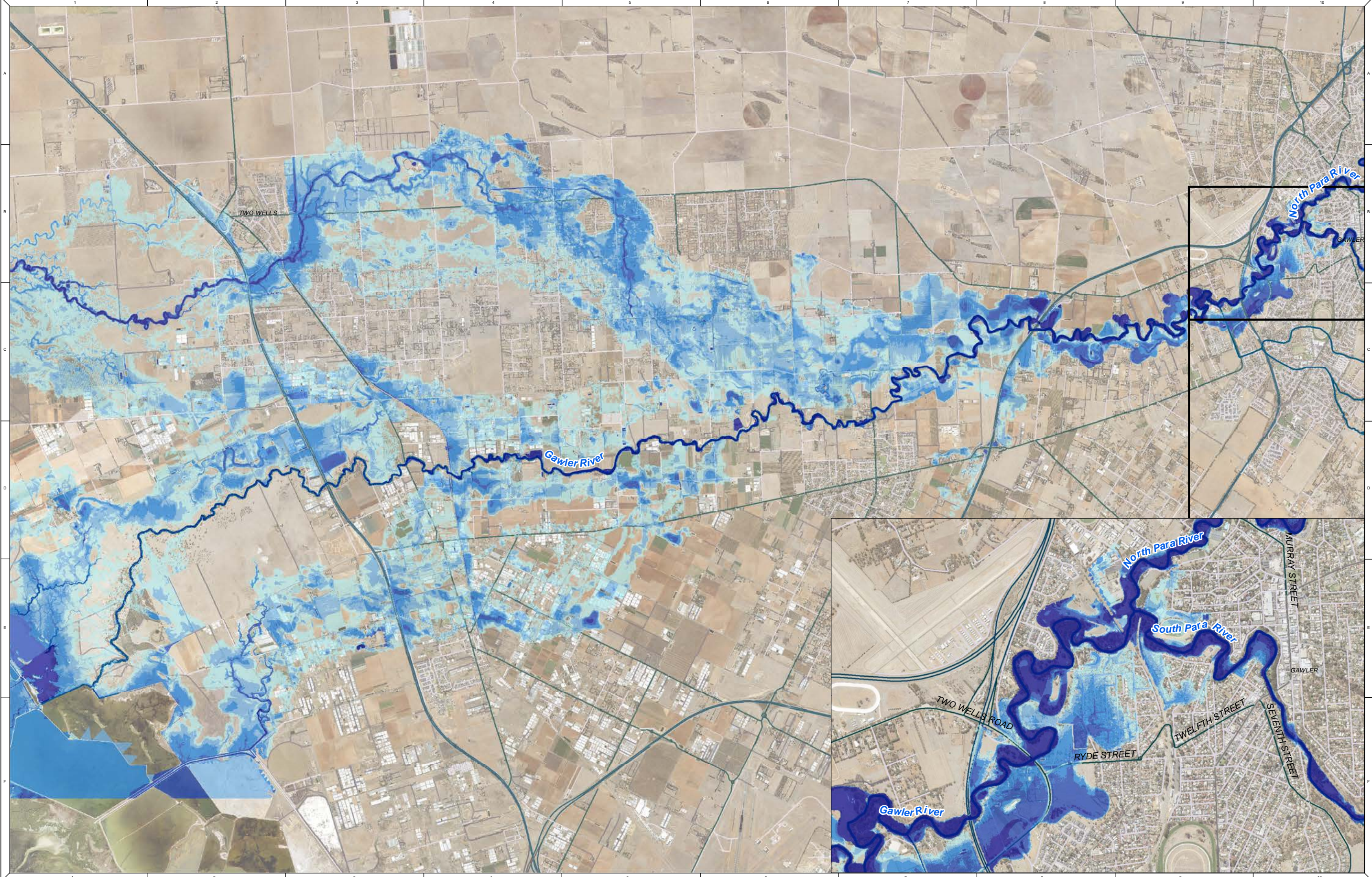


NOTE
Water Technology Pty. Ltd. has prepared this document in accordance
with instruction of GRFMA
for their specific use.

DISCLAIMER
GRFMA and Water Technology
Pty. Ltd. does not warrant that this document is definitive nor free from error and
does not accept liability for any loss caused or arising from reliance upon
information provided herein.

Contains DataSA Information

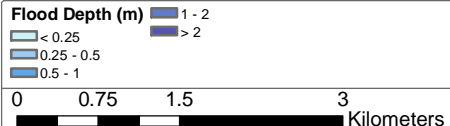


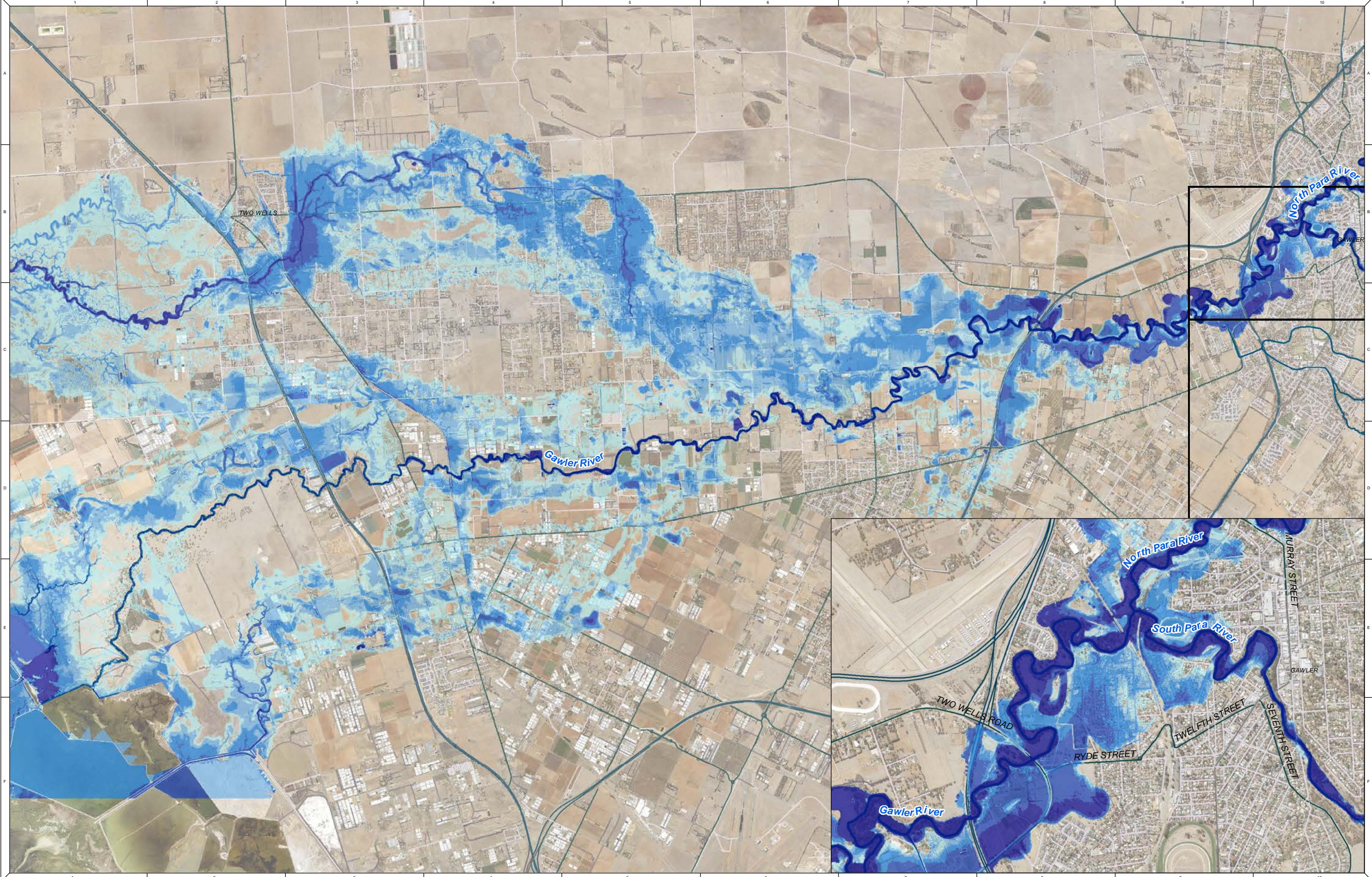


NOTE
Water Technology Pty. Ltd. has prepared this document in accordance with instruction of GRFMA for their specific use.

DISCLAIMER
GRFMA and Water Technology Pty. Ltd. does not warrant that this document is definitive nor free from error and does not accept liability for any loss caused or arising from reliance upon information provided herein.

Contains DataSA Information

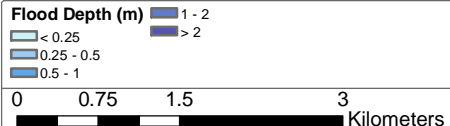




NOTE
Water Technology Pty. Ltd. has prepared this document in accordance
with instruction of GRFMA
for their specific use.

DISCLAIMER
GRFMA and Water Technology
Pty. Ltd. does not warrant that this document is definitive nor free from error and
does not accept liability for any loss caused or arising from reliance upon
information provided herein.

Contains DataSA Information



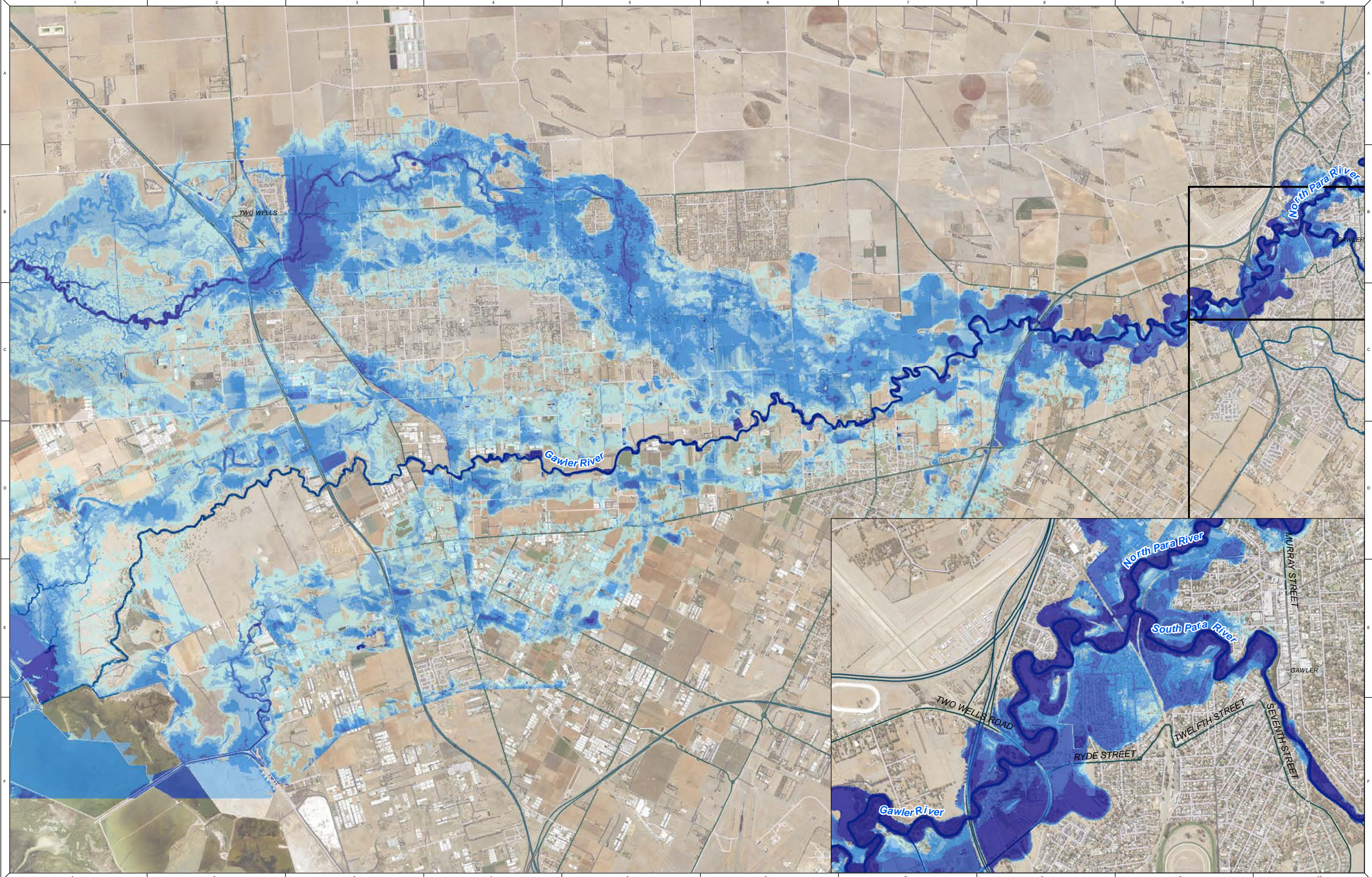
1:69,500 at A3



Gawler River Stormwater Management Plan

Figure A.04: 1% AEP - Base Case - Flood Depth

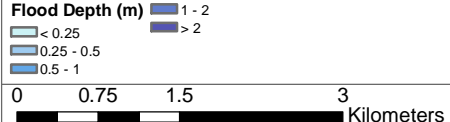
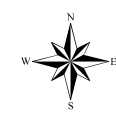
REFERENCE: M121030183_Gawler River SMP\Spatial\Workspaces\21030183_Gawler River SMP_Results_02J.mxd
DATE: 19/12/2022

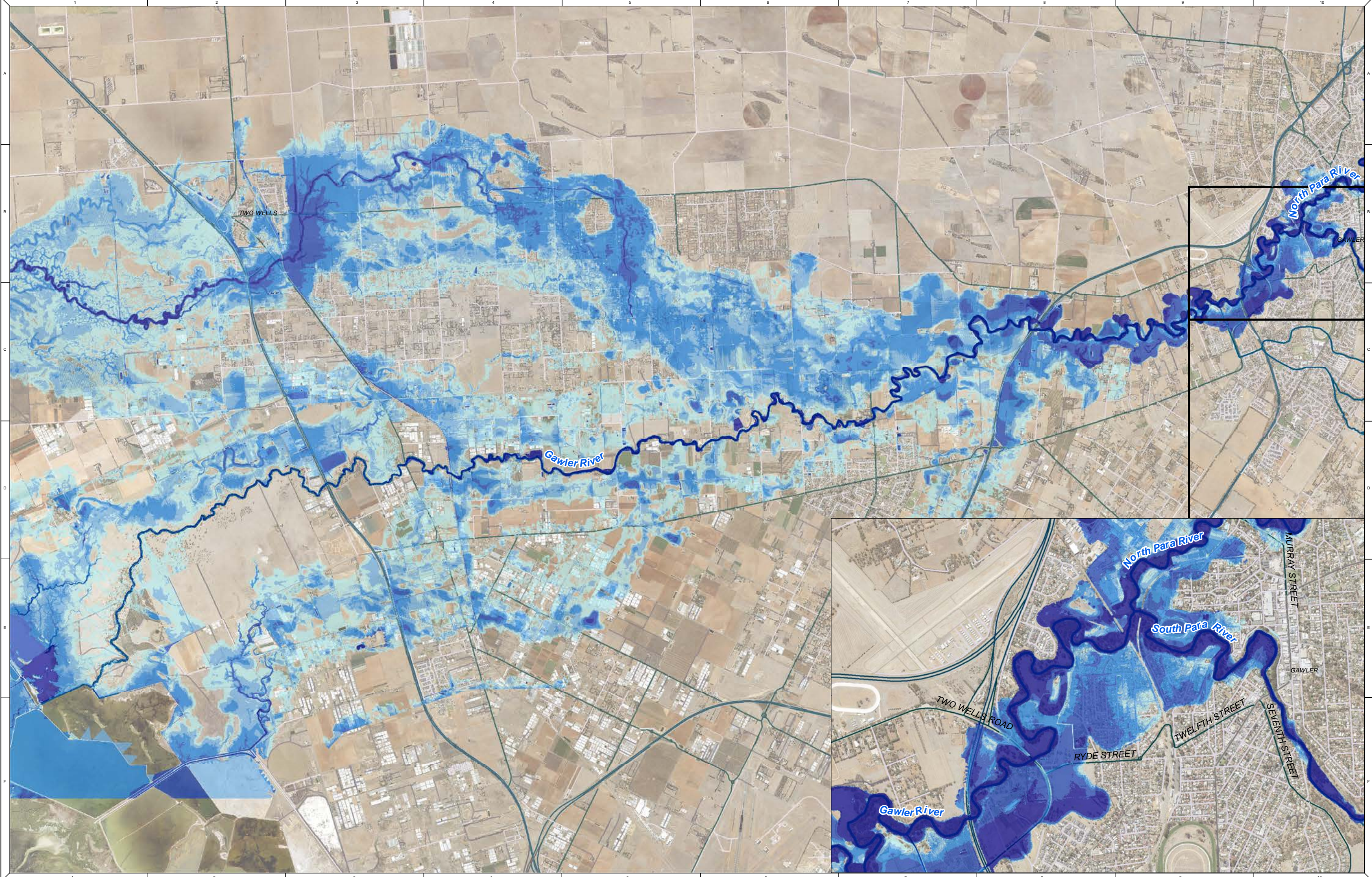


NOTE
Water Technology Pty. Ltd. has prepared this document in accordance
with instruction of GRFMA
for their specific use.

DISCLAIMER
GRFMA and Water Technology
Pty. Ltd. does not warrant that this document is definitive nor free from error and
does not accept liability for any loss caused or arising from reliance upon
information provided herein.

Contains DataSA Information

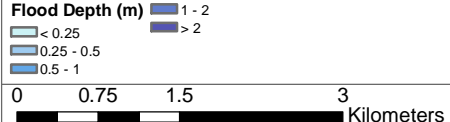
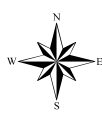




NOTE
Water Technology Pty. Ltd. has prepared this document in accordance
with instruction of GRFMA
for their specific use.

DISCLAIMER
GRFMA and Water Technology
Pty. Ltd. does not warrant that this document is definitive nor free from error and
does not accept liability for any loss caused or arising from reliance upon
information provided herein.

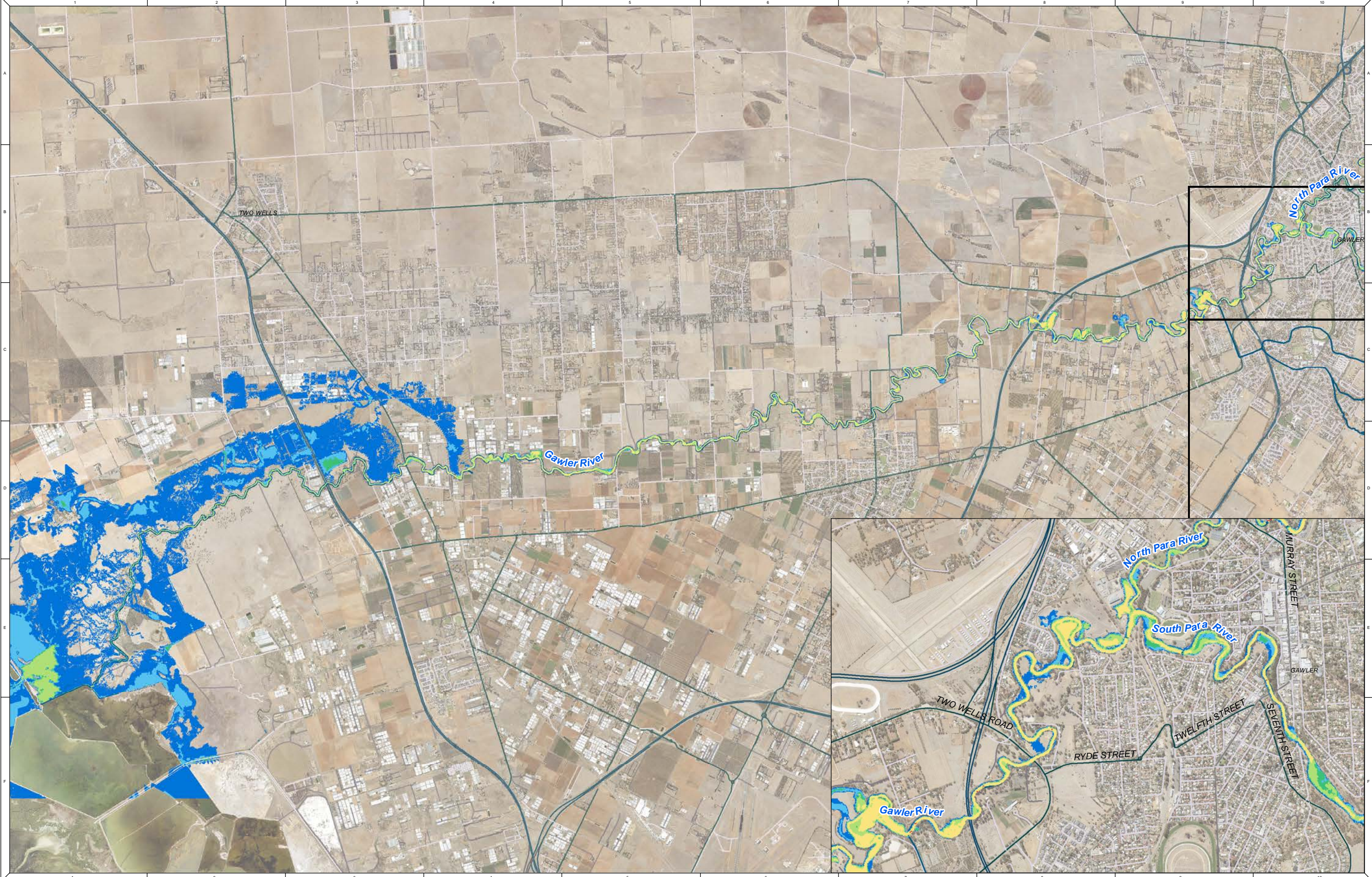
Contains DataSA Information



Gawler River Stormwater Management Plan

Figure A.06: 0.5% AEP - Base Case - Flood Depth

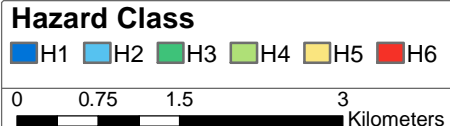
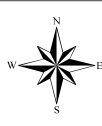
REFERENCE: M:\21030183_Gawler River SMP\Spatial\Workspaces\21030183_Gawler River SMP_Results_02J.mxd
DATE: 19/12/2022



NOTE
Water Technology Pty. Ltd. has prepared this document in accordance
with instruction of GRFMA
for their specific use.

DISCLAIMER
GRFMA and Water Technology
Pty. Ltd. does not warrant that this document is definitive nor free from error and
does not accept liability for any loss caused or arising from reliance upon
information provided herein.

Contains DataSA Information



1:69,500 at A3

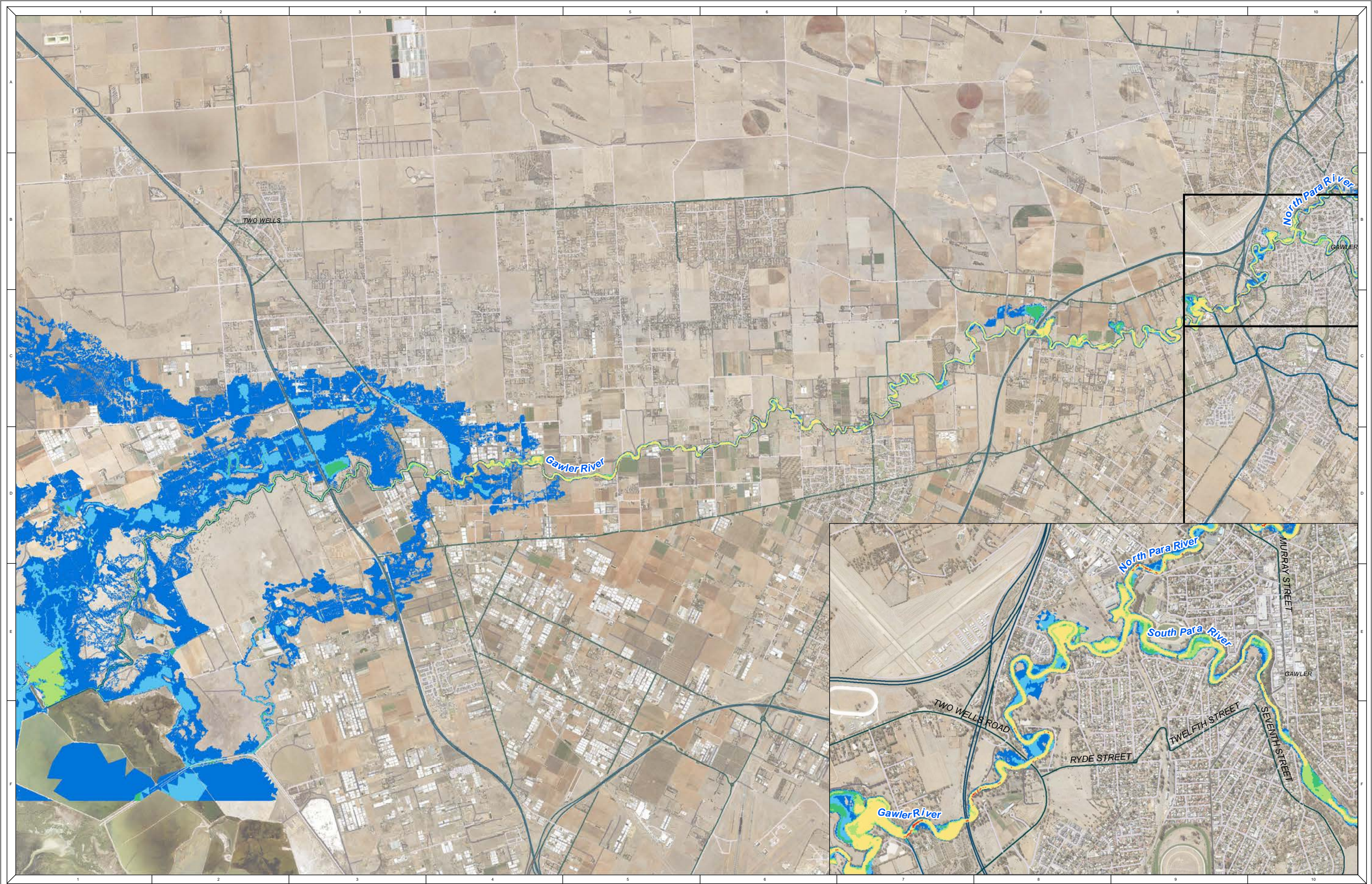


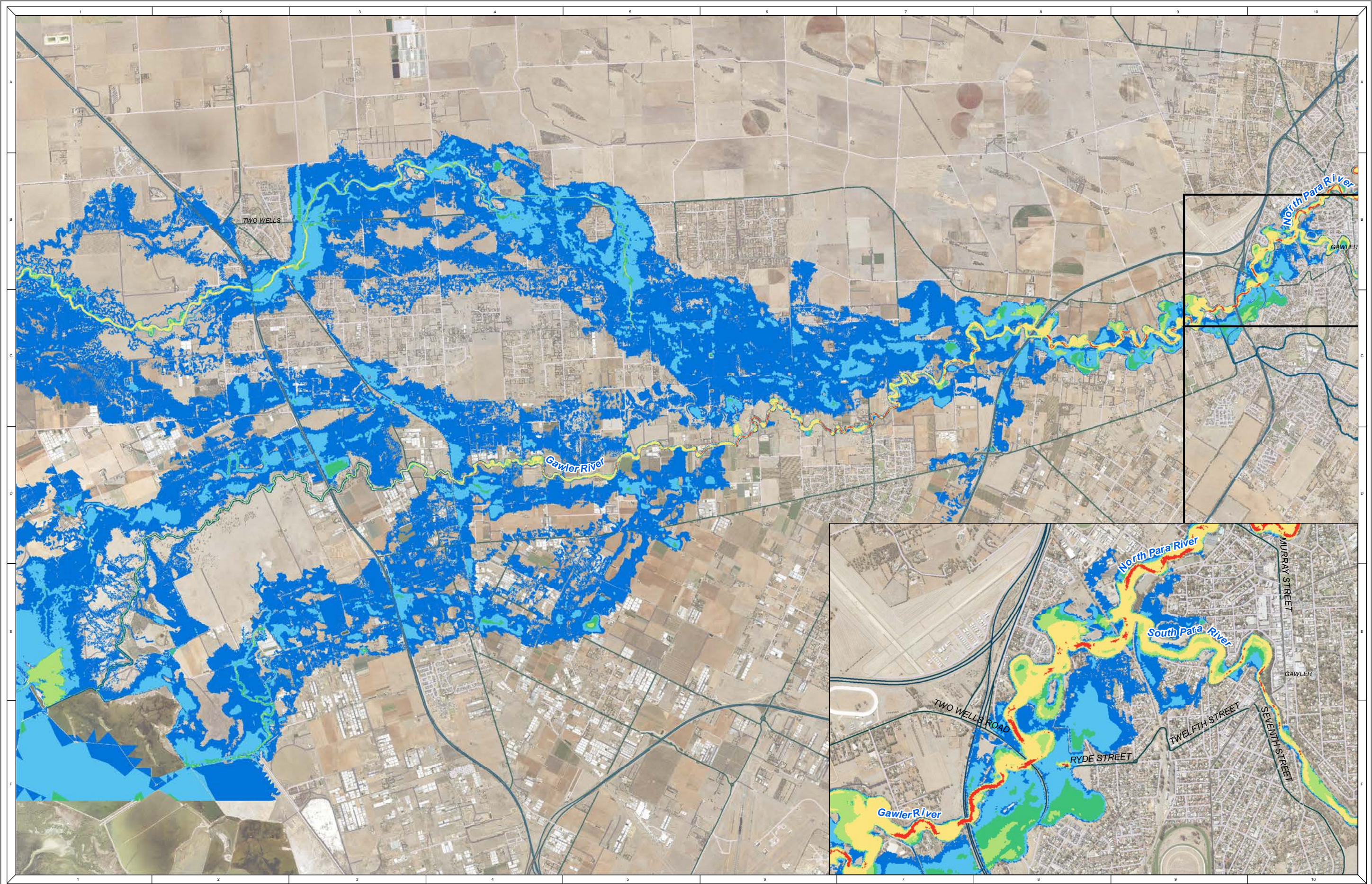
Gawler River Stormwater Management Plan

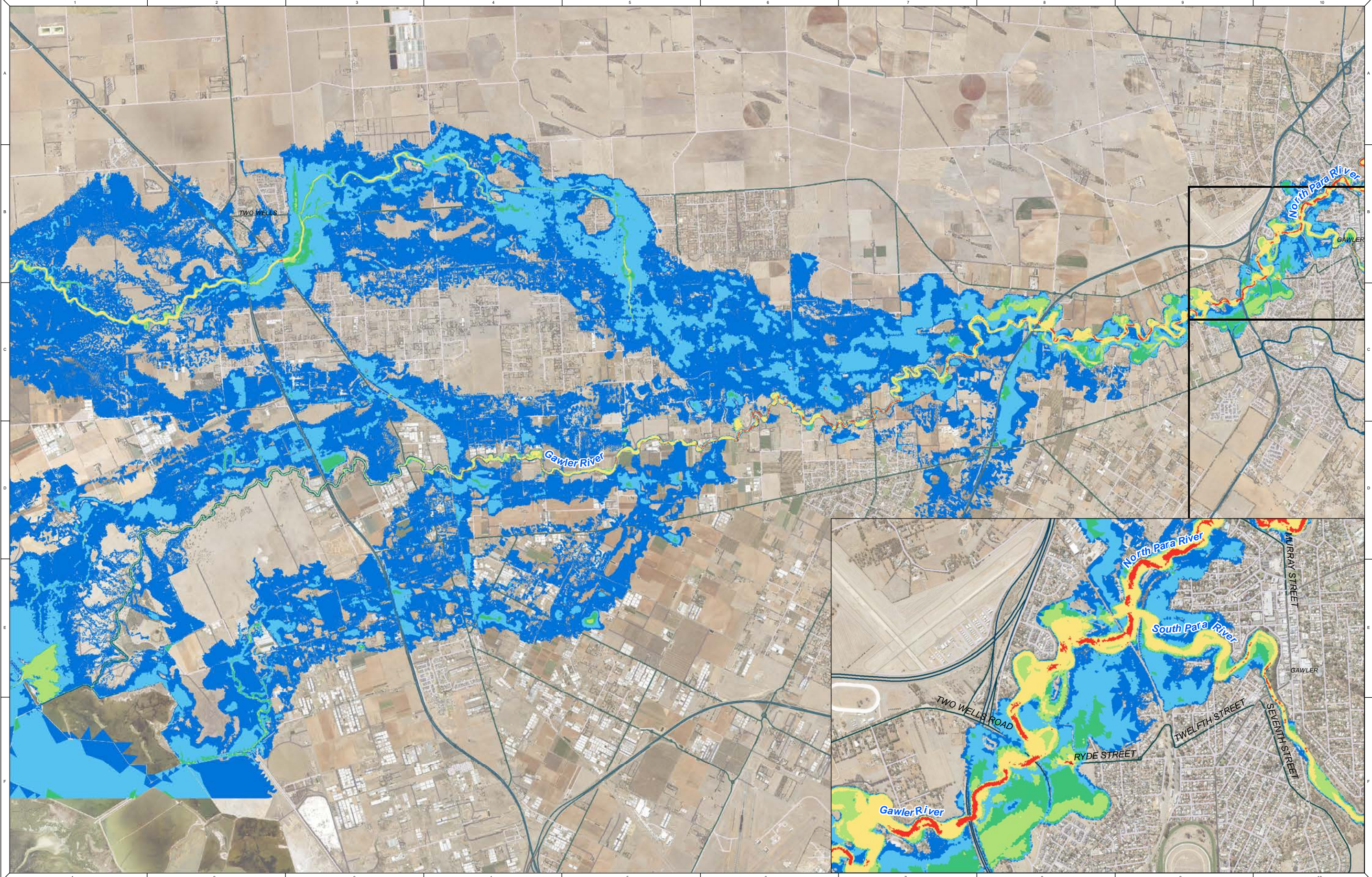
Figure B.01: 10% AEP - Base Case - Flood Hazard

REFERENCE: M121030183_Gawler River SMP\Spatial\Workspaces\21030183_Gawler River SMP_Results_02J.mxd

DATE: 20120222







NOTE
Water Technology Pty. Ltd. has prepared this document in accordance
with instruction of GRFMA
for their specific use.

DISCLAIMER
GRFMA and Water Technology
Pty. Ltd. does not warrant that this document is definitive nor free from error and
does not accept liability for any loss caused or arising from reliance upon
information provided herein.


Contains DataSA Information

Hazard Class

■ H1 ■ H2 ■ H3 ■ H4 ■ H5 ■ H6

0 0.75 1.5 3 Kilometers

1:69,500 at A3

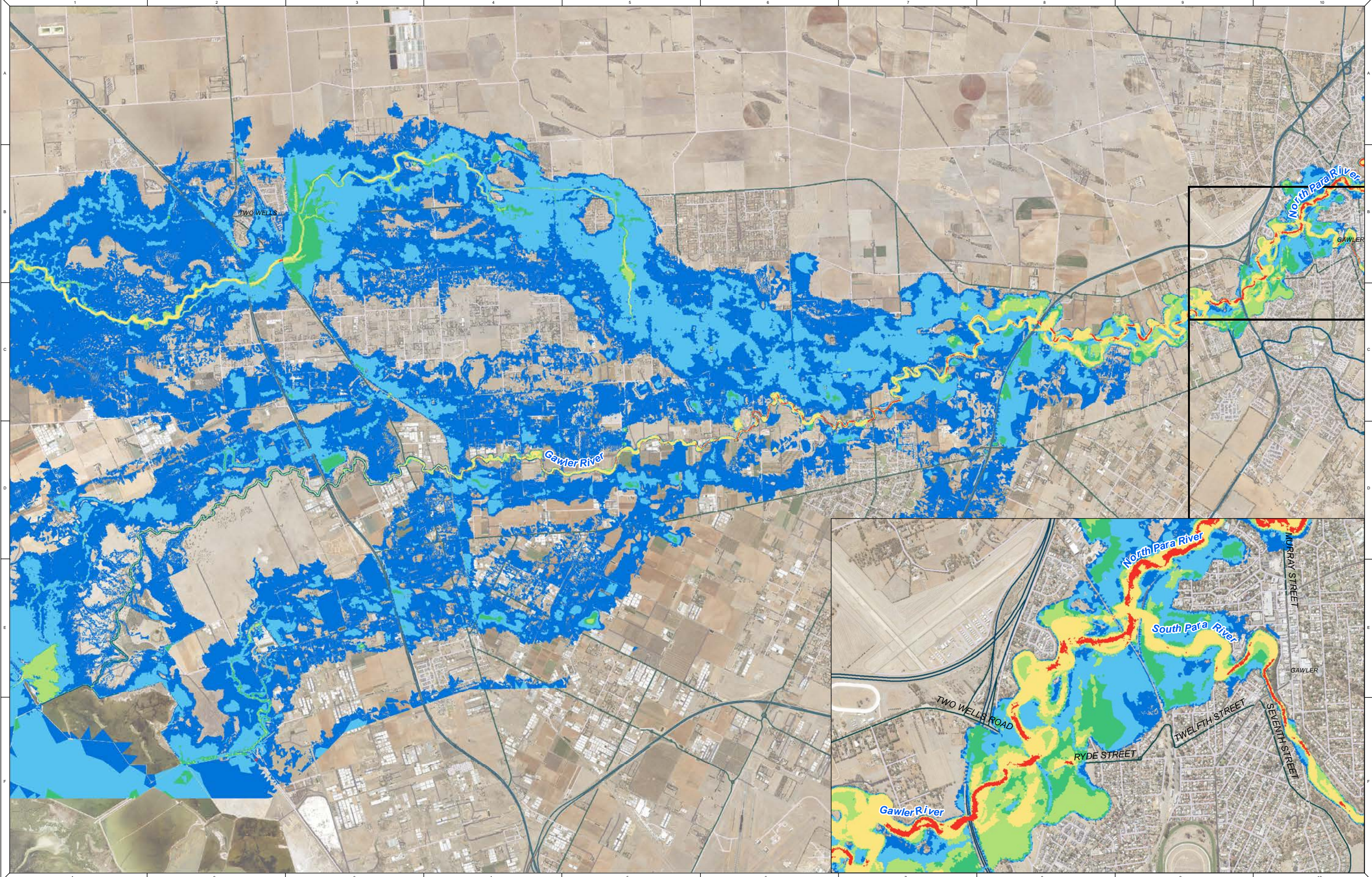

WATER TECHNOLOGY
WATER, COASTAL & ENVIRONMENTAL CONSULTANTS

Gawler River Stormwater Management Plan

Figure B.04: 1% AEP - Base Case - Flood Hazard

REFERENCE: M:\21030183_Gawler River SMP\Spatial\Workspaces\21030183_Gawler River SMP_Results_02J.mxd

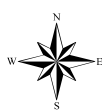
DATE: 2012/03/22



NOTE
Water Technology Pty. Ltd. has prepared this document in accordance
with instruction of GRFMA
for their specific use.

DISCLAIMER
GRFMA and Water Technology
Pty. Ltd. does not warrant that this document is definitive nor free from error and
does not accept liability for any loss caused or arising from reliance upon
information provided herein.

Contains DataSA Information



Hazard Class

■ H1 ■ H2 ■ H3 ■ H4 ■ H5 ■ H6

0 0.75 1.5 3 Kilometers

1:69,500 at A3



Gawler River Stormwater Management Plan

Figure B.05: 1% AEP + CC - Base Case - Flood Hazard

REFERENCE: M:\21030183_Gawler River SMP\Spatial\Workspaces\21030183_Gawler River SMP_Results_02J.mxd

DATE: 2017/02/22

