

NOTE  
Water Technology Pty. Ltd. has prepared this document in accordance  
with instruction of GRFMA  
for their specific use.

DISCLAIMER  
GRFMA and Water Technology  
Pty. Ltd. does not warrant that this document is definitive nor free from error and  
does not accept liability for any loss caused or arising from reliance upon  
information provided herein.

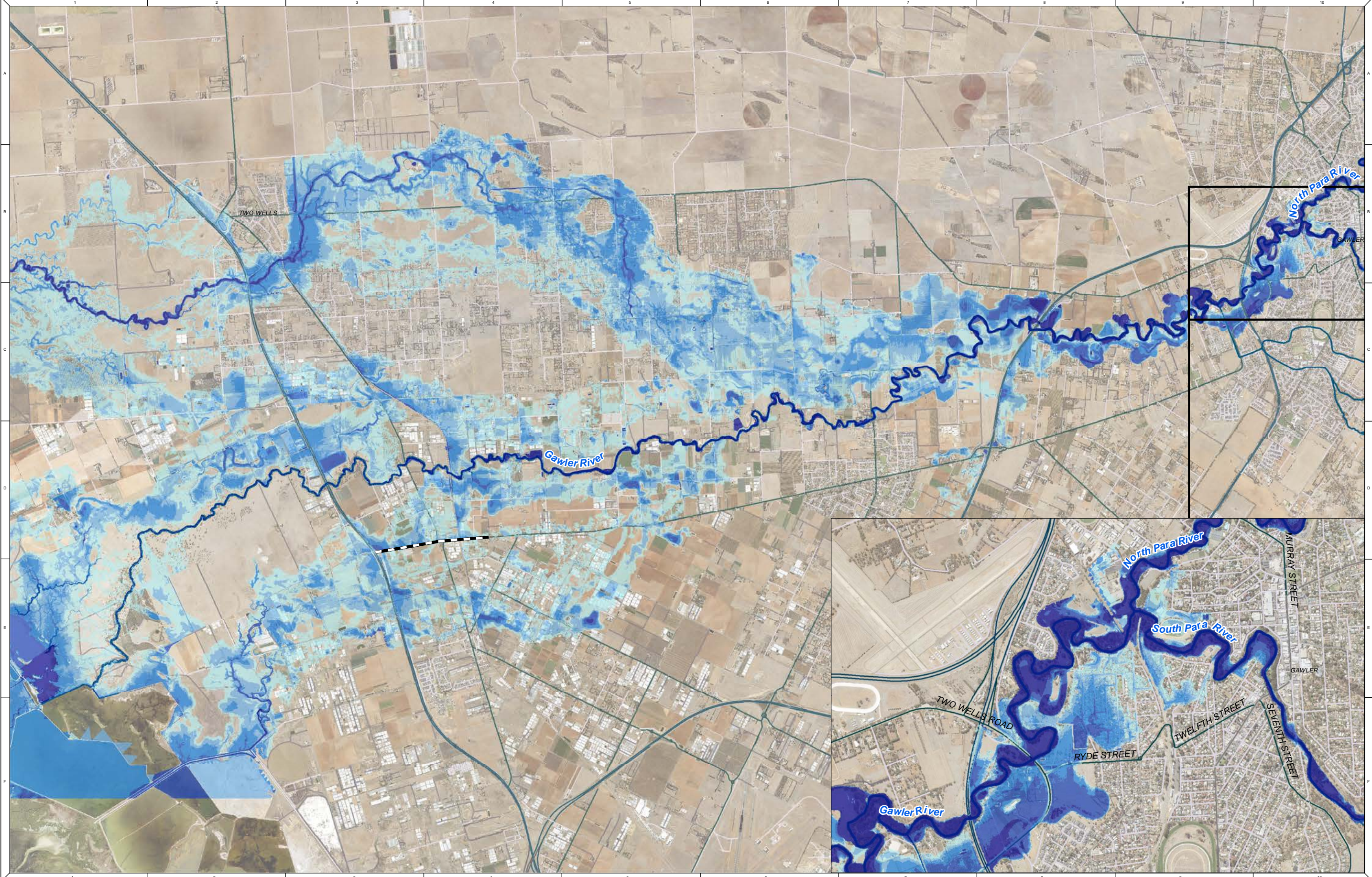
Contains DataSA Information



**Gawler River Stormwater Management Plan**  
**Figure A.18: 5% AEP - Southern Floodway - Flood Depth**

REFERENCE: M:\21030183\_Gawler River SMP\Spatial\Workspaces\21030183\_Gawler\_River\_SMP\_Results\_02J\_Depth.mxd  
DATE: 28/12/2022

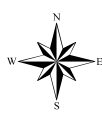




NOTE  
Water Technology Pty. Ltd. has prepared this document in accordance with instruction of GRFMA for their specific use.

DISCLAIMER  
GRFMA and Water Technology Pty. Ltd. does not warrant that this document is definitive nor free from error and does not accept liability for any loss caused or arising from reliance upon information provided herein.

Contains DataSA Information



**Flood Depth (m)**

< 0.25	0.25 - 0.5	0.5 - 1	Proposed Levees
< 0.25	0.25 - 0.5	1 - 2	
< 0.25	0.25 - 0.5	> 2	

0 0.5 1 2 Kilometers



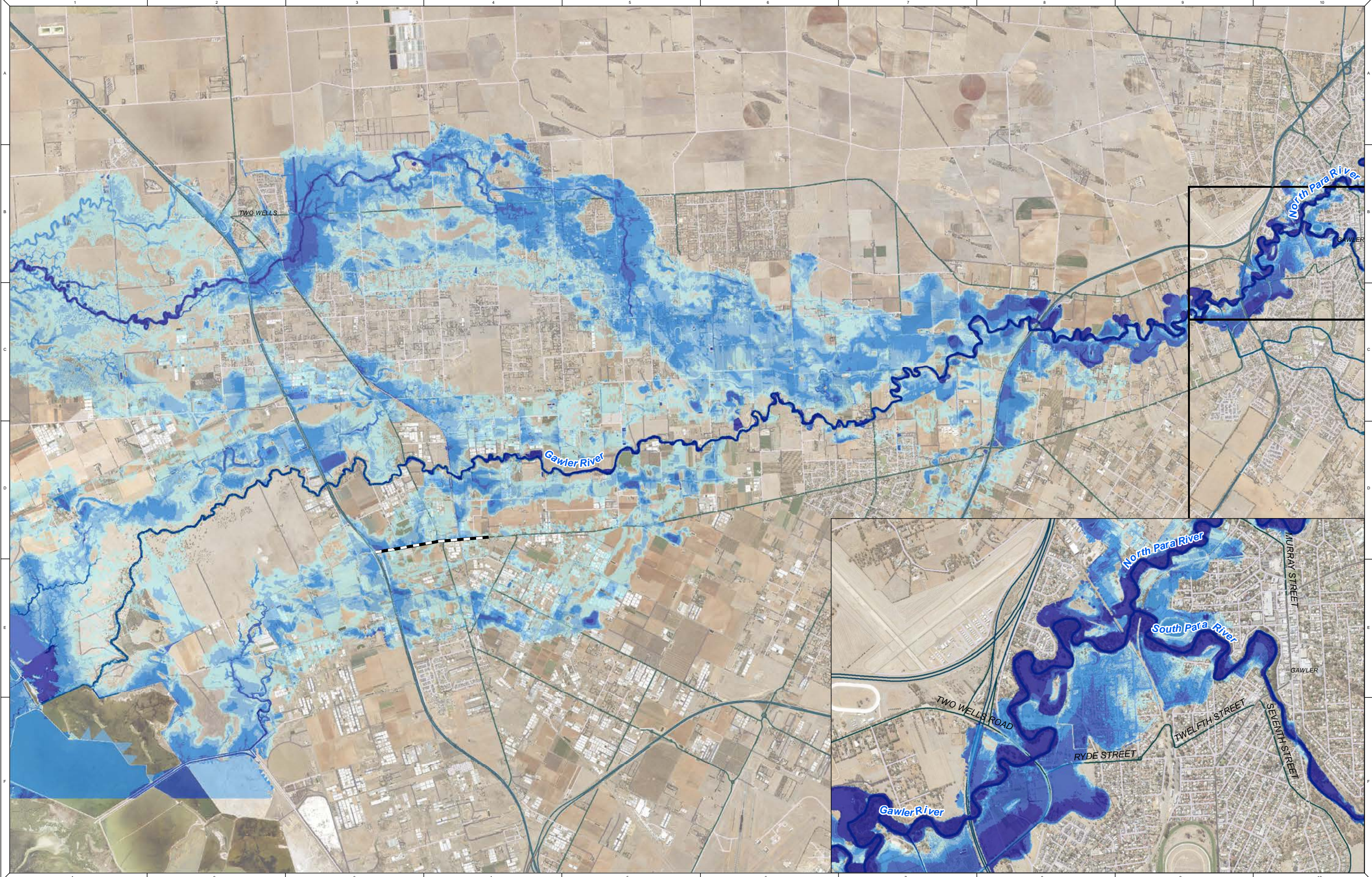
1:69,500 at A3

## Gawler River Stormwater Management Plan

### Figure A.19: 2% AEP - Southern Floodway - Flood Depth

REFERENCE: M:\21030183\_Gawler River SMP\Spatial\Workspaces\21030183\_Gawler River SMP\_Results\_02J\_Depth.mxd  
DATE: 26/12/2022

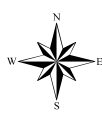




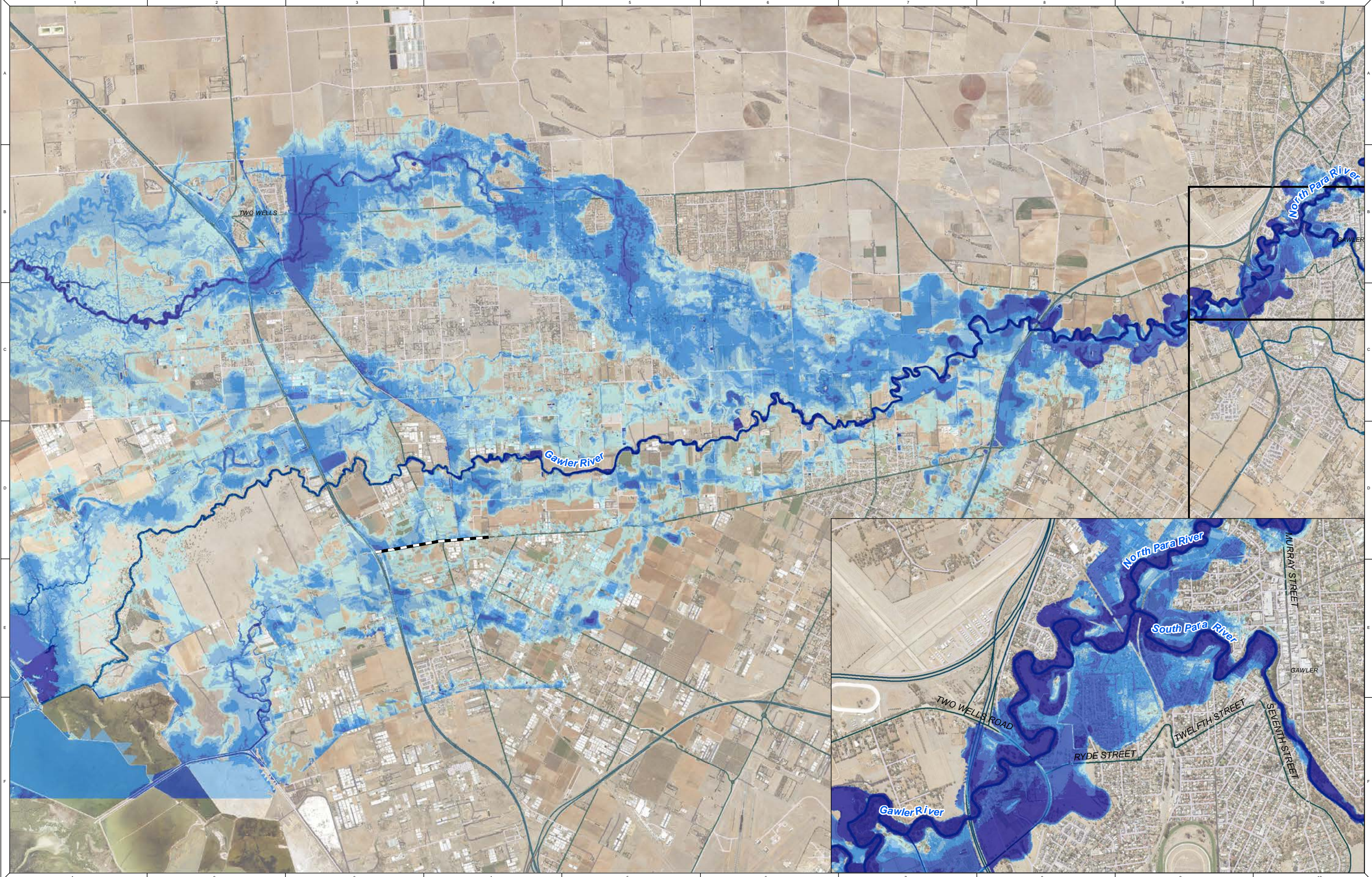
NOTE  
Water Technology Pty. Ltd. has prepared this document in accordance  
with instruction of GRFMA  
for their specific use.

DISCLAIMER  
GRFMA and Water Technology  
Pty. Ltd. does not warrant that this document is definitive nor free from error and  
does not accept liability for any loss caused or arising from reliance upon  
information provided herein.

Contains DataSA Information



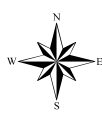




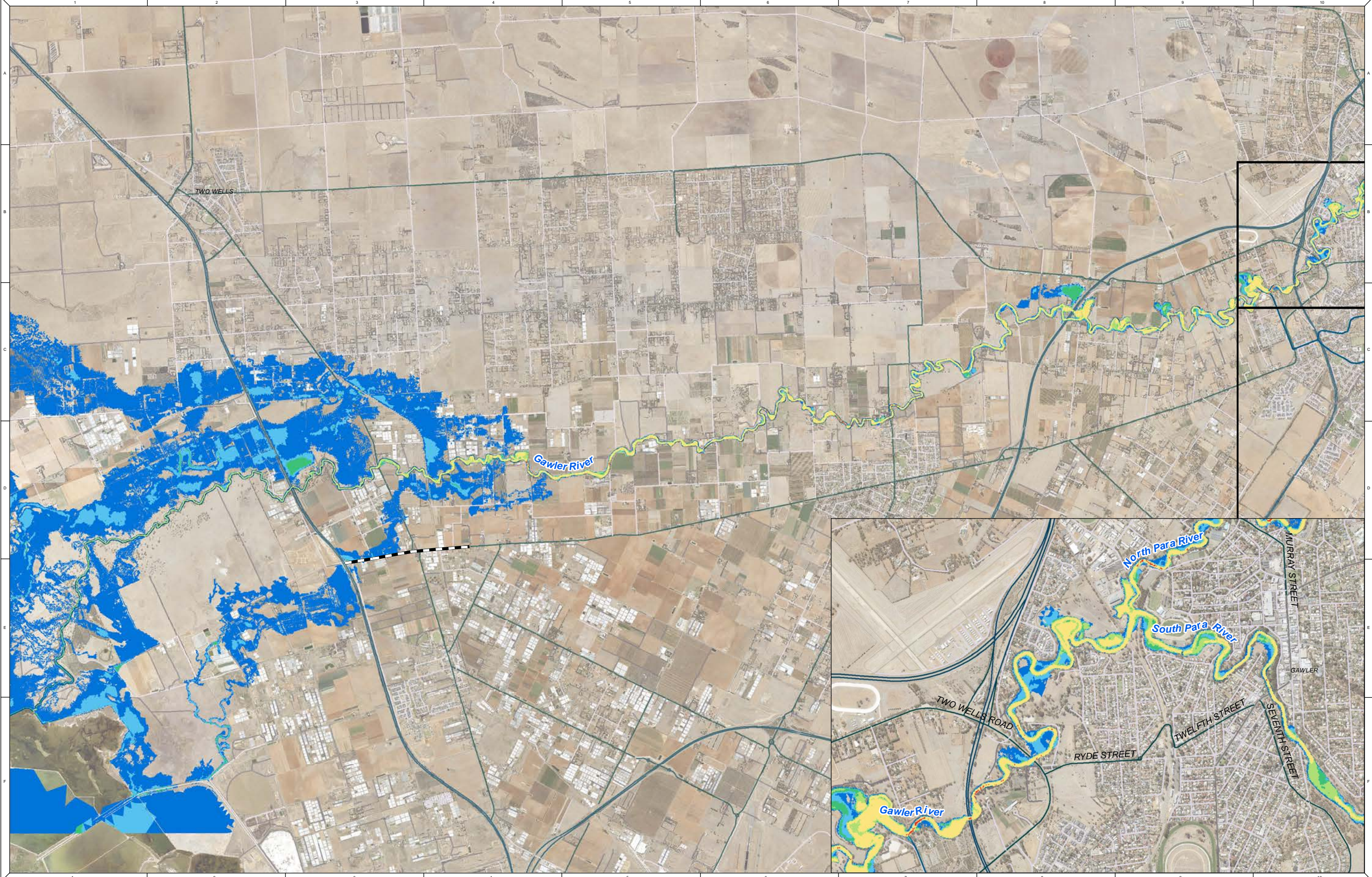
NOTE  
Water Technology Pty. Ltd. has prepared this document in accordance with instruction of GRFMA for their specific use.

DISCLAIMER  
GRFMA and Water Technology Pty. Ltd. does not warrant that this document is definitive nor free from error and does not accept liability for any loss caused or arising from reliance upon information provided herein.

Contains DataSA Information



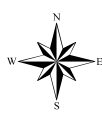




NOTE  
Water Technology Pty. Ltd. has prepared this document in accordance  
with instruction of GRFMA  
for their specific use.

DISCLAIMER  
GRFMA and Water Technology  
Pty. Ltd. does not warrant that this document is definitive nor free from error and  
does not accept liability for any loss caused or arising from reliance upon  
information provided herein.

Contains DataSA Information



**Hazard Class**

■ H1 ■ H2 ■ H3 ■ H4 ■ H5 ■ H6 — Proposed Levees

0 0.5 1 2  
Kilometers

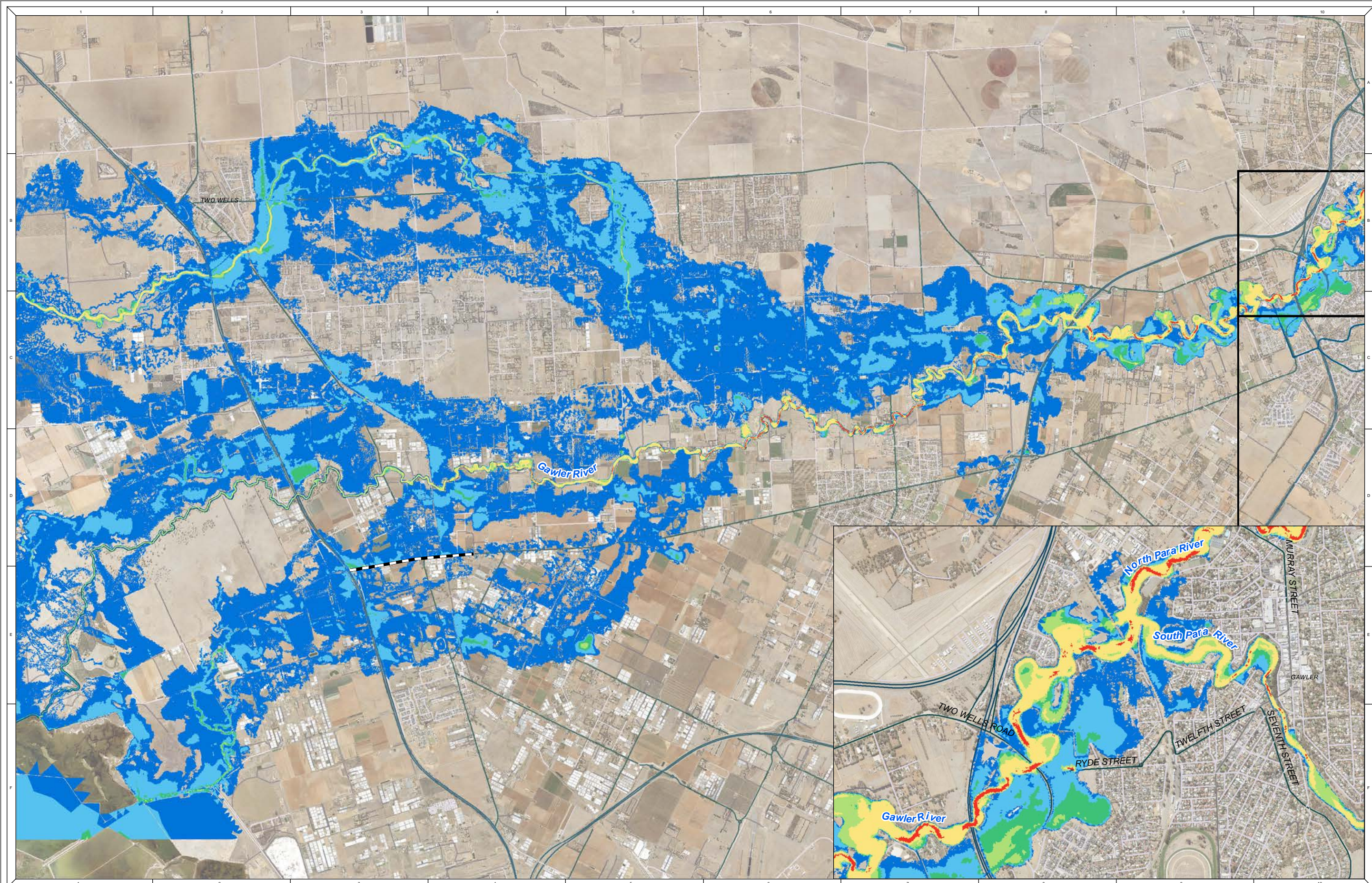
1:63,360 at A3



**Gawler River Stormwater Management Plan**  
**Figure B.18: 5% AEP - Southern Floodway - Flood Hazard**

REFERENCE: M:\21030183\_Gawler River SMP\Spatial\Workspaces\21030183\_Gawler\_River\_SMP\_Results\_02J.mxd  
DATE: 28/12/2022





NOTE  
Water Technology Pty. Ltd. has prepared this document in accordance with instruction of GRFMA for their specific use.

DISCLAIMER  
GRFMA and Water Technology Pty. Ltd. does not warrant that this document is definitive nor free from error and does not accept liability for any loss caused or arising from reliance upon information provided herein.

Contains DataSA Information

**Hazard Class**

■ H1 ■ H2 ■ H3 ■ H4 ■ H5 ■ H6 — Proposed Levees

0 0.5 1 2 Kilometers

WATER TECHNOLOGY  
WATER, COASTAL & ENVIRONMENTAL CONSULTANTS

1:63,360 at A3

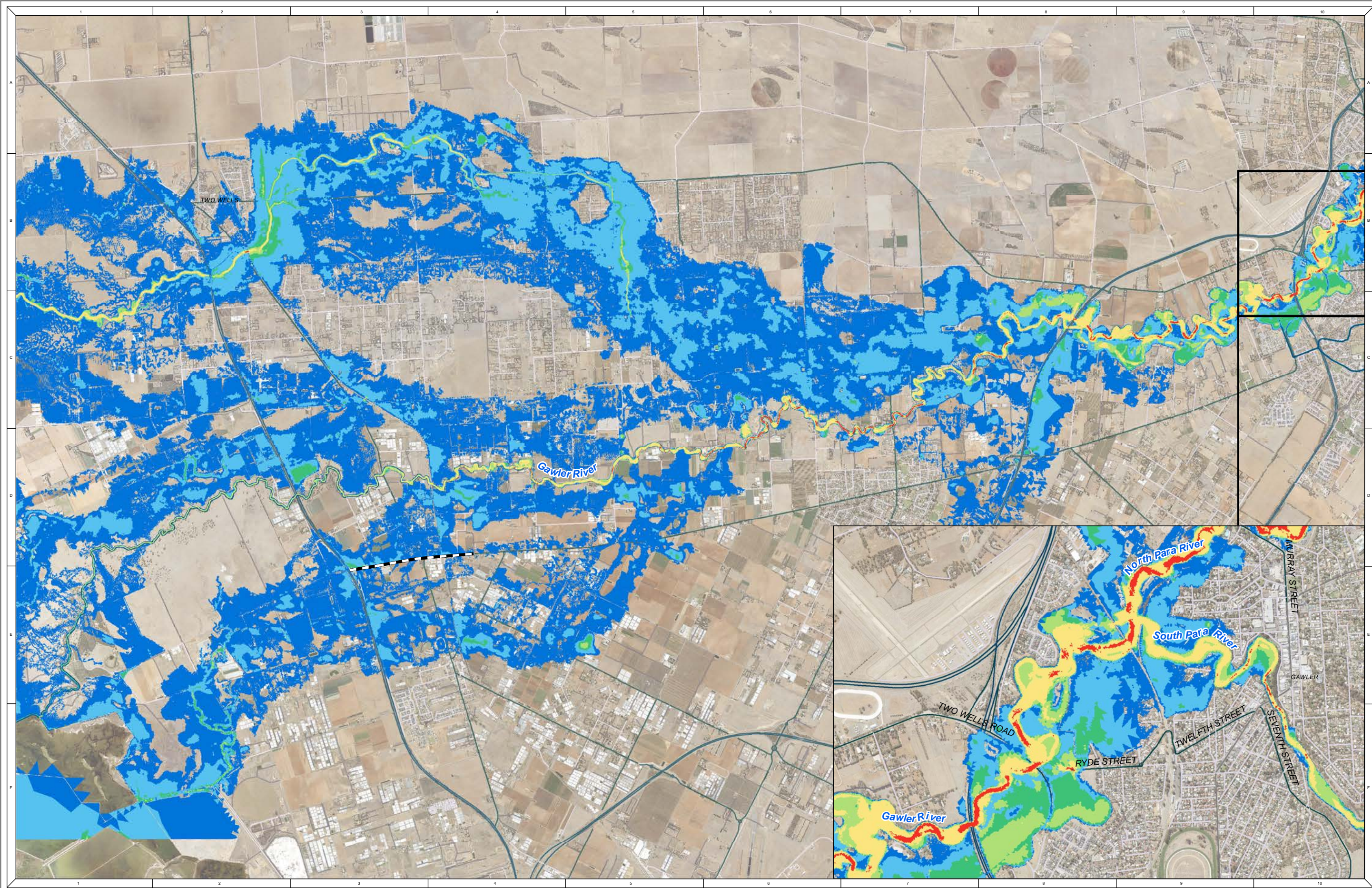
**Gawler River Stormwater Management Plan**

**Figure B.19: 2% AEP - Southern Floodway - Flood Hazard**

REFERENCE: M:\21030183\_Gawler River SMP\Spatial\Workspaces\21030183\_Gawler River SMP\_Results\_02J.mxd

DATE: 26/12/2022





NOTE  
Water Technology Pty. Ltd. has prepared this document in accordance  
with instruction of GRFMA  
for their specific use.

DISCLAIMER  
GRFMA and Water Technology  
Pty. Ltd. does not warrant that this document is definitive nor free from error and  
does not accept liability for any loss caused or arising from reliance upon  
information provided herein.

Contains DataSA Information

**Hazard Class**

■ H1 ■ H2 ■ H3 ■ H4 ■ H5 ■ H6 — Proposed Levees

0 0.5 1 2  
Kilometers

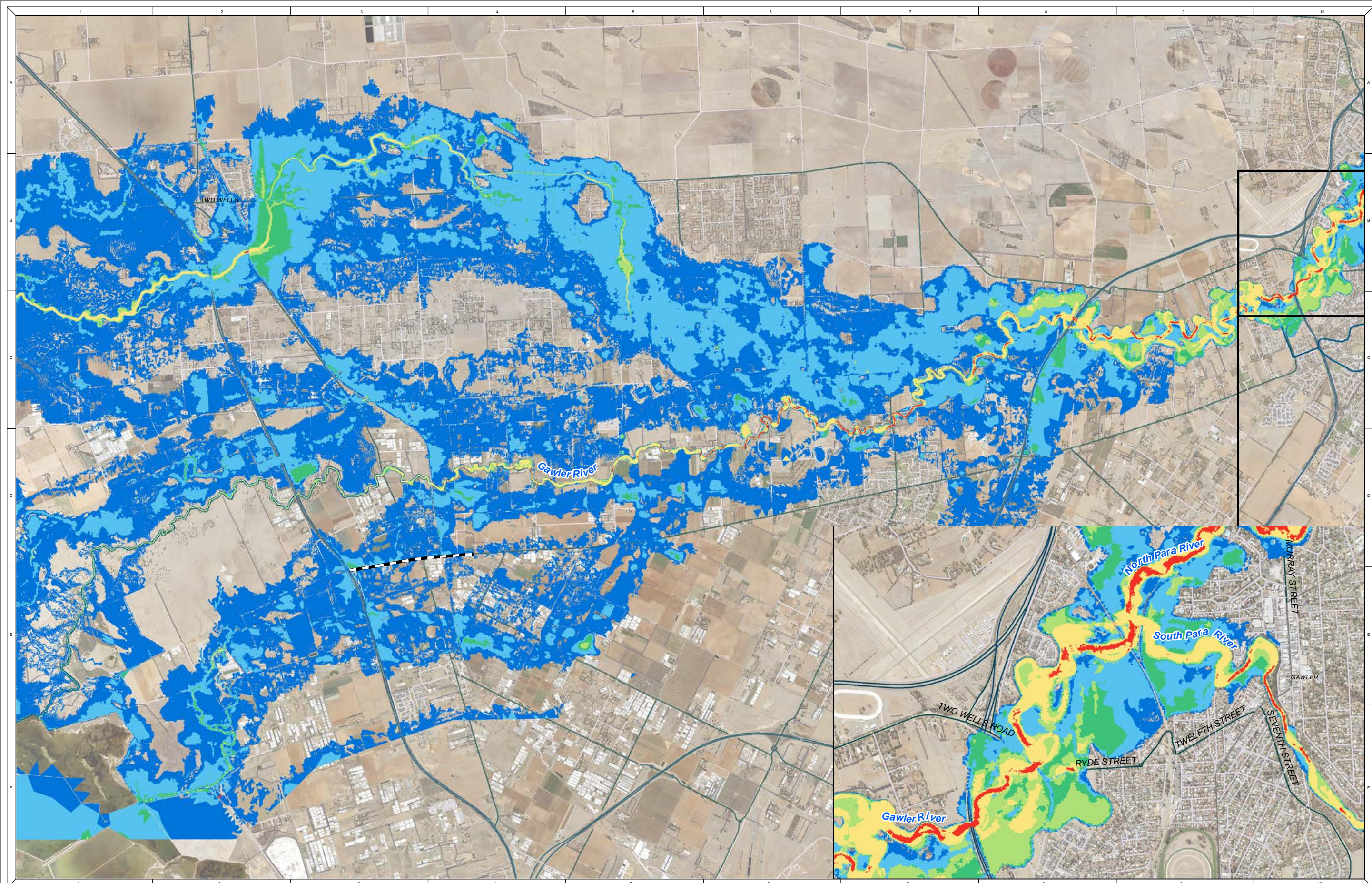
1:63,360 at A3

  
WATER TECHNOLOGY  
WATER, COASTAL & ENVIRONMENTAL CONSULTANTS

**Gawler River Stormwater Management Plan**  
**Figure B.20: 1% AEP - Southern Floodway - Flood Hazard**

REFERENCE: M:\21030183\_Gawler River SMP\Spatial\Workspaces\21030183\_Gawler\_River\_SMP\_Results\_02J.mxd  
DATE: 26/12/2022

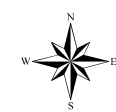




NOTE  
Water Technology Pty. Ltd. has prepared this document in accordance  
with instruction of GRFMA  
for their specific use.

DISCLAIMER  
GRFMA and Water Technology  
Pty. Ltd. does not warrant that this document is definitive nor free from error and  
does not accept liability for any loss caused or arising from reliance upon  
information provided herein.

Contains DataSA Information



**Hazard Class**

■ H1 ■ H2 ■ H3 ■ H4 ■ H5 ■ H6 — Proposed Levees

0 0.5 1 2 Kilometers



1:63,360 at A3

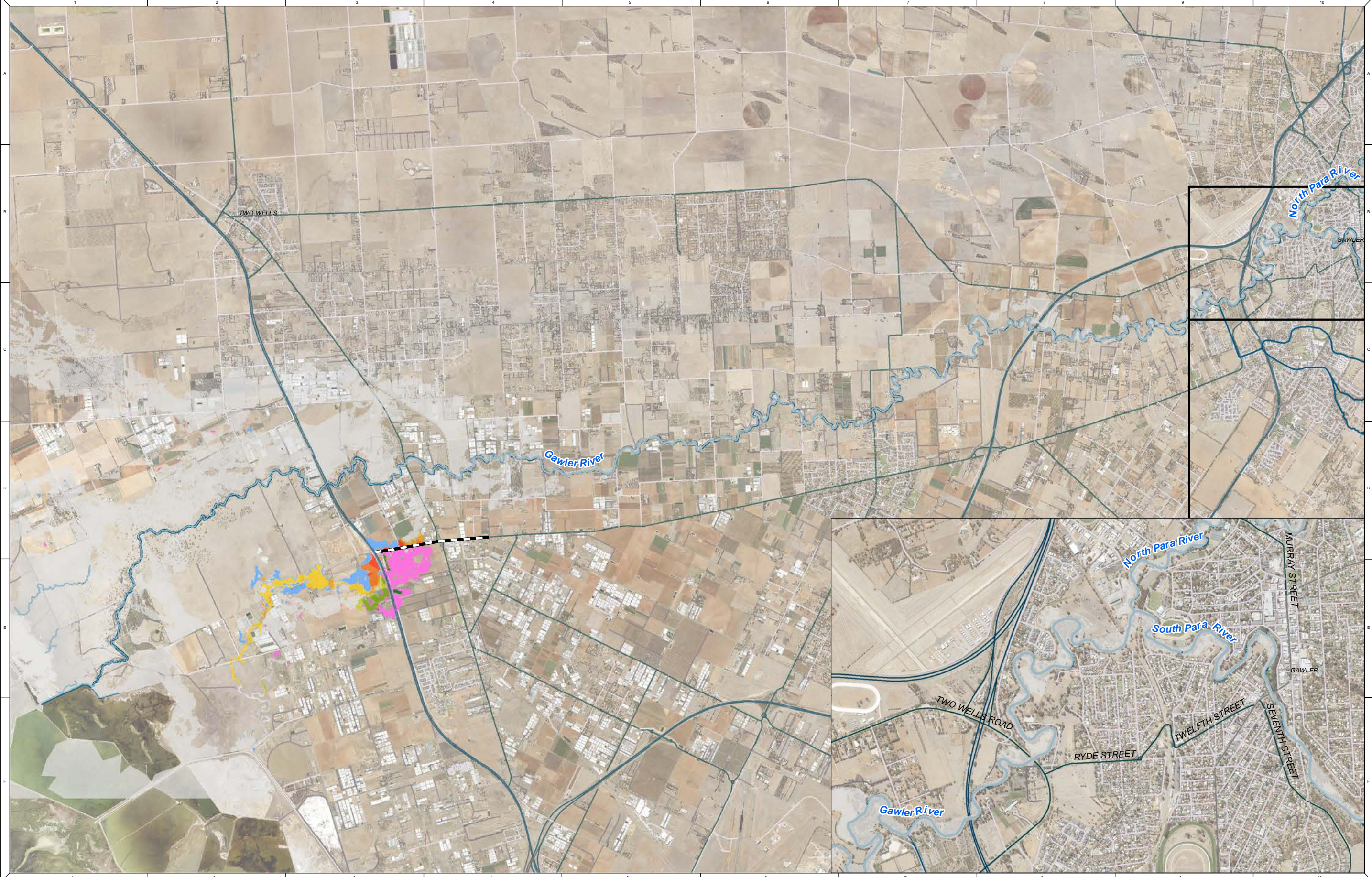
**Gawler River Stormwater Management Plan**

Figure B.21: 1% AEP + CC - Southern Floodway - Flood Hazard

REFERENCE: M:\21030183\_Gawler River SMP\Spatial\Workspaces\21030183\_Gawler River SMP\_Results\_02J.mxd

DATE: 26/12/2022





NOTE  
Water Technology Pty. Ltd. has prepared this document in accordance with instruction of GRFMA for their specific use.

DISCLAIMER  
GRFMA and Water Technology Pty. Ltd. does not warrant that this document is definitive nor free from error and does not accept liability for any loss caused or arising from reliance upon information provided herein.

Contains DataSA Information



**Change in Flood Levels (m)**

More than 0.20m Lower	-0.05 to -0.02	0.10 - 0.20
-0.20 to -0.10	No Change (+/- 0.02)	More than 0.20m Higher
-0.10 to -0.05	0.02 - 0.05	Was Dry, Now Wet
	0.05 - 0.10	Was Wet, Now Dry

0 0.75 1.5 3 Kilometers

— Proposed Levees



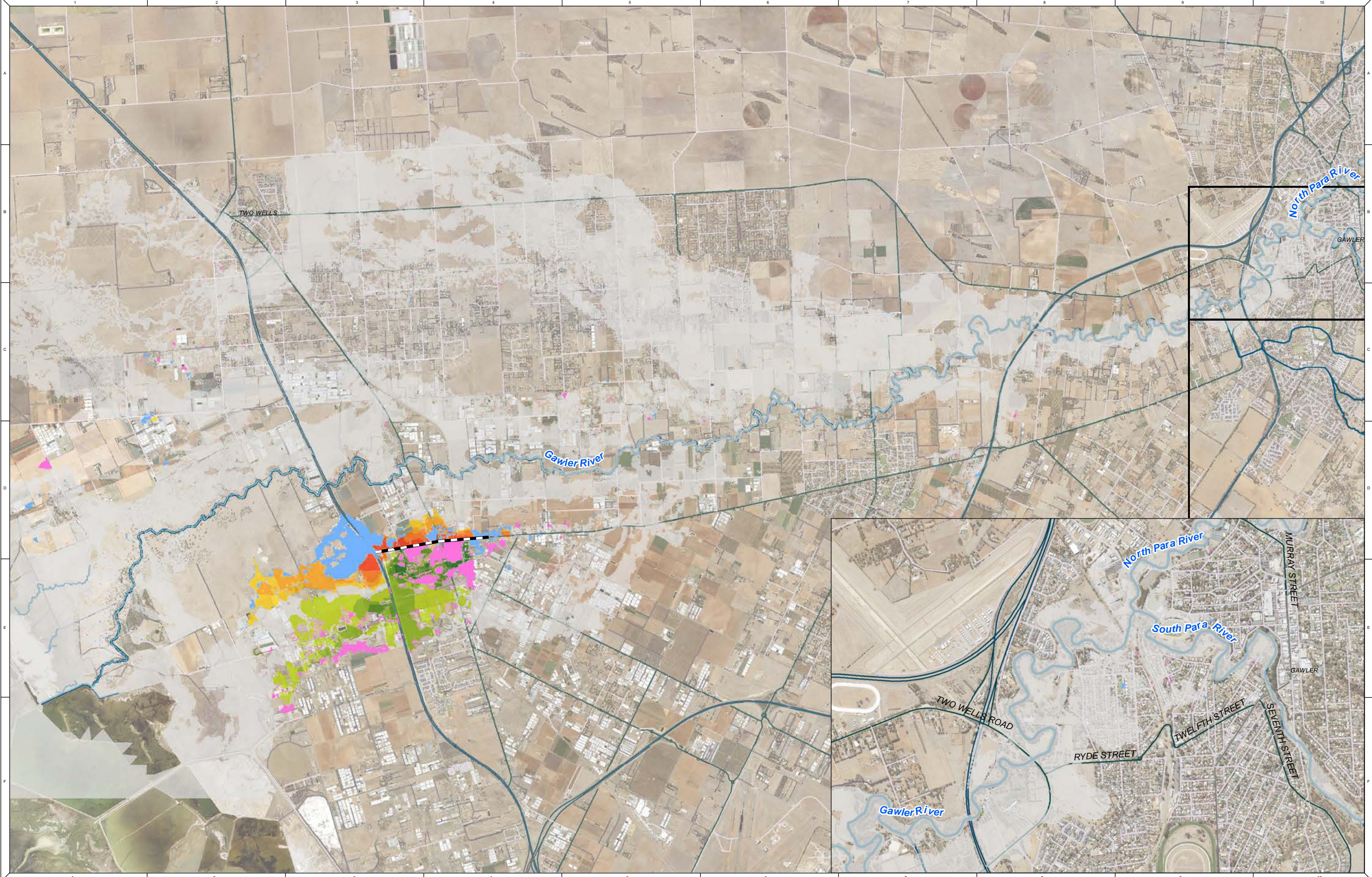
**Gawler River Stormwater Management Plan**

**Figure C.12: 5% AEP - Southern Floodway - Flood Difference**

REFERENCE: M121030183\_Gawler River SMP\Spatial\Workspaces\21030183\_Gawler\_River\_SMP\_Results\_02J\_Difference.mxd

DATE: 30/1/2023





NOTE  
Water Technology Pty. Ltd. has prepared this document in accordance with instruction of GRFMA for their specific use.

DISCLAIMER  
GRFMA and Water Technology Pty. Ltd. does not warrant that this document is definitive nor free from error and does not accept liability for any loss caused or arising from reliance upon information provided herein.

Contains DataSA Information



**Change in Flood Levels (m)**

More than 0.20m Lower	-0.05 to -0.02	0.10 - 0.20
-0.20 to -0.10	No Change (+/- 0.02)	More than 0.20m Higher
-0.10 to -0.05	0.02 - 0.05	Was Dry, Now Wet
	0.05 - 0.10	Was Wet, Now Dry

0 0.75 1.5 3 Kilometers

Proposed Levees

1:69,500 at A3



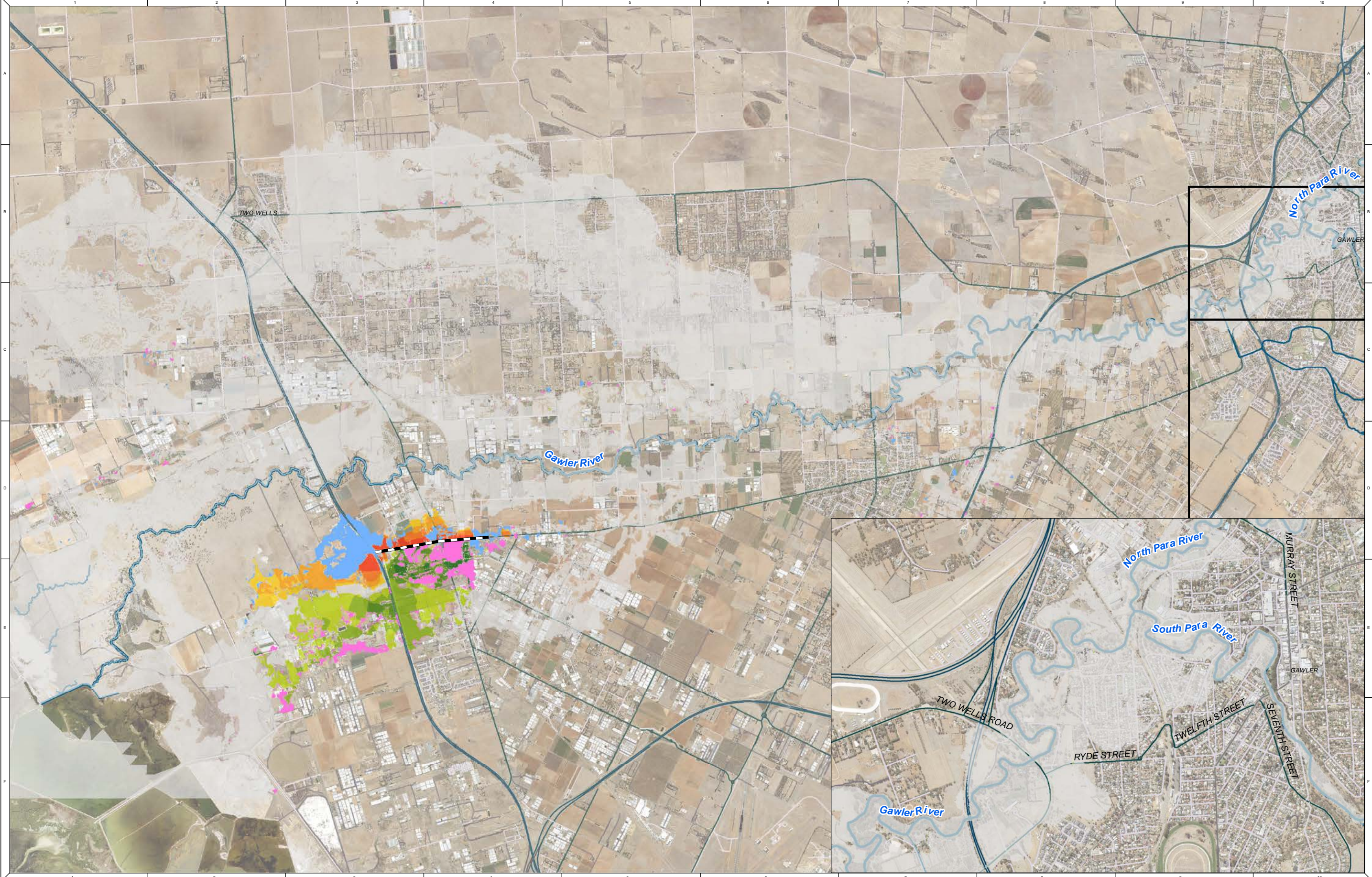
**Gawler River Stormwater Management Plan**

**Figure C.13: 2% AEP - Southern Floodway - Flood Difference**

REFERENCE: M:\21030183\_Gawler River SMP\Spatial\Workspaces\21030183\_Gawler\_River\_SMP\_Results\_02J\_Difference.mxd

DATE: 30/1/2023





NOTE  
Water Technology Pty. Ltd. has prepared this document in accordance with instruction of GRFMA and Water Technology Pty. Ltd. does not warrant that this document is definitive nor free from error and does not accept liability for any loss caused or arising from reliance upon information provided herein.

DISCLAIMER  
GRFMA and Water Technology Pty. Ltd. does not warrant that this document is definitive nor free from error and does not accept liability for any loss caused or arising from reliance upon information provided herein.

Contains DataSA Information



**Change in Flood Levels (m)**

More than 0.20m Lower	-0.05 to -0.02	0.10 - 0.20
-0.20 to -0.10	No Change (+/- 0.02)	More than 0.20m Higher
-0.10 to -0.05	0.02 - 0.05	Was Dry, Now Wet
	0.05 - 0.10	Was Wet, Now Dry

0 0.75 1.5 3 Kilometers

Proposed Levees



1:69,500 at A3

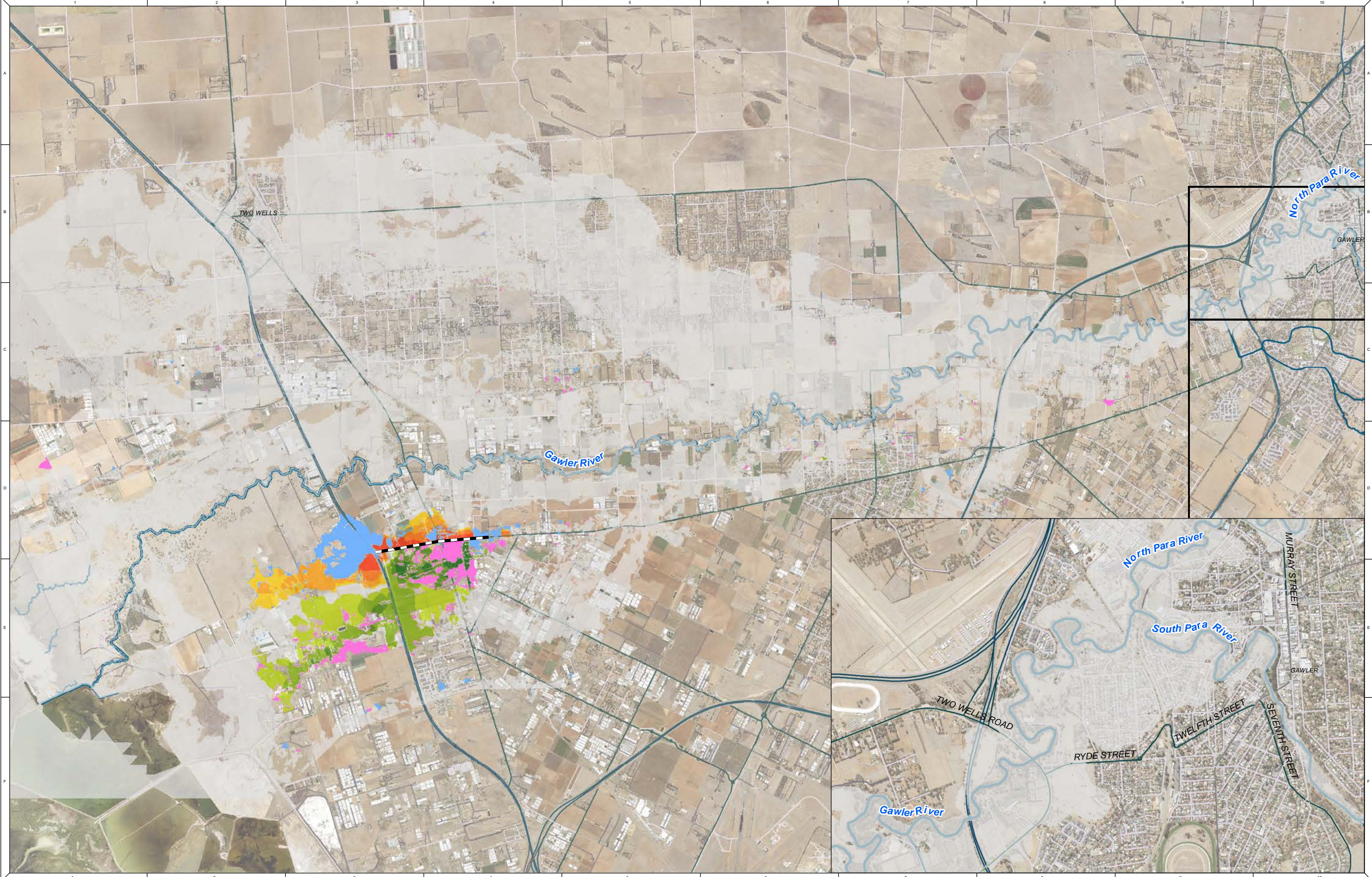
**Gawler River Stormwater Management Plan**

**Figure C.14: 1% AEP - Southern Floodway - Flood Difference**

REFERENCE: M:\21030183\_Gawler River SMP\Spatial\Workspaces\21030183\_Gawler\_River\_SMP\_Results\_02J\_Difference.mxd

DATE: 30/1/2023

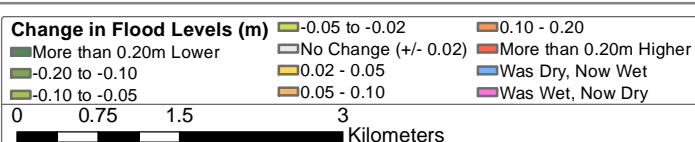




NOTE  
Water Technology Pty. Ltd. has prepared this document in accordance with instruction of GRFMA for their specific use.

DISCLAIMER  
GRFMA and Water Technology Pty. Ltd. does not warrant that this document is definitive nor free from error and does not accept liability for any loss caused or arising from reliance upon information provided herein.

Contains DataSA Information



Proposed Levees



1:69,500 at A3

**Gawler River Stormwater Management Plan**

Figure C.15: 1% AEP + CC - Southern Floodway - Flood Difference

REFERENCE: M:\21030183\_Gawler River SMP\Spatial\Workspaces\21030183\_Gawler\_River\_SMP\_Results\_02J\_Difference.mxd

DATE: 30/1/2023