

NOTE
Water Technology Pty. Ltd. has prepared this document in accordance
with instruction of GRFMA
for their specific use.

DISCLAIMER
GRFMA and Water Technology
Pty. Ltd. does not warrant that this document is definitive nor free from error and
does not accept liability for any loss caused or arising from reliance upon
information provided herein.

Contains DataSA Information



Proposed Levees

< 0.25

0.25 - 0.5

0.5 - 1

1 - 2

> 2

0

0.5

1

2

Kilometers

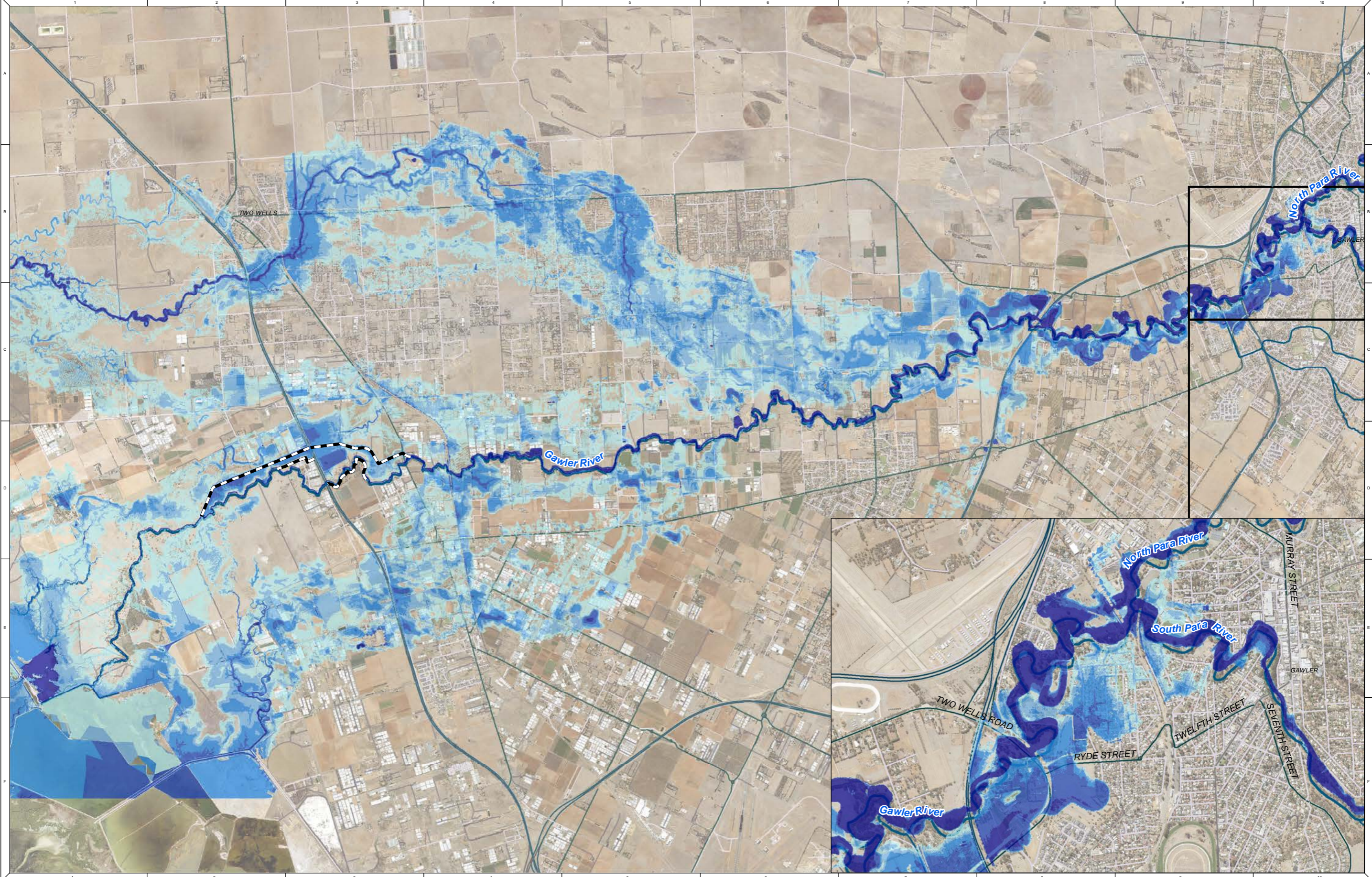
Gawler River Stormwater Management Plan

Figure A.14: 5% AEP - Northern Floodway - Flood Depth

REFERENCE: M:\21030183_Gawler River SMP\Spatial\Workspaces\21030183_Gawler_River_SMP_Results_02J.mxd

DATE: 28/12/2022

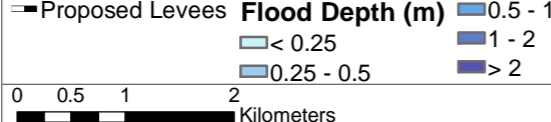
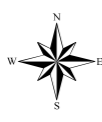
1:69,500 at A3



NOTE
Water Technology Pty. Ltd. has prepared this document in accordance
with instruction of GRFMA
for their specific use.

DISCLAIMER
GRFMA and Water Technology
Pty. Ltd. does not warrant that this document is definitive nor free from error and
does not accept liability for any loss caused or arising from reliance upon
information provided herein.

Contains DataSA Information

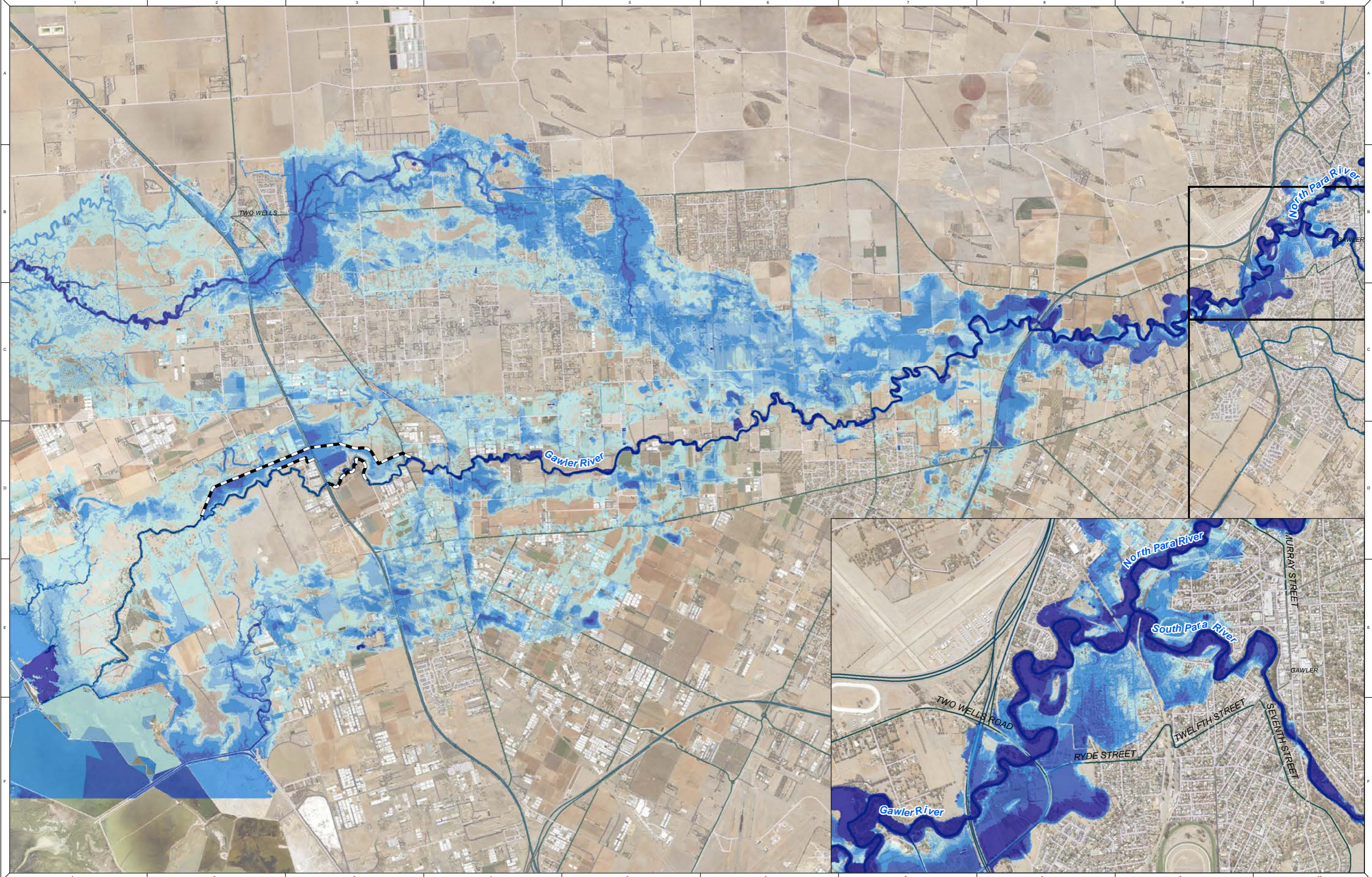


1:69,500 at A3

Gawler River Stormwater Management Plan

Figure A.15: 2% AEP - Northern Floodway - Flood Depth

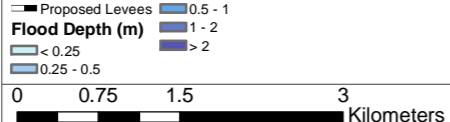
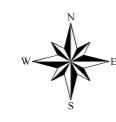
REFERENCE: M:\21030183_Gawler River SMP\Spatial\Workspaces\21030183_Gawler River SMP_Results_02J.mxd
DATE: 26/12/2022

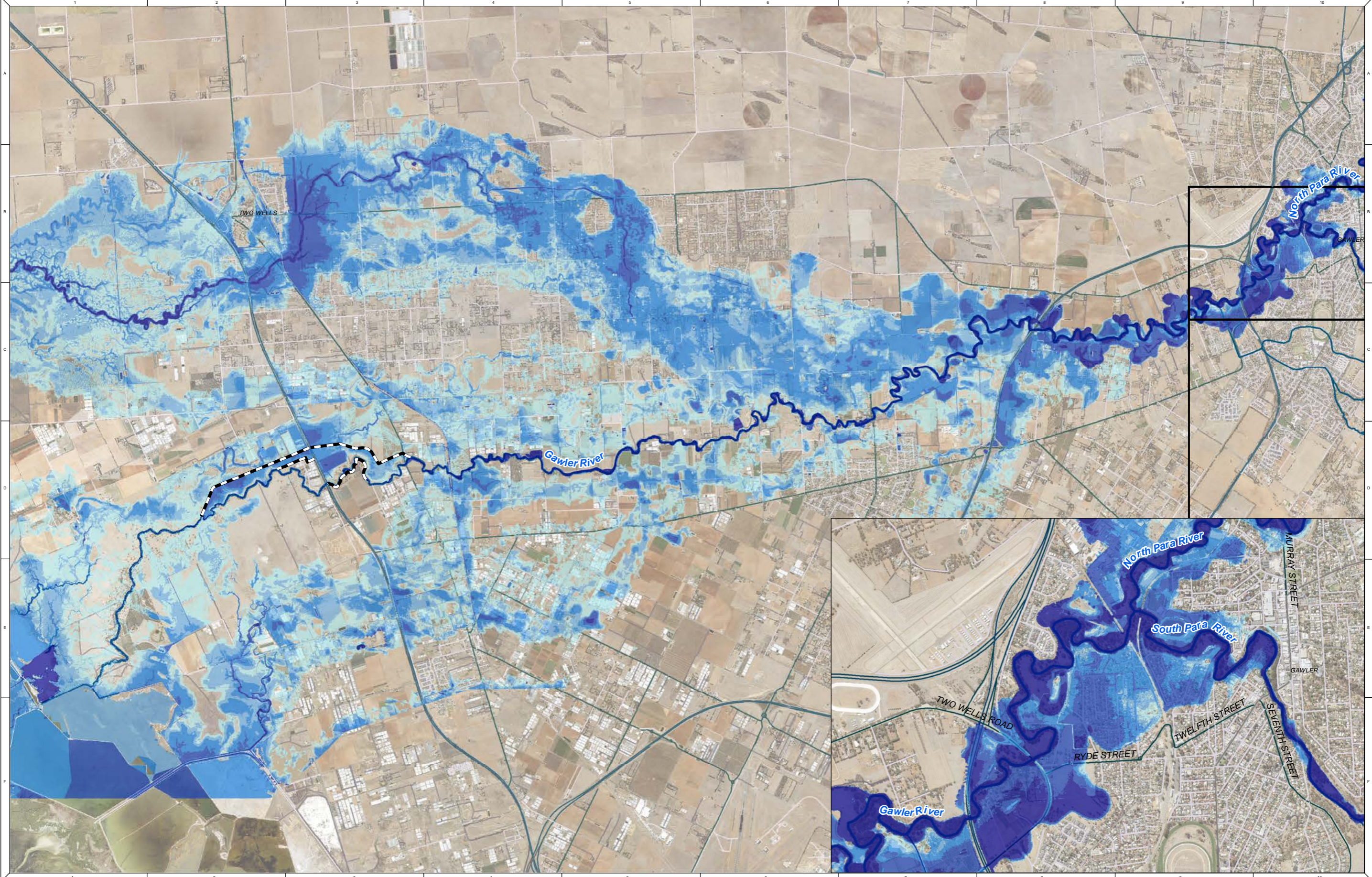


NOTE
Water Technology Pty. Ltd. has prepared this document in accordance with instruction of GRFMA for their specific use.

DISCLAIMER
GRFMA and Water Technology Pty. Ltd. does not warrant that this document is definitive nor free from error and does not accept liability for any loss caused or arising from reliance upon information provided herein.

Contains DataSA Information

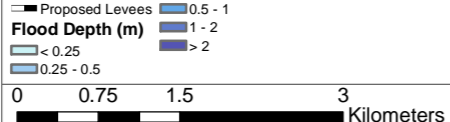
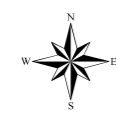


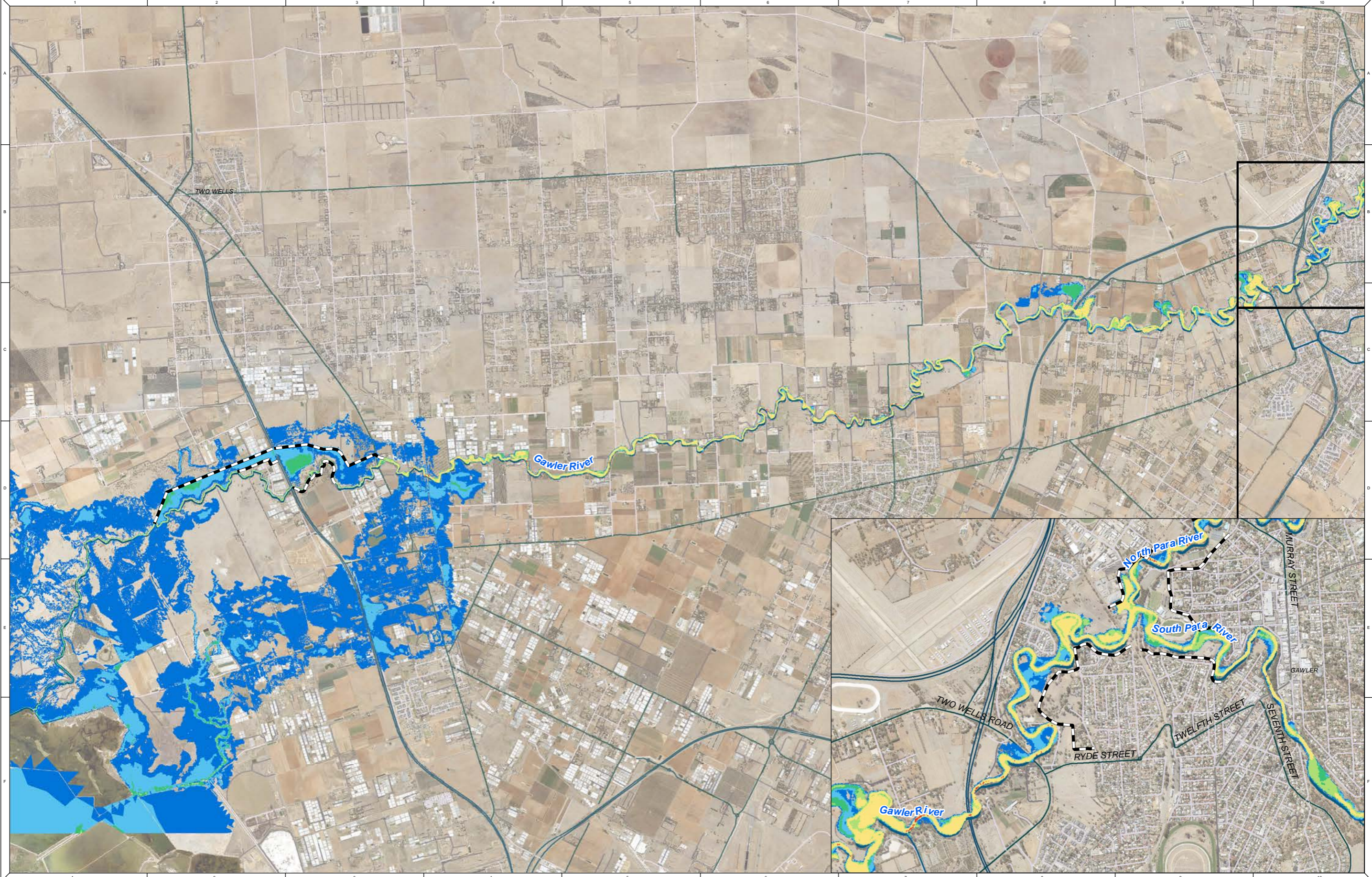


NOTE
Water Technology Pty. Ltd. has prepared this document in accordance with instruction of GRFMA for their specific use.

DISCLAIMER
GRFMA and Water Technology Pty. Ltd. does not warrant that this document is definitive nor free from error and does not accept liability for any loss caused or arising from reliance upon information provided herein.

Contains DataSA Information

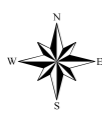




NOTE
Water Technology Pty. Ltd. has prepared this document in accordance with instruction of GRFMA for their specific use.

DISCLAIMER
GRFMA and Water Technology Pty. Ltd. does not warrant that this document is definitive nor free from error and does not accept liability for any loss caused or arising from reliance upon information provided herein.

Contains DataSA Information



Hazard Class

H1	H2	H3	H4	H5	H6	Proposed Levees
----	----	----	----	----	----	-----------------

0 0.5 1 2 Kilometers

1:63,360 at A3

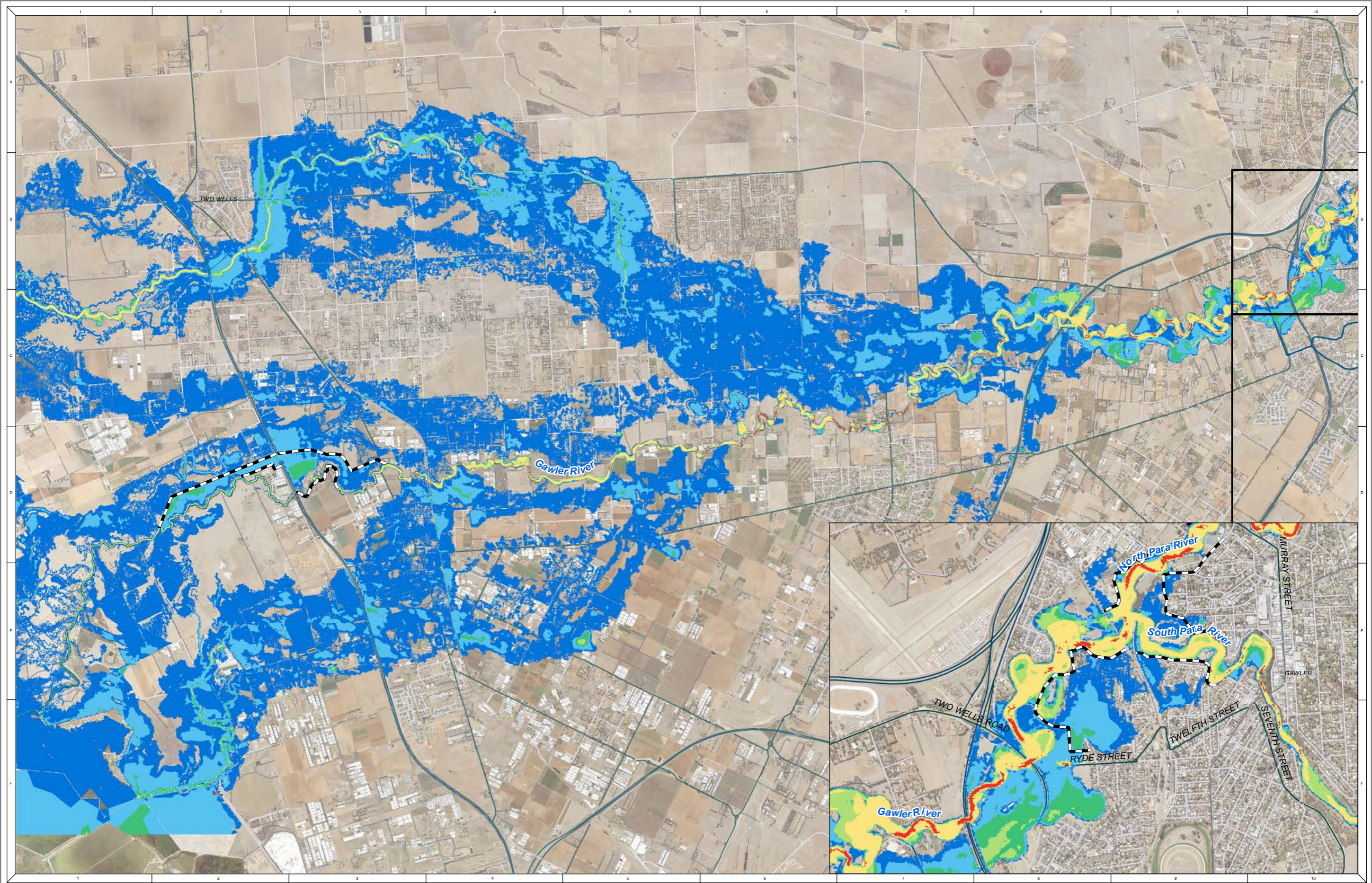


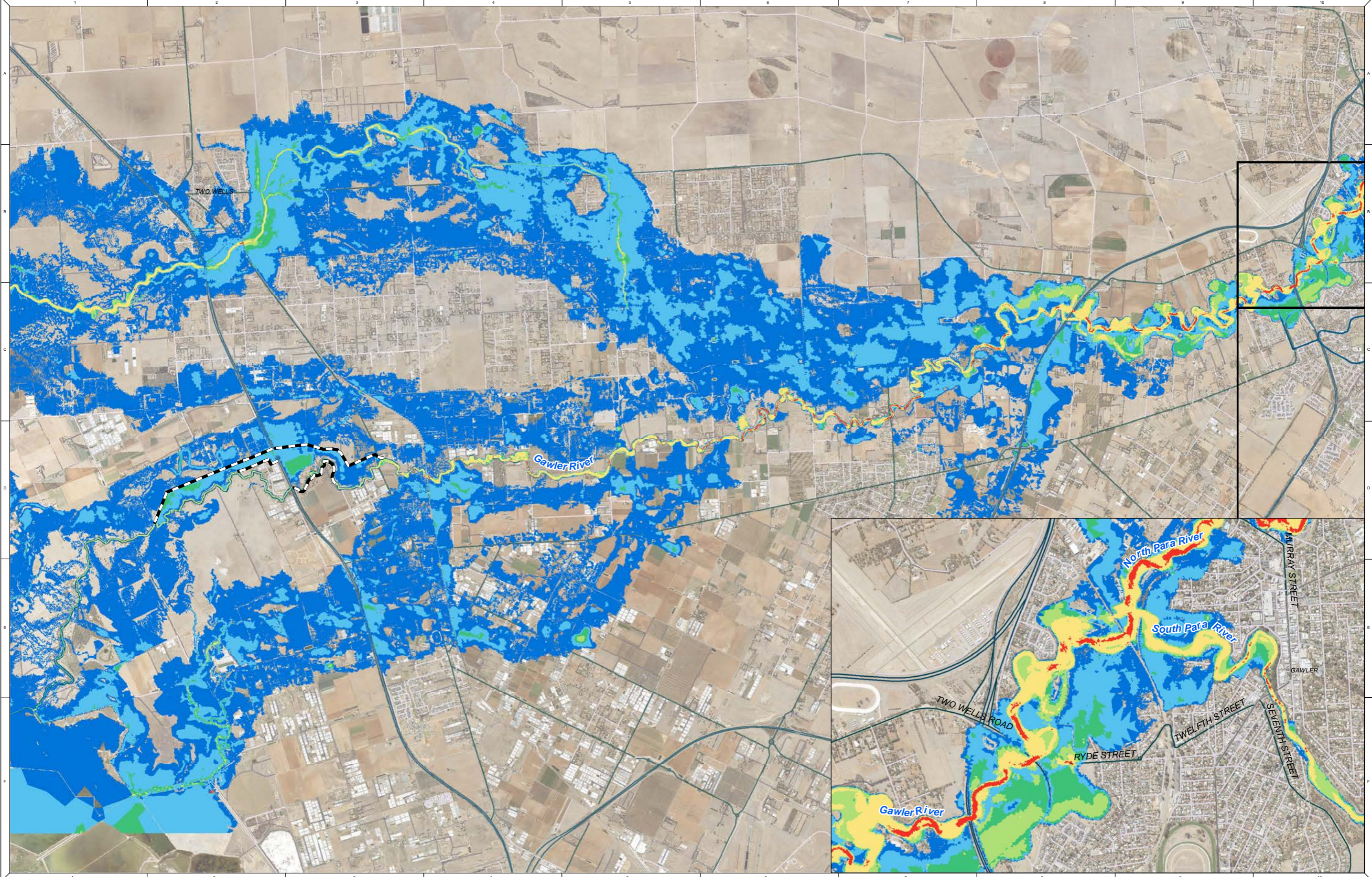
Gawler River Stormwater Management Plan

Figure B.14: 5% AEP - Northern Floodway - Flood Hazard

REFERENCE: M:\21030183_Gawler River SMP\Spatial\Workspaces\21030183_Gawler_River_SMP_Results_02J.mxd

DATE: 2017/02/02

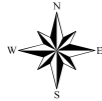




NOTE
Water Technology Pty. Ltd. has prepared this document in accordance with instruction of GRFMA for their specific use.

DISCLAIMER
GRFMA and Water Technology Pty. Ltd. does not warrant that this document is definitive nor free from error and does not accept liability for any loss caused or arising from reliance upon information provided herein.

Contains DataSA Information



Hazard Class

■ H1 ■ H2 ■ H3 ■ H4 ■ H5 ■ H6 — Proposed Levees

0 0.5 1 2 Kilometers

1:63,360 at A3

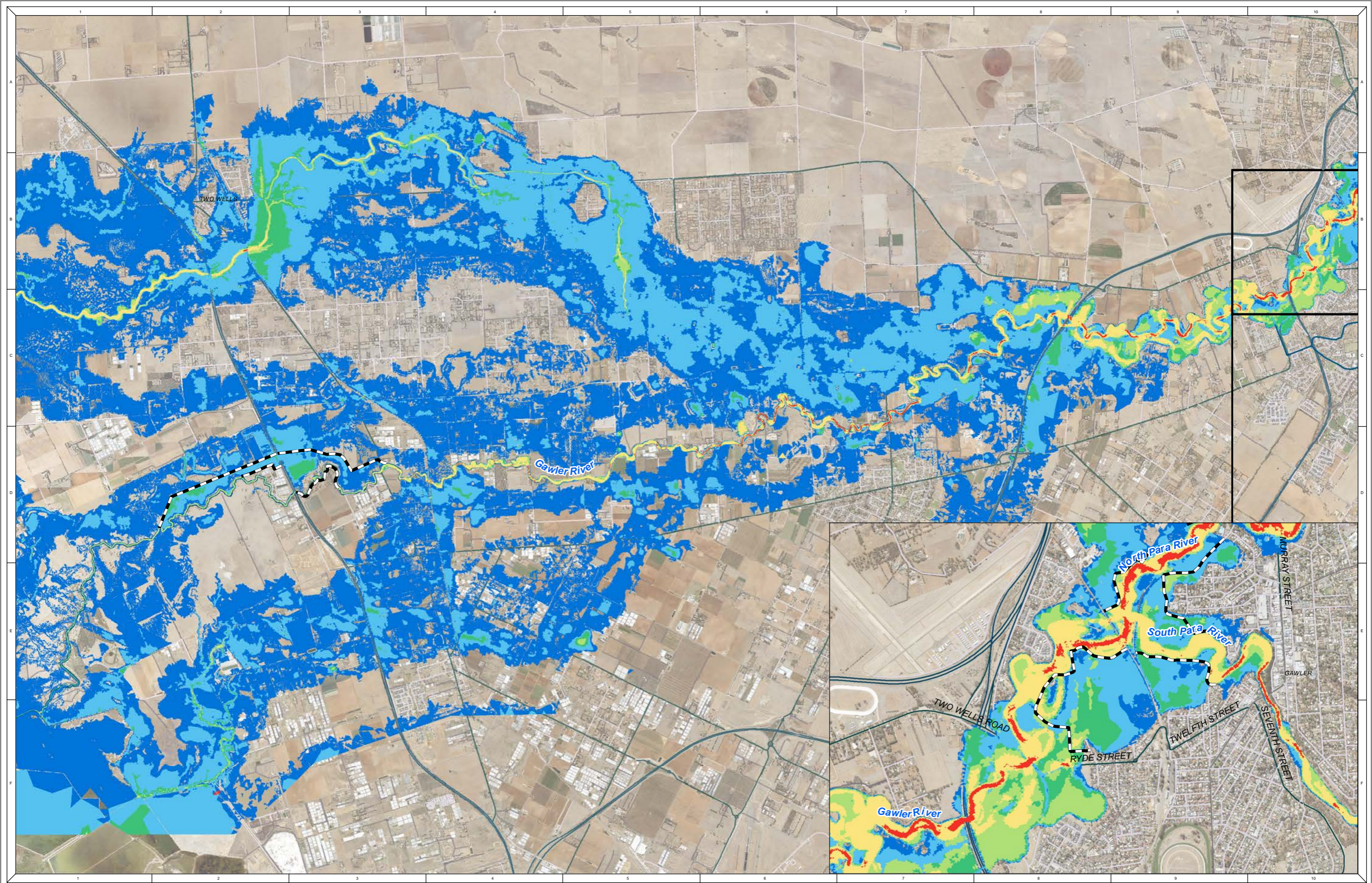


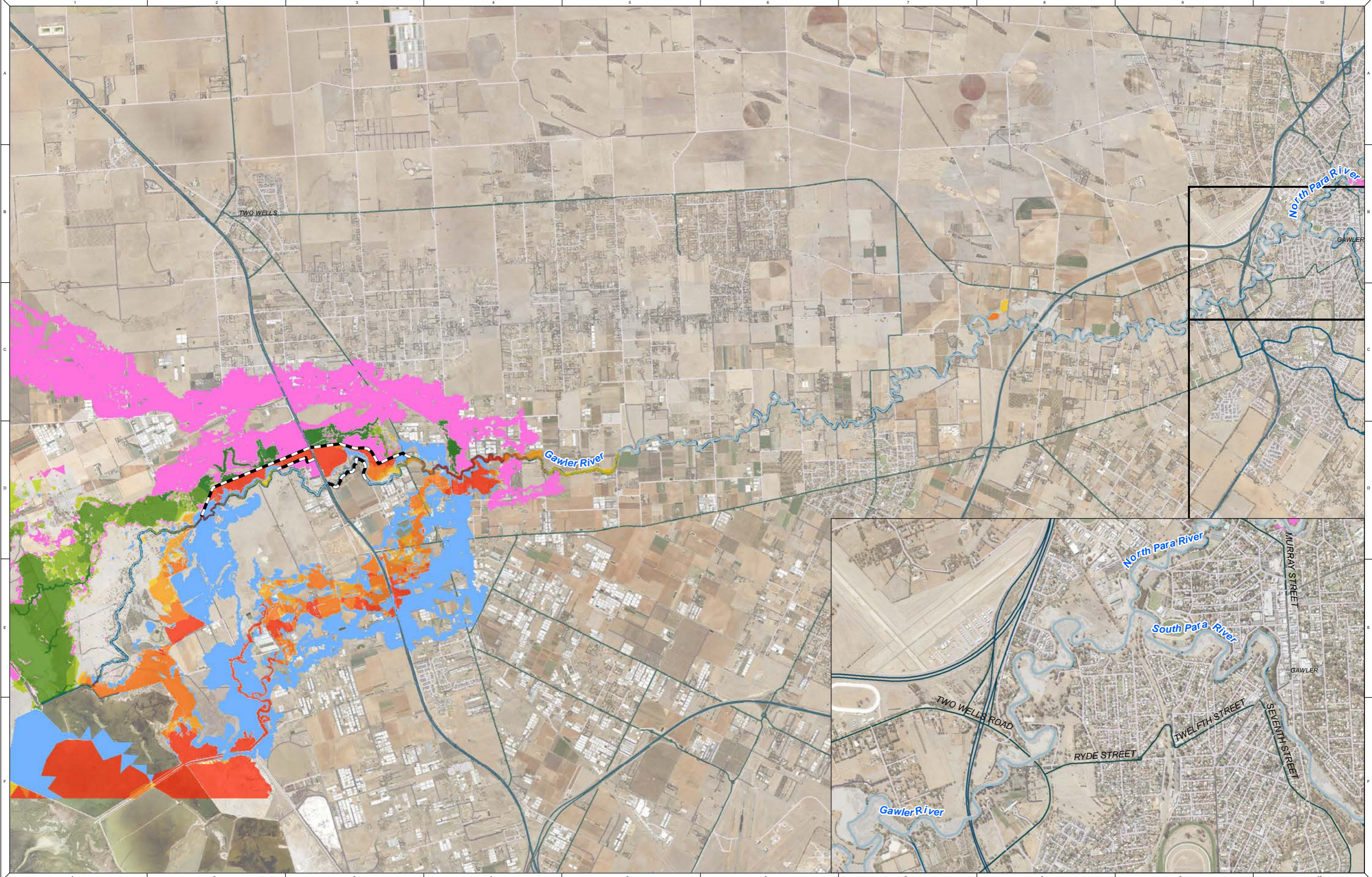
Gawler River Stormwater Management Plan

Figure B.16: 1% AEP - Northern Floodway - Flood Hazard

REFERENCE: M:\21030183_Gawler River SMP\Spatial\Workspaces\21030183_Gawler River SMP_Results_02J.mxd

DATE: 28/12/2022





NOTE
Water Technology Pty. Ltd. has prepared this document in accordance with instruction of GRFMA for their specific use.

DISCLAIMER
GRFMA and Water Technology Pty. Ltd. does not warrant that this document is definitive nor free from error and does not accept liability for any loss caused or arising from reliance upon information provided herein.

Contains DataSA Information

Change in Flood Levels (m)

More than 0.20m Lower

0.20 to -0.10

-0.10 to -0.05

-0.05 to -0.02

No Change (+/- 0.02)

0.02 - 0.05

0.05 - 0.10

0.10 - 0.20

More than 0.20m Higher

Was Dry, Now Wet

Was Wet, Now Dry

0

0.5

1

2

Kilometers

Proposed Levees

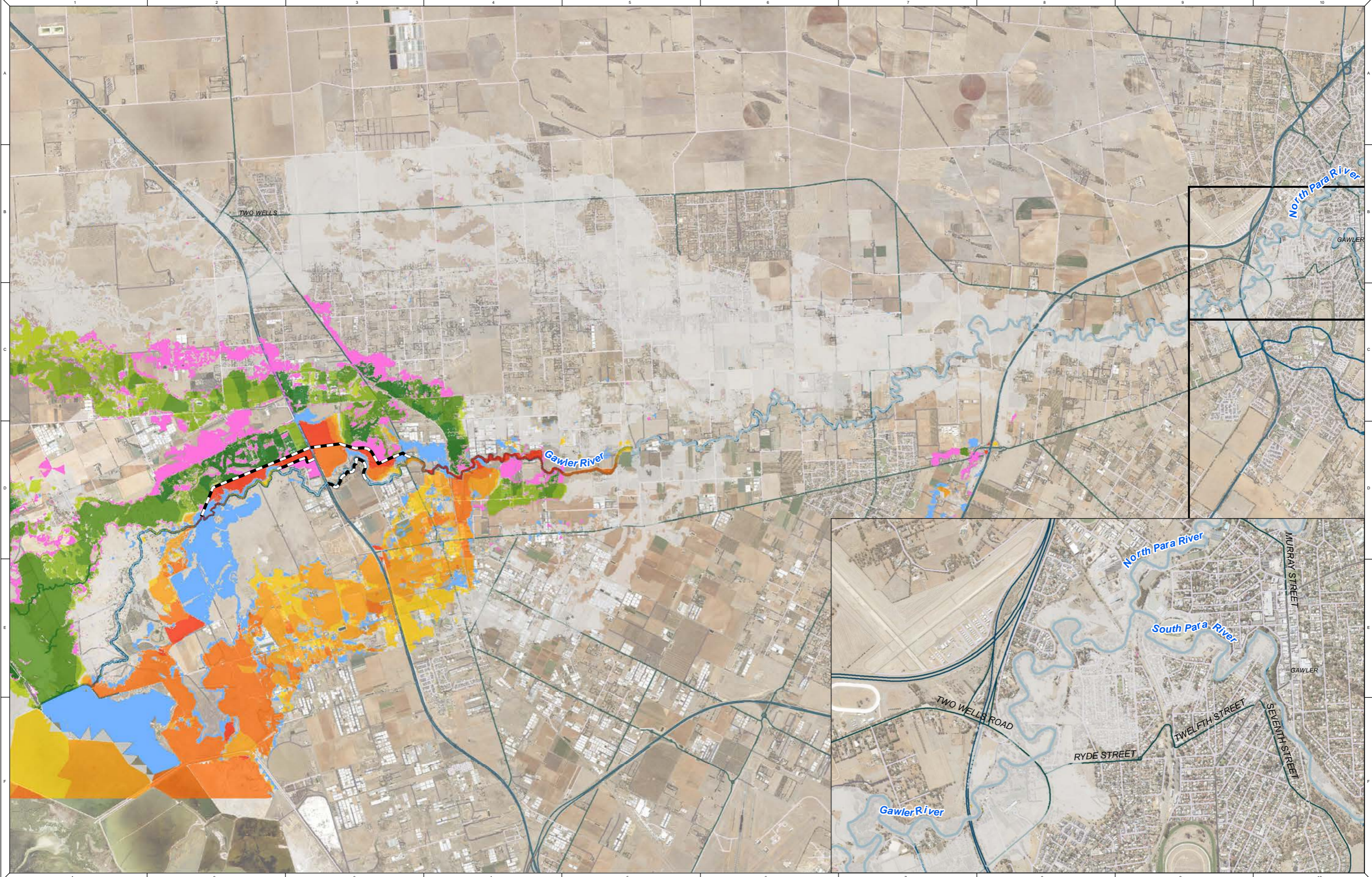
Gawler River Stormwater Management Plan

Figure C.08: 5% AEP - Northern Floodway - Flood Difference

REFERENCE: M:\21030183_Gawler River SMP\Spatial\Workspaces\21030183_Gawler River SMP_Results_02J_Difference.mxd

DATE: 1/31/2023

1:69,500 at A3



NOTE
Water Technology Pty. Ltd. has prepared this document in accordance
with instruction of GRFMA
for their specific use.

DISCLAIMER
GRFMA and Water Technology
Pty. Ltd. does not warrant that this document is definitive nor free from error and
does not accept liability for any loss caused or arising from reliance upon
information provided herein.

Contains DataSA Information



Change in Flood Levels (m)

More than 0.20m Lower	No Change (+/- 0.02)	0.10 - 0.20
-0.20 to -0.10	0.02 - 0.05	More than 0.20m Higher
-0.10 to -0.05	0.05 - 0.10	Was Dry, Now Wet
		Was Wet, Now Dry

0 0.5 1 2 Kilometers

Proposed Levees

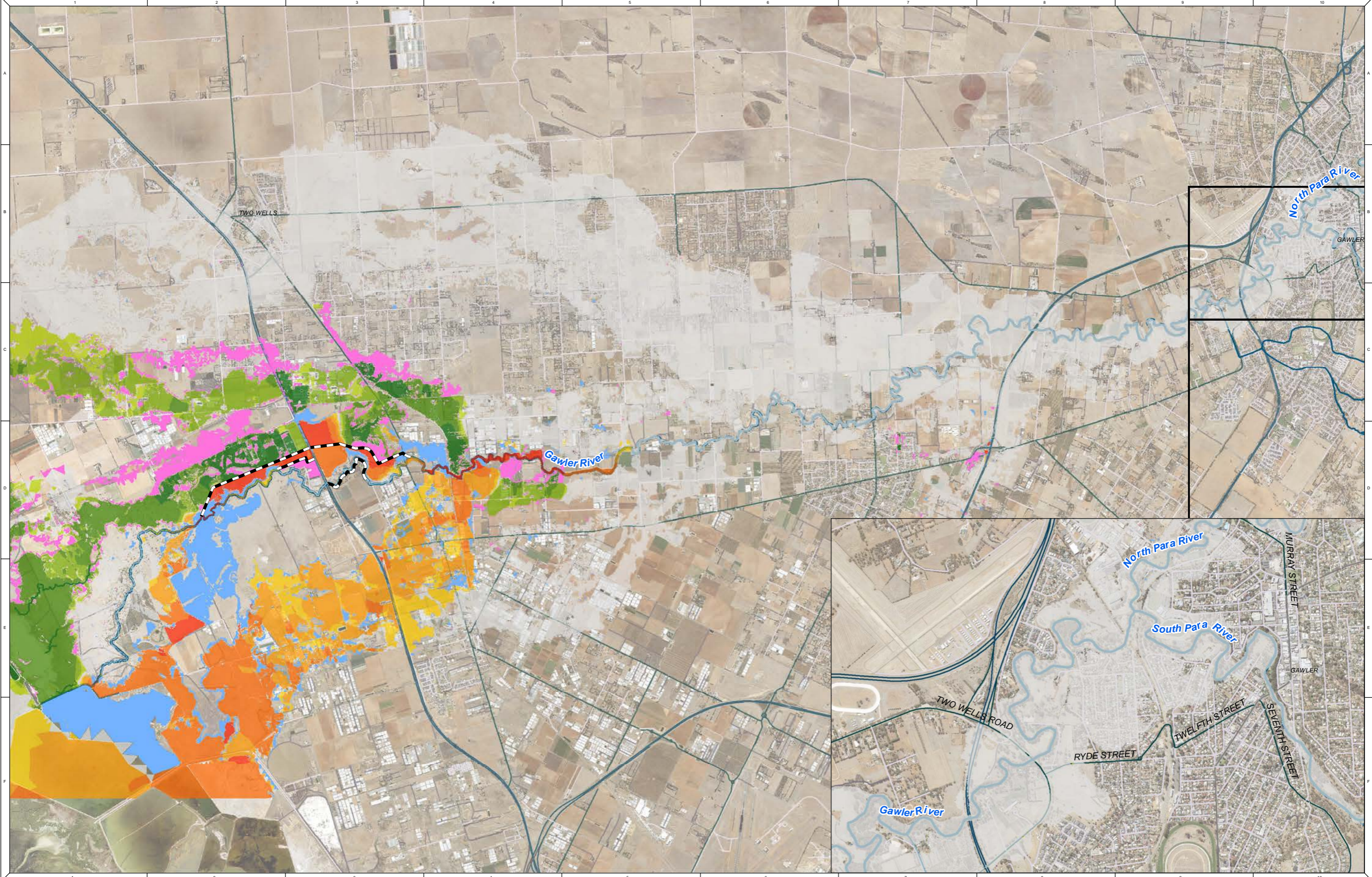


Gawler River Stormwater Management Plan

Figure C.09: 2% AEP - Northern Floodway - Flood Difference

REFERENCE: M:\21030183_Gawler River SMP\Spatial\Workspaces\21030183_Gawler River SMP_Results_02J_Difference.mxd

DATE: 1/8/2023



NOTE
Water Technology Pty. Ltd. has prepared this document in accordance with instruction of GRFMA for their specific use.

DISCLAIMER
GRFMA and Water Technology Pty. Ltd. does not warrant that this document is definitive nor free from error and does not accept liability for any loss caused or arising from reliance upon information provided herein.

Contains DataSA Information



Change in Flood Levels (m)	-0.05 to -0.02	0.10 - 0.20	Proposed Levees
More than 0.20m Lower	No Change (+/- 0.02)	More than 0.20m Higher	
-0.20 to -0.10	0.02 - 0.05	Was Dry, Now Wet	
-0.10 to -0.05	0.05 - 0.10	Was Wet, Now Dry	

0 0.5 1 2 Kilometers

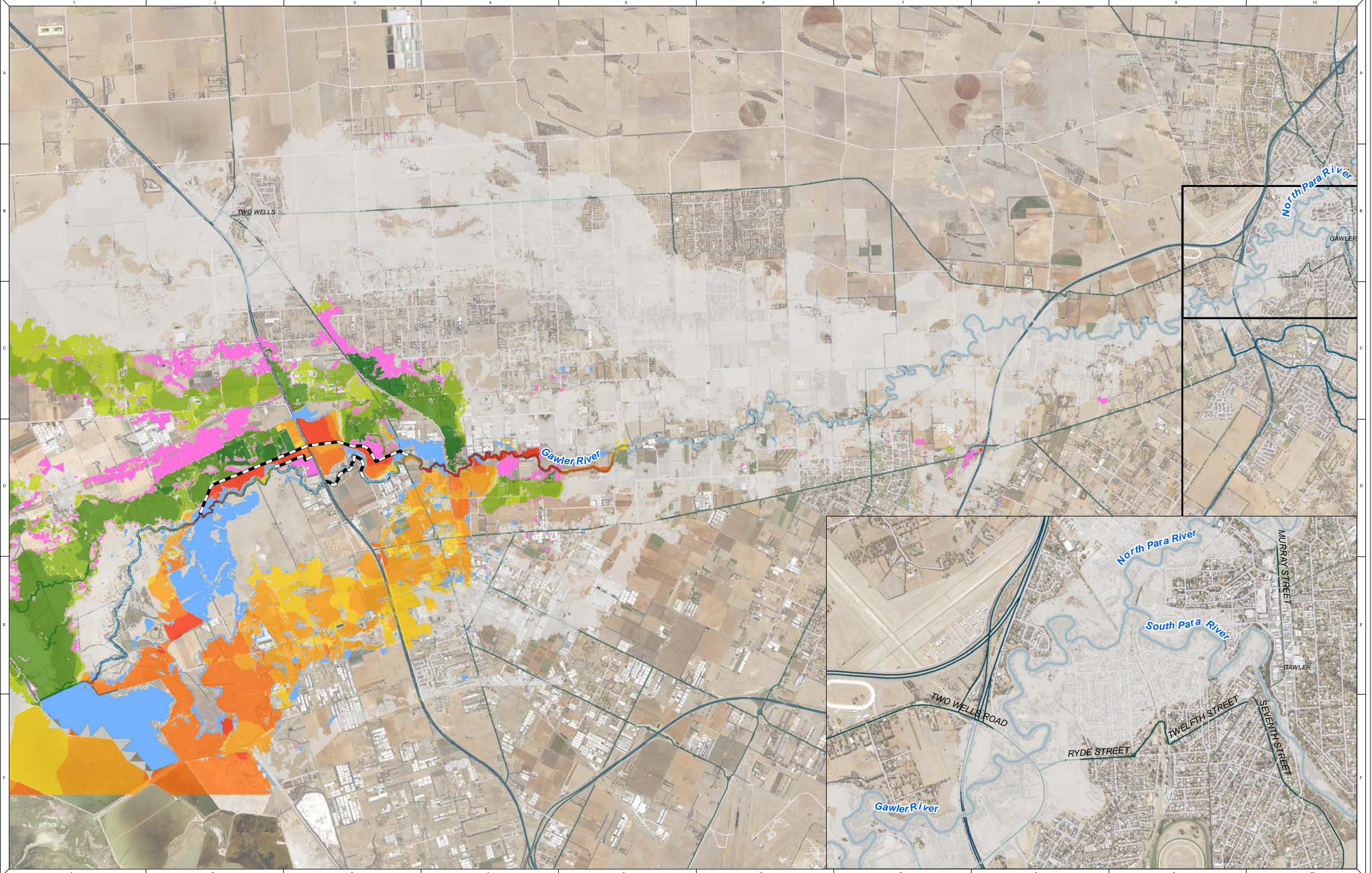


Gawler River Stormwater Management Plan

Figure C.10: 1% AEP - Northern Floodway - Flood Difference

REFERENCE: M:\21030183_Gawler River SMP\Spatial\Workspaces\21030183_Gawler_River_SMP_Results_02J_Difference.mxd

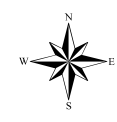
DATE: 1/8/2023



NOTE
Water Technology Pty. Ltd. has prepared this document in accordance with instruction of GRFMA for their specific use.

DISCLAIMER
GRFMA and Water Technology Pty. Ltd. does not warrant that this document is definitive nor free from error and does not accept liability for any loss caused or arising from reliance upon information provided herein.

Contains DataSA Information



Change in Flood Levels (m)

More than 0.20m Lower	-0.05 to -0.02	0.10 - 0.20
-0.20 to -0.10	No Change (+/- 0.02)	More than 0.20m Higher
-0.10 to -0.05	0.02 - 0.05	Was Dry, Now Wet
	0.05 - 0.10	Was Wet, Now Dry

0 0.5 1 2 Kilometers

▬ Proposed Levees

