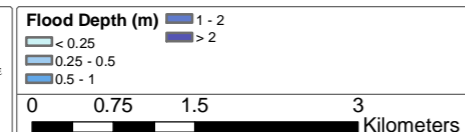


NOTE
Water Technology Pty. Ltd. has prepared this document in accordance with instruction of GRFMA for their specific use.

DISCLAIMER
GRFMA and Water Technology Pty. Ltd. does not warrant that this document is definitive nor free from error and does not accept liability for any loss caused or arising from reliance upon information provided herein.

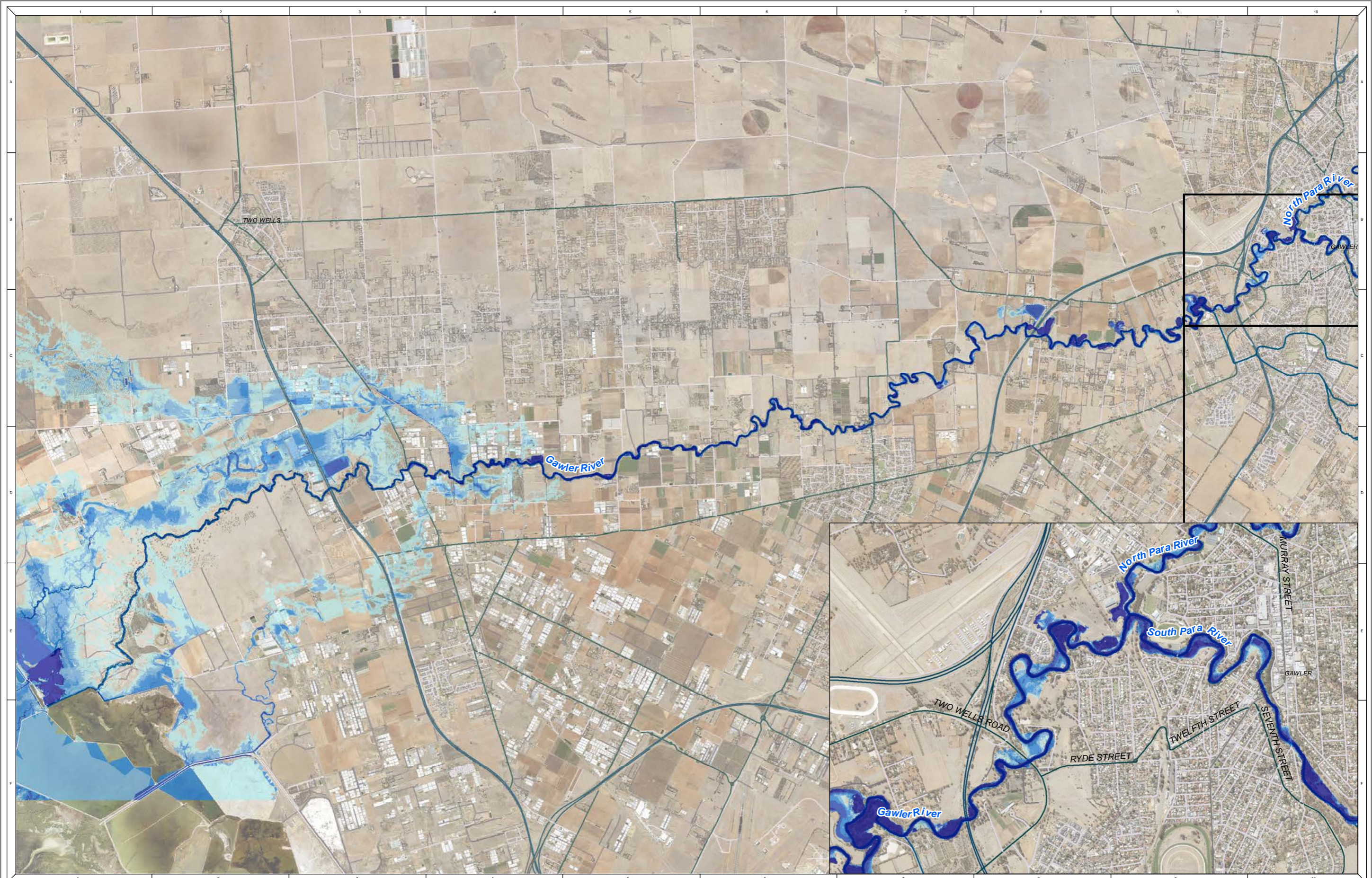
Contains DataSA Information

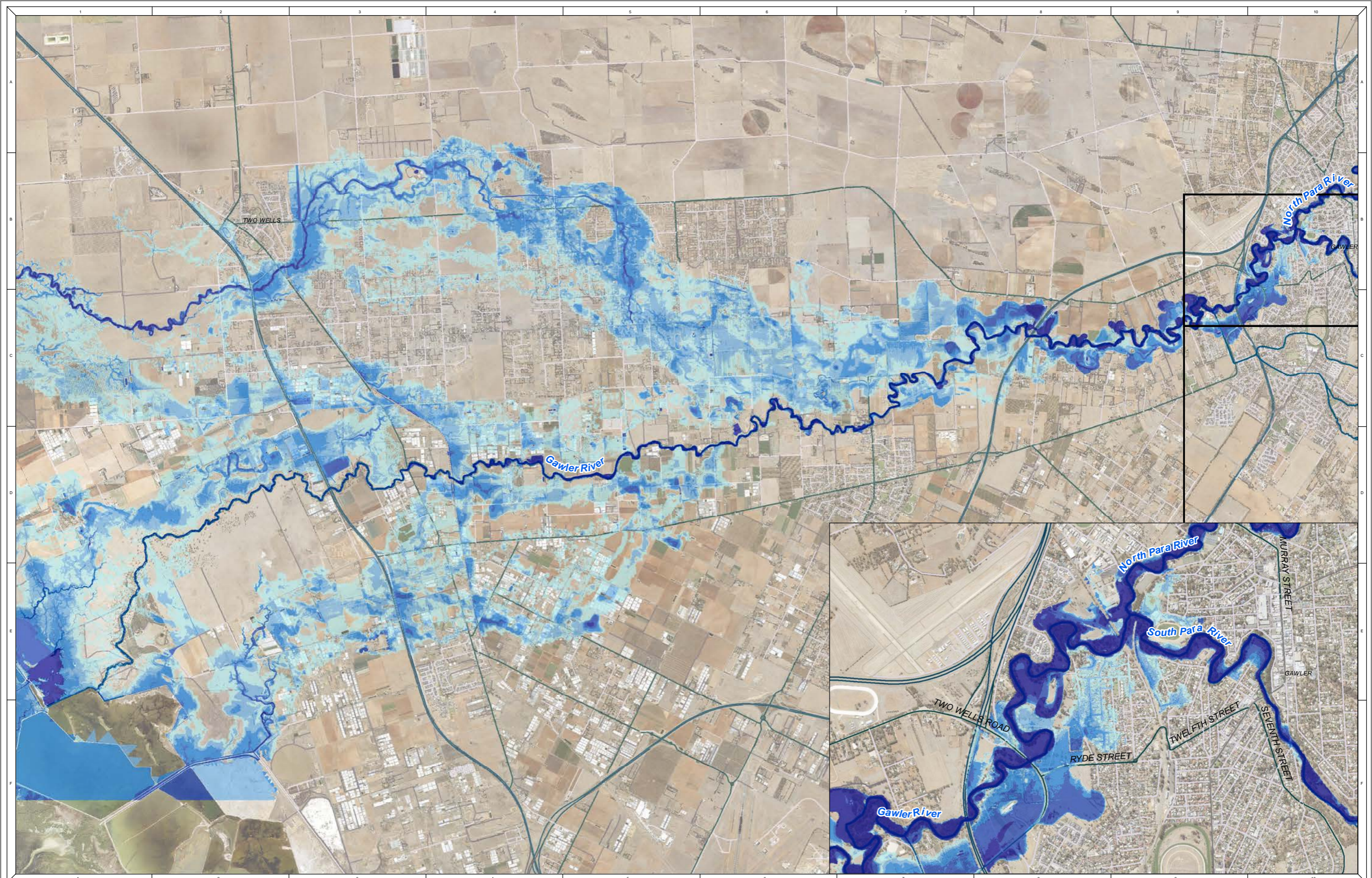


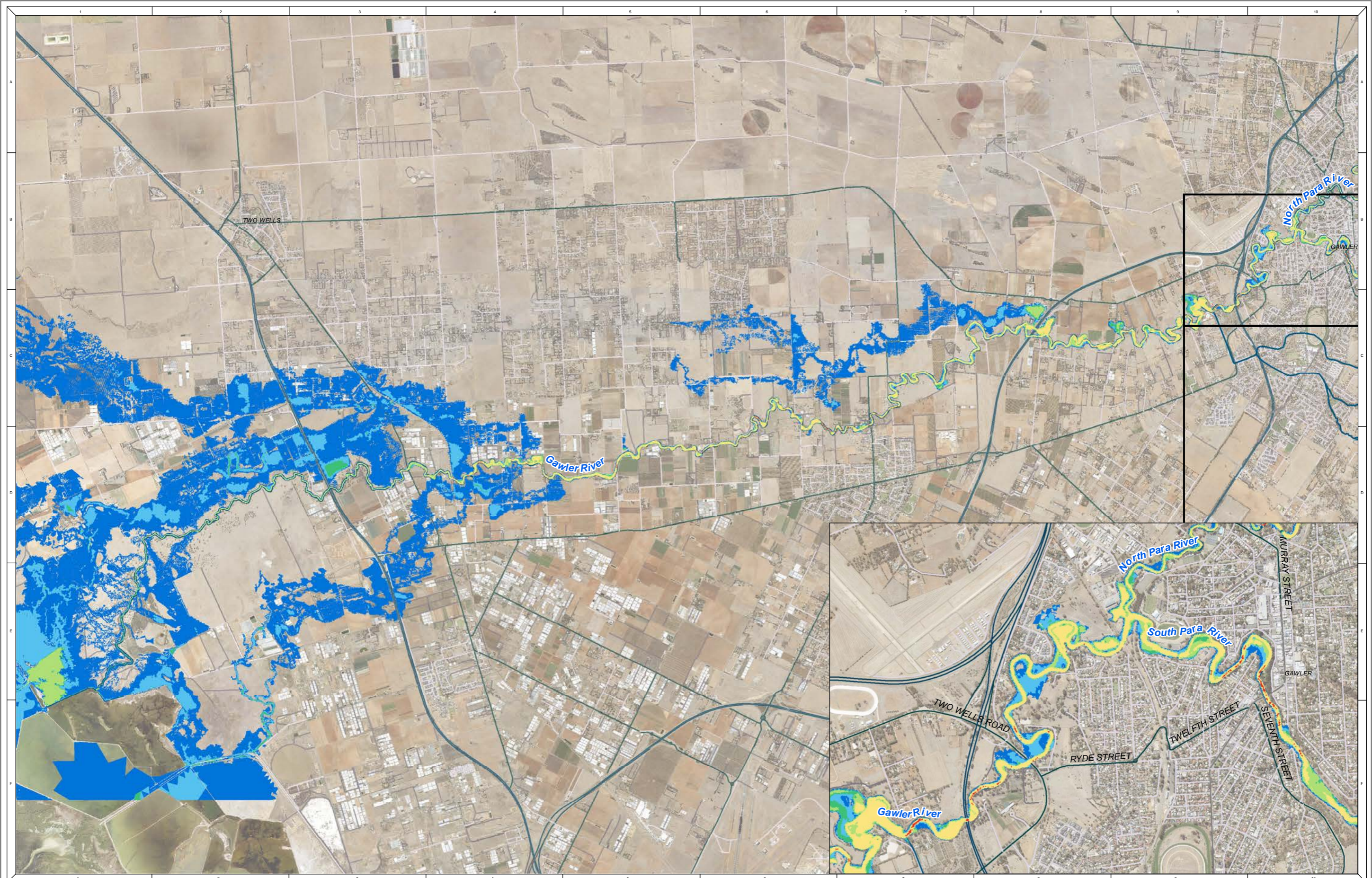
1:69,500 at A3

Gawler River Stormwater Management Plan
Figure A.07: 2% AEP - Dam Extension - Flood Depth

REFERENCE: M:\21030183_Gawler River SMP\Spatial\Workspaces\21030183_Gawler_River_SMP_Results_02J.mxd
DATE: 19/12/2022



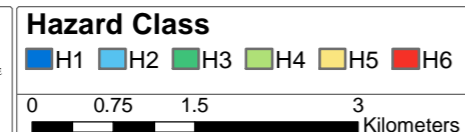




NOTE
Water Technology Pty. Ltd. has prepared this document in accordance with instruction of GRFMA for their specific use.

DISCLAIMER
GRFMA and Water Technology Pty. Ltd. does not warrant that this document is definitive nor free from error and does not accept liability for any loss caused or arising from reliance upon information provided herein.

Contains DataSA Information

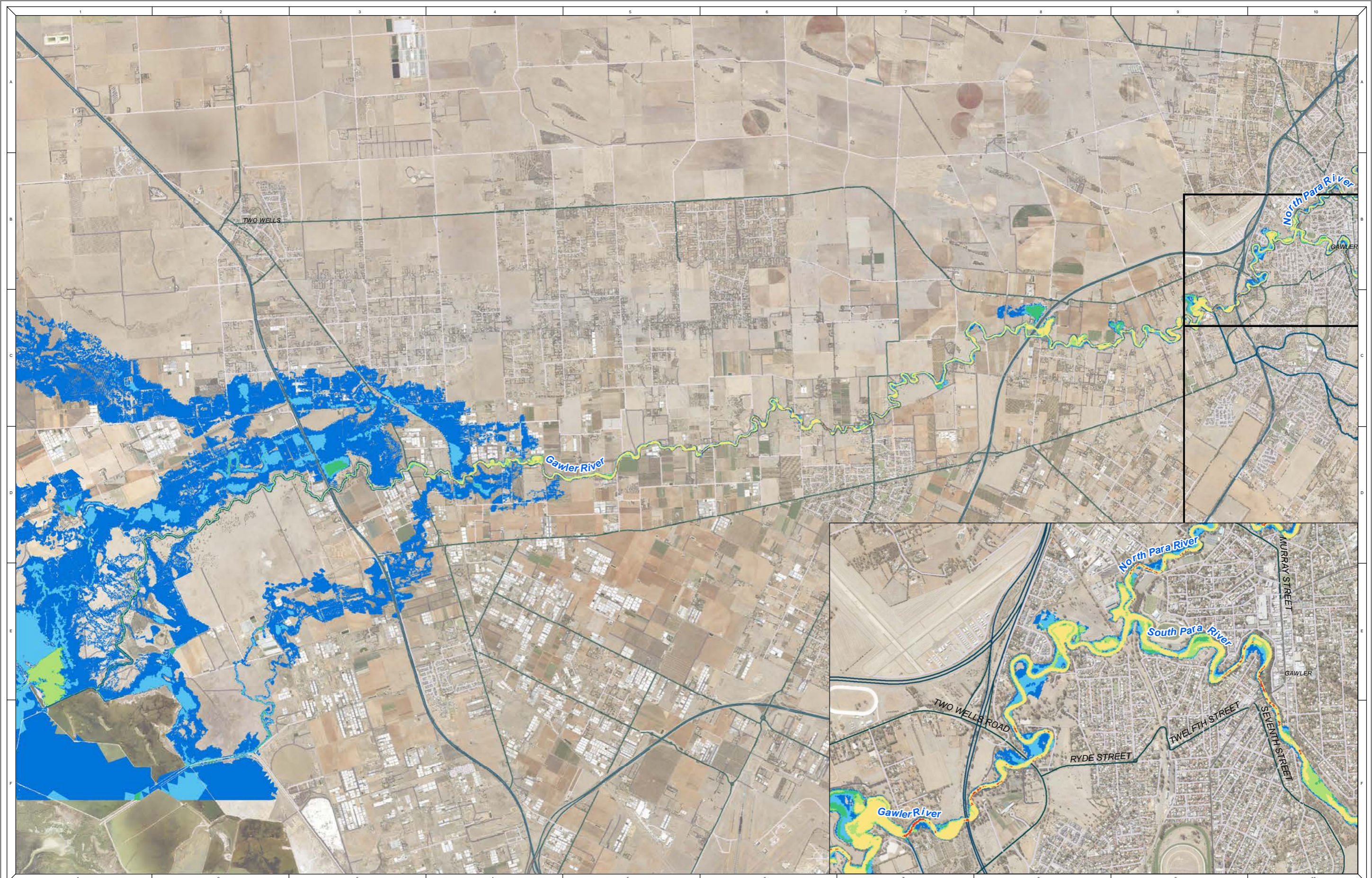


1:69,500 at A3



Gawler River Stormwater Management Plan
Figure B.07: 2% AEP - Dam Extension - Flood Hazard

REFERENCE: M:\21030183_Gawler River SMP\Spatial\Workspaces\21030183_Gawler_River_SMP_Results_02J.mxd
DATE: 2013/03/22



NOTE
Water Technology Pty. Ltd. has prepared this document in accordance with instruction of GRFMA for their specific use.

DISCLAIMER
GRFMA and Water Technology Pty. Ltd. does not warrant that this document is definitive nor free from error and does not accept liability for any loss caused or arising from reliance upon information provided herein.

Contains DataSA Information

Hazard Class

■ H1
 ■ H2
 ■ H3
 ■ H4
 ■ H5
 ■ H6

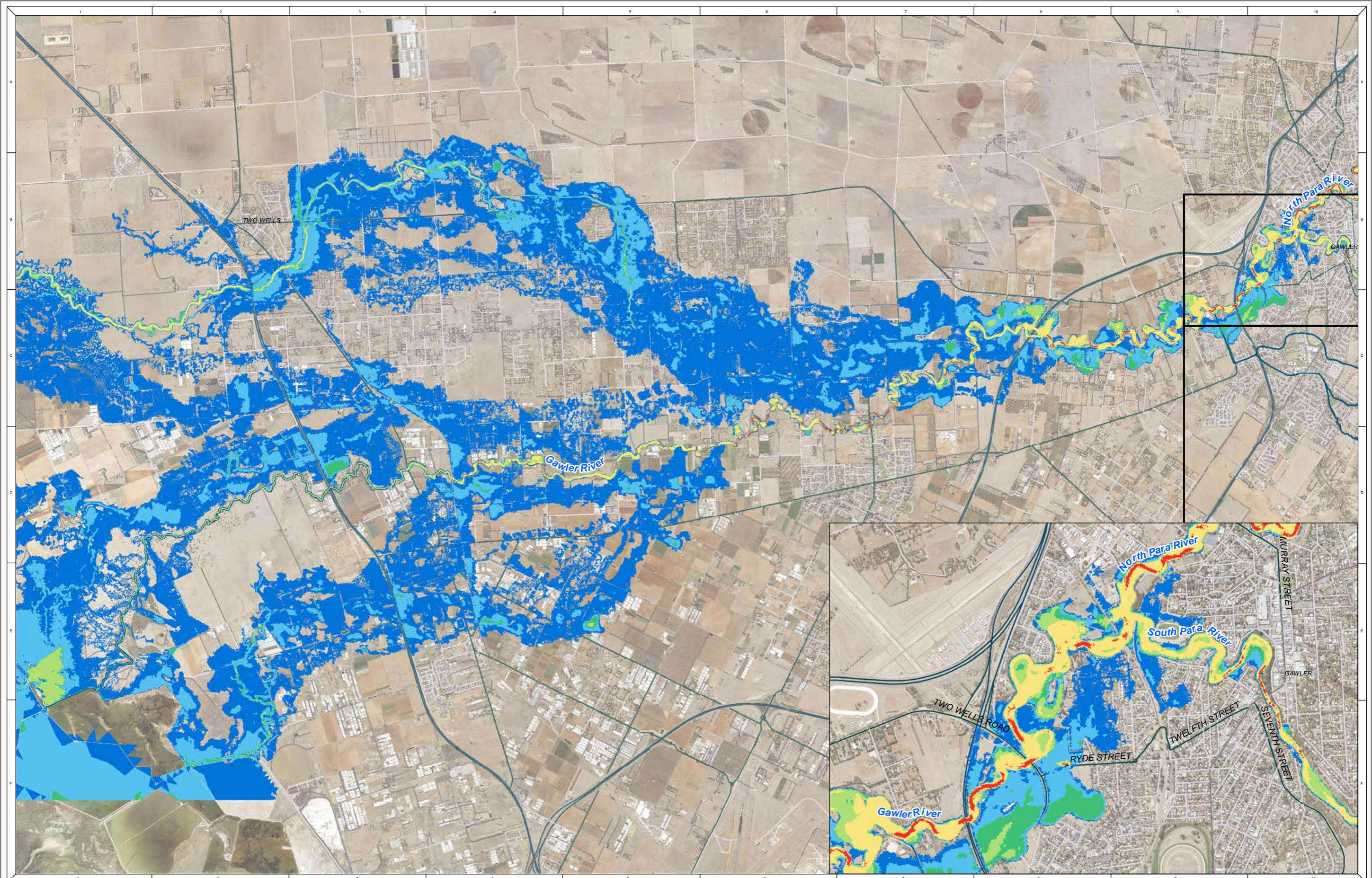
0 0.75 1.5 3 Kilometers

1:69,500 at A3



Gawler River Stormwater Management Plan
Figure B.08: 1% AEP - Dam Extension - Flood Hazard

REFERENCE: M:\21030183_Gawler River SMP\Spatial\Workspaces\21030183_Gawler_River_SMP_Results_02J.mxd
DATE: 2012/02/22



NOTE
Water Technology Pty. Ltd. has prepared this document in accordance with instruction of GRFMA for their specific use.

DISCLAIMER
GRFMA and Water Technology Pty. Ltd. does not warrant that this document is definitive nor free from error and does not accept liability for any loss caused or arising from reliance upon information provided herein.

Contains DataSA Information

Hazard Class

■ H1
 ■ H2
 ■ H3
 ■ H4
 ■ H5
 ■ H6

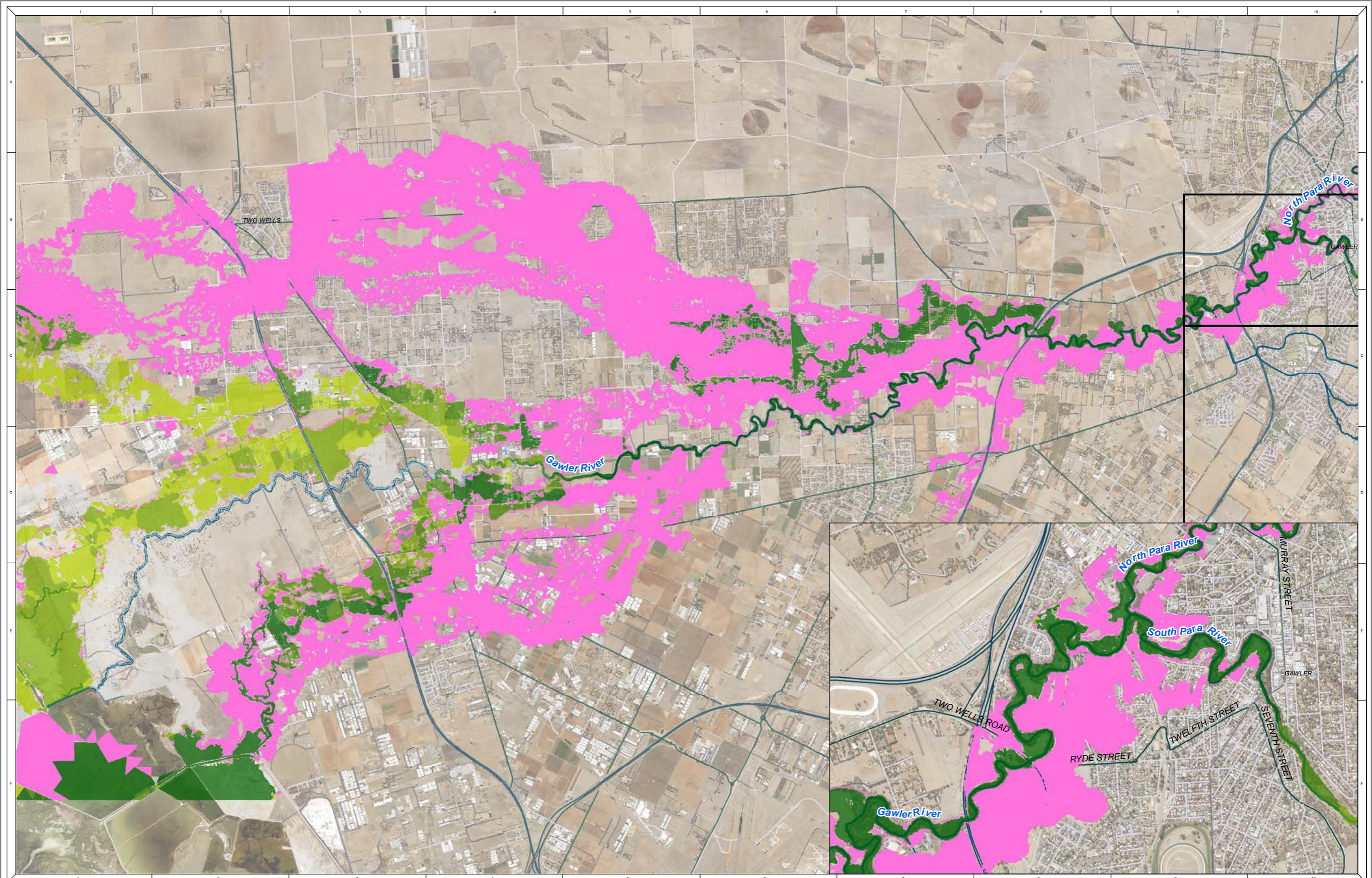
0 0.75 1.5 3 Kilometers

1:69,500 at A3



Gawler River Stormwater Management Plan
Figure B.09: 0.5% AEP - Dam Extension - Flood Hazard

REFERENCE: M:\21030183_Gawler River SMP\Spatial\Workspaces\21030183_Gawler_River_SMP_Results_02J.mxd
DATE: 2012/02/22



NOTE
Water Technology Pty. Ltd. has prepared this document in accordance with instruction of GRFMA for their specific use.

DISCLAIMER
GRFMA and Water Technology Pty. Ltd. does not warrant that this document is definitive nor free from error and does not accept liability for any loss caused or arising from reliance upon information provided herein.

Contains DataSA Information

| Change in Flood Levels (m) | | 0.10 - 0.20 |
|----------------------------|----------------------|------------------------|
| More than 0.20m Lower | No Change (+/- 0.02) | More than 0.20m Higher |
| -0.20 to -0.10 | 0.02 - 0.05 | Was Dry, Now Wet |
| -0.10 to -0.05 | 0.05 - 0.10 | Was Wet, Now Dry |

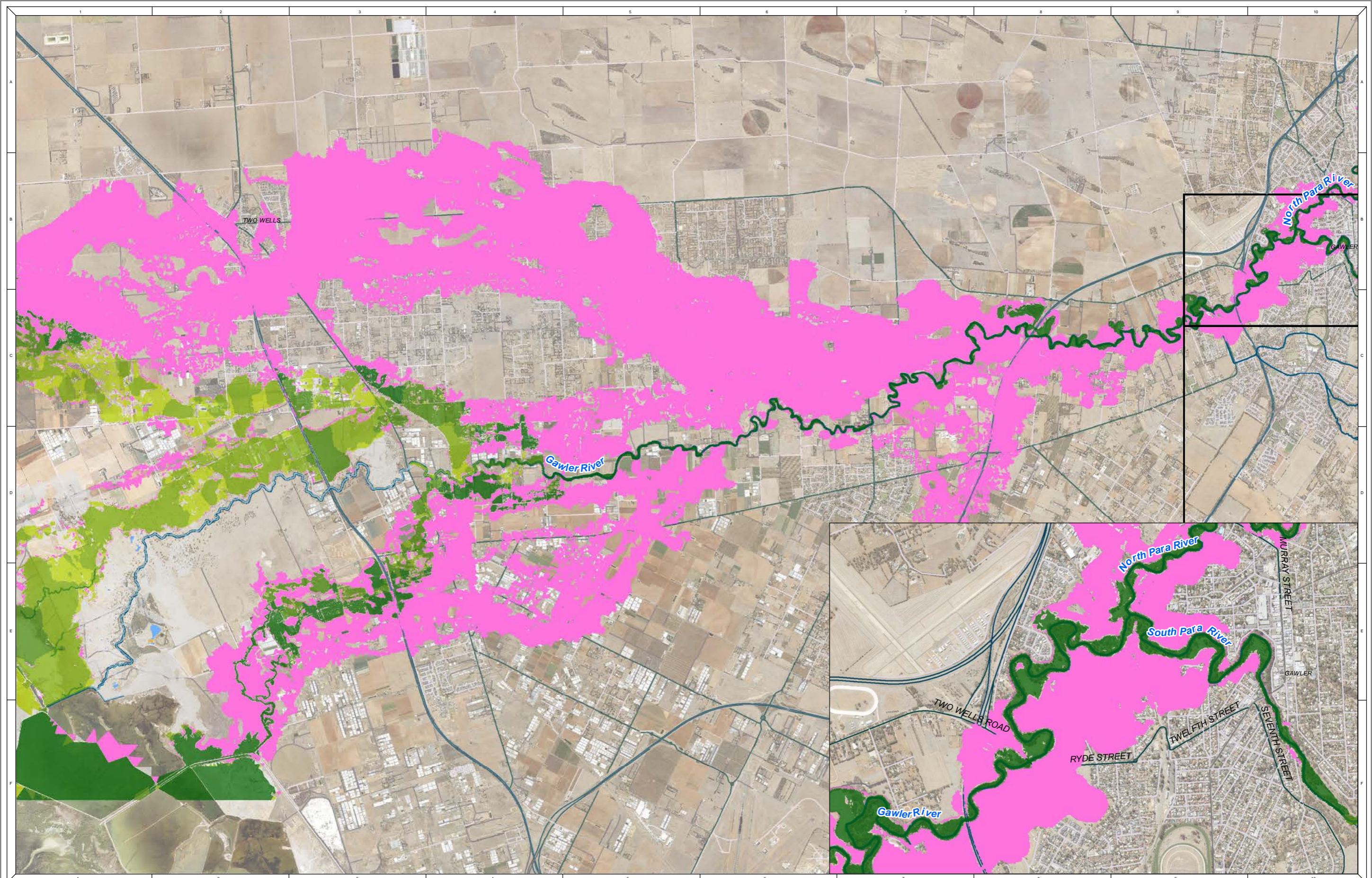
0 0.5 2 Kilometers

1:69,500 at A3



Gawler River Stormwater Management Plan
Figure C.01: 2% AEP - Dam Extension - Flood Difference

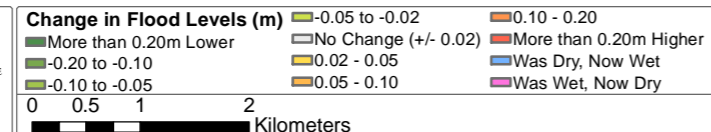
REFERENCE: M:\21030183_Gawler River SMP\Spatial\Workspaces\21030183_Gawler_River_SMP_Results_02J_Difference.mxd
DATE: 28/12/2022



NOTE
Water Technology Pty. Ltd. has prepared this document in accordance with instruction of GRFMA
for their specific use.

DISCLAIMER
GRFMA and Water Technology Pty. Ltd. does not warrant that this document is definitive nor free from error and does not accept liability for any loss caused or arising from reliance upon information provided herein.

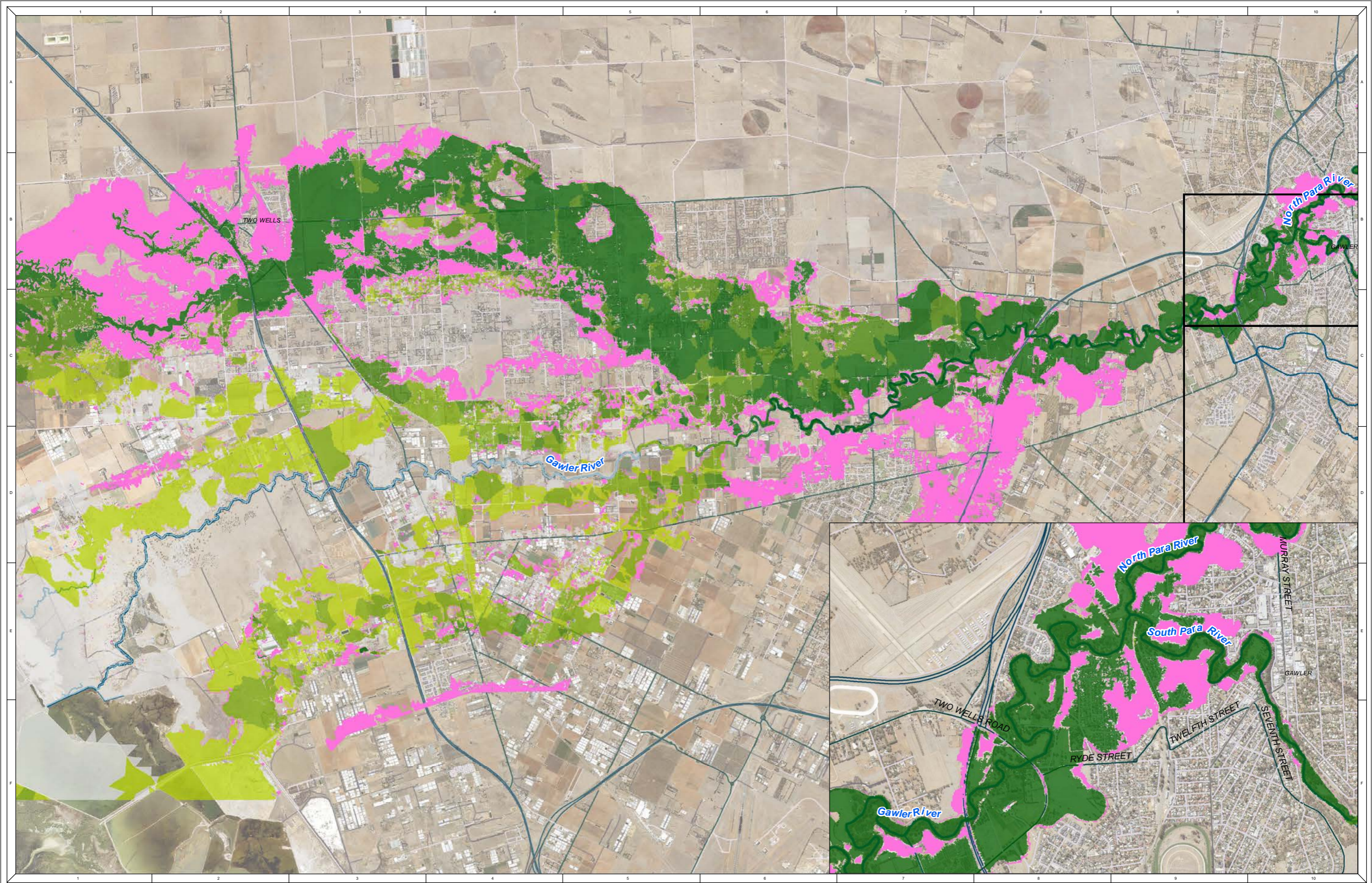
Contains DataSA Information



1:69,500 at A3

Gawler River Stormwater Management Plan
Figure C.02: 1% AEP - Dam Extension - Flood Difference

REFERENCE: M:\21030183_Gawler River SMP\Spatial\Workspaces\21030183_Gawler_River_SMP_Results_02J_Difference.mxd
DATE: 28/12/2022



NOTE
Water Technology Pty. Ltd. has prepared this document in accordance with instruction of GRFMA for their specific use.

DISCLAIMER
GRFMA and Water Technology Pty. Ltd. does not warrant that this document is definitive nor free from error and does not accept liability for any loss caused or arising from reliance upon information provided herein.

Contains DataSA Information

| | | |
|-----------------------------------|----------------------|------------------------|
| Change in Flood Levels (m) | -0.05 to -0.02 | 0.10 - 0.20 |
| More than 0.20m Lower | No Change (+/- 0.02) | More than 0.20m Higher |
| -0.20 to -0.10 | 0.02 - 0.05 | Was Dry, Now Wet |
| -0.10 to -0.05 | 0.05 - 0.10 | Was Wet, Now Dry |

0 0.5 1 2 Kilometers

1:69,500 at A3



Gawler River Stormwater Management Plan
Figure C.03: 0.5% AEP - Dam Extension - Flood Difference

REFERENCE: M:\21030183_Gawler River SMP\Spatial\Workspaces\21030183_Gawler_River_SMP_Results_02J_Difference.mxd
DATE: 28/12/2022