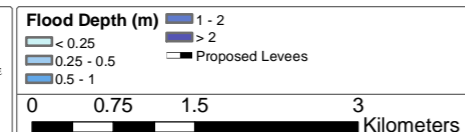


NOTE
Water Technology Pty. Ltd. has prepared this document in accordance with instruction of GRFMA for their specific use.

DISCLAIMER
GRFMA and Water Technology Pty. Ltd. does not warrant that this document is definitive nor free from error and does not accept liability for any loss caused or arising from reliance upon information provided herein.

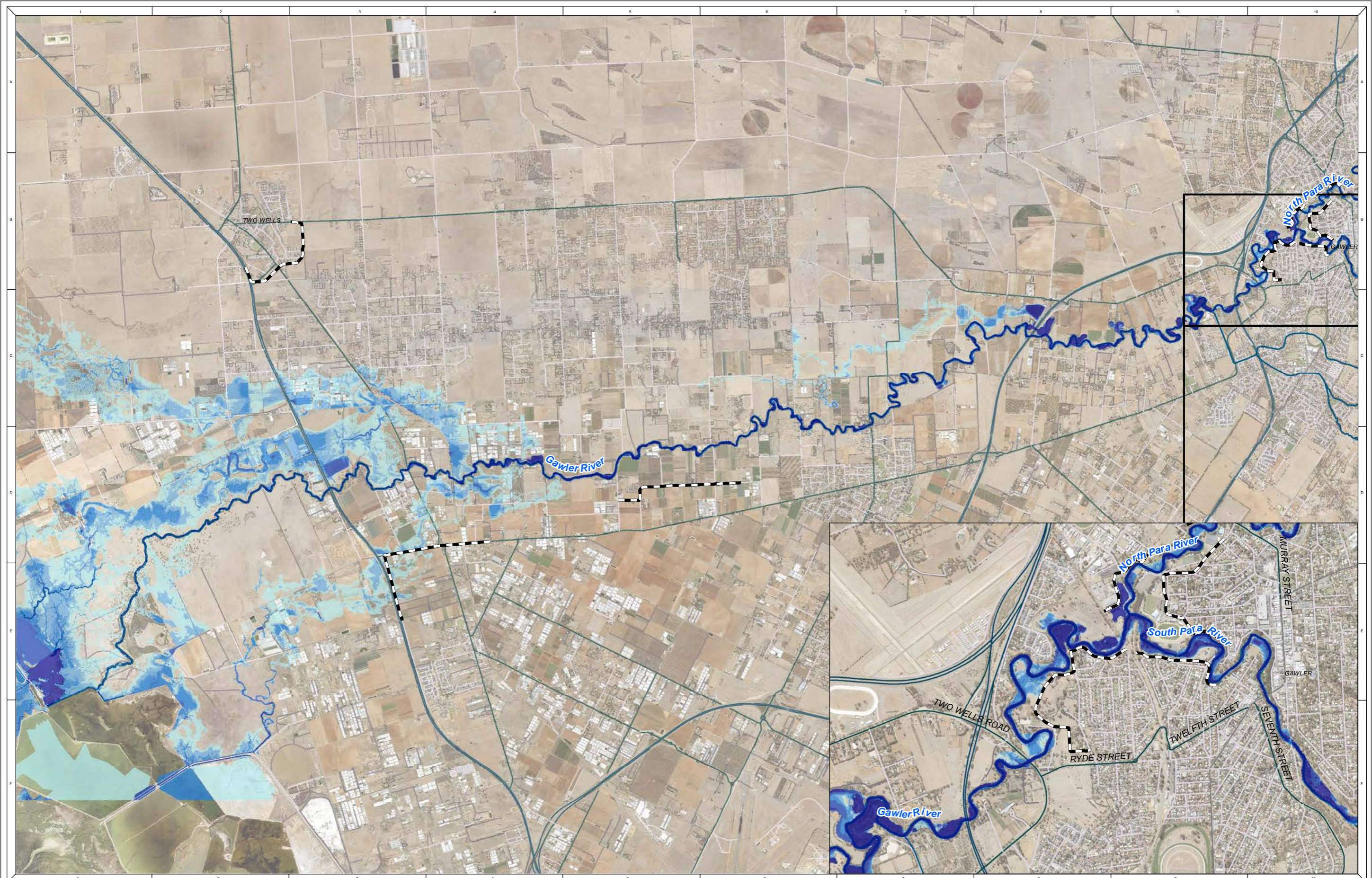
Contains DataSA Information



1:69,500 at A3

Gawler River Stormwater Management Plan
Figure A.10: 10% AEP - Strategic Levees - Flood Depth

REFERENCE: M:\21030183_Gawler River SMP\Spatial\Workspaces\21030183_Gawler_River_SMP_Results_02J.mxd
DATE: 19/12/2022



NOTE
Water Technology Pty. Ltd. has prepared this document in accordance with instruction of GRFMA for their specific use.

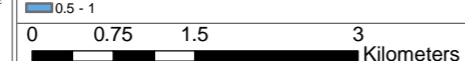
DISCLAIMER
GRFMA and Water Technology Pty. Ltd. does not warrant that this document is fitting nor free from error and does not accept liability for any loss caused or arising from reliance upon information provided herein.

Contains DataSA Information



Flood Depth (m)

< 0.25	1 - 2
0.25 - 0.5	> 2
0.5 - 1	Proposed Levees



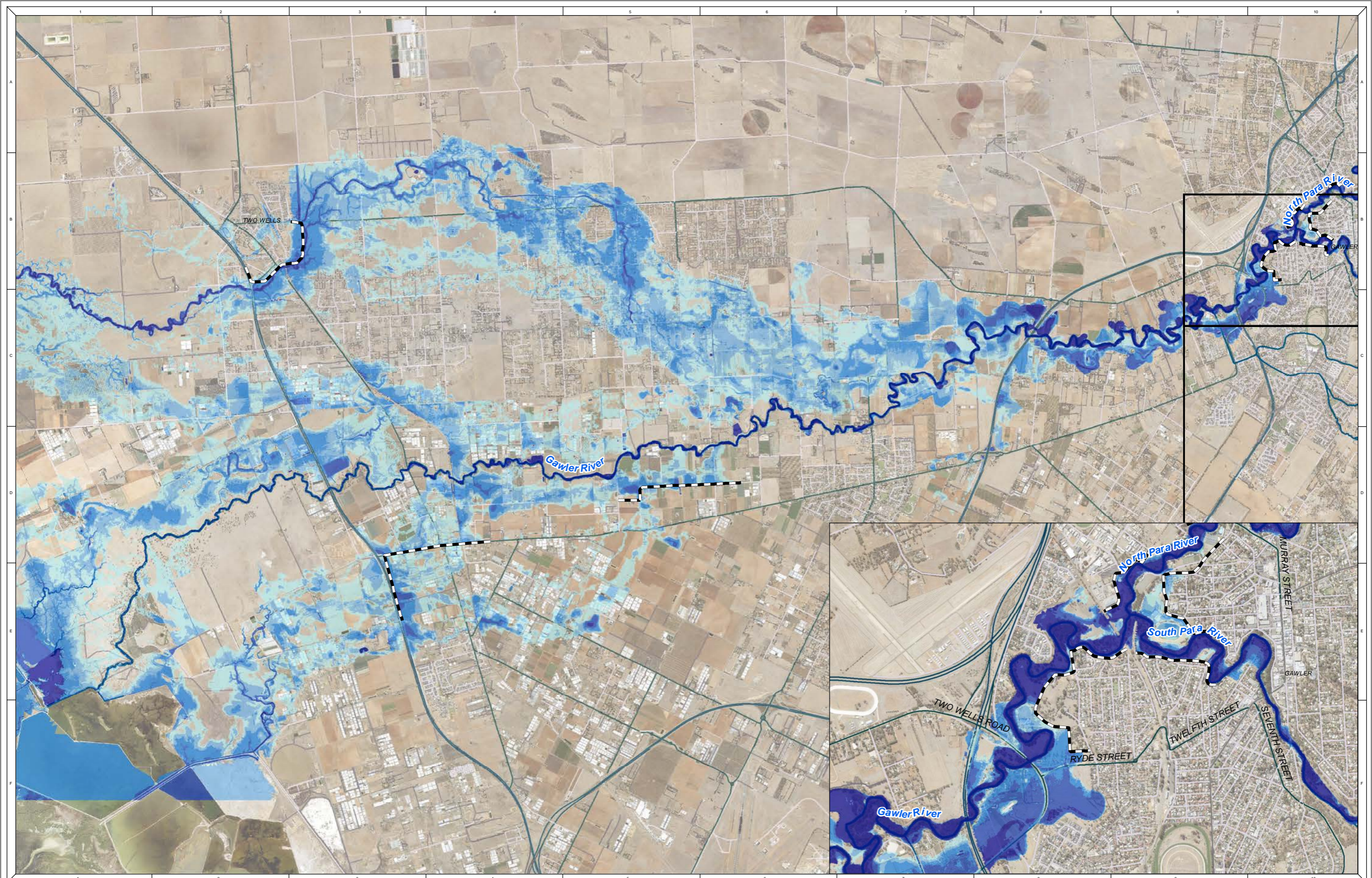
1:69,500 at A3



Gawler River Stormwater Management Plan

Figure A.11: 5% AEP - Strategic Levees - Flood Depth

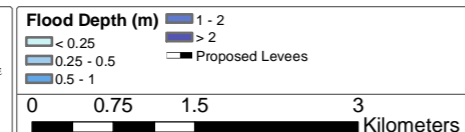
REFERENCE: M:\21030183_Gawler River SMP\Spatial\Workspaces\21030183_Gawler River SMP_Results_02J.mxd
DATE: 19/12/2022



NOTE
Water Technology Pty. Ltd. has prepared this document in accordance with instruction of GRFMA for their specific use.

DISCLAIMER
GRFMA and Water Technology Pty. Ltd. does not warrant that this document is definitive nor free from error and does not accept liability for any loss caused or arising from reliance upon information provided herein.

Contains DataSA Information

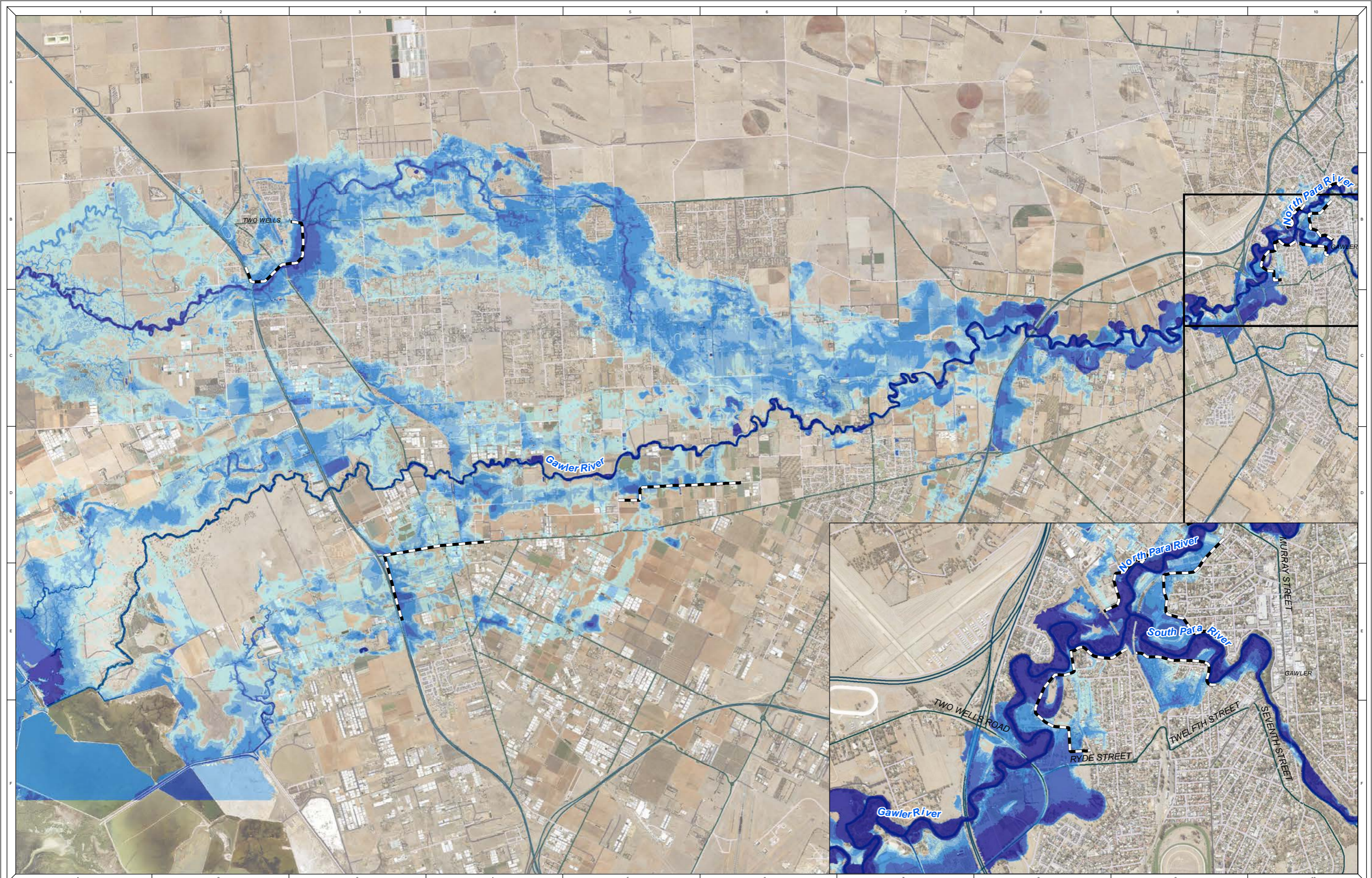


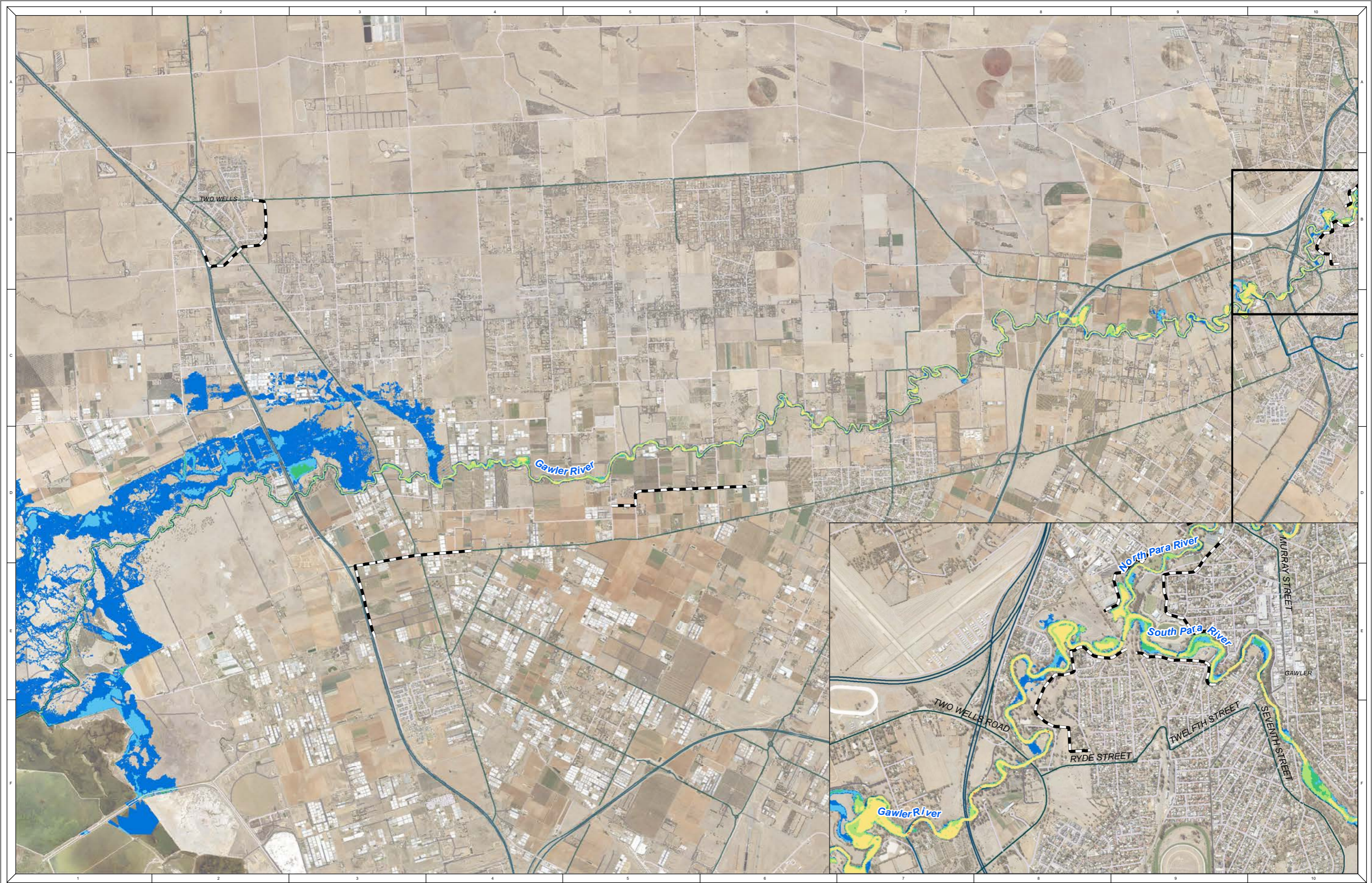
1:69,500 at A3



Gawler River Stormwater Management Plan
Figure A.12: 2% AEP - Strategic Levees - Flood Depth

REFERENCE: M:\21030183_Gawler River SMP\Spatial\Workspaces\21030183_Gawler River SMP_Results_02J.mxd
 DATE: 19/12/2022





NOTE
Water Technology Pty. Ltd. has prepared this document in accordance with instruction of GRFMA for their specific use.

DISCLAIMER
GRFMA and Water Technology Pty. Ltd. does not warrant that this document is definitive nor free from error and does not accept liability for any loss caused or arising from reliance upon information provided herein.

Contains DataSA Information

Hazard Class

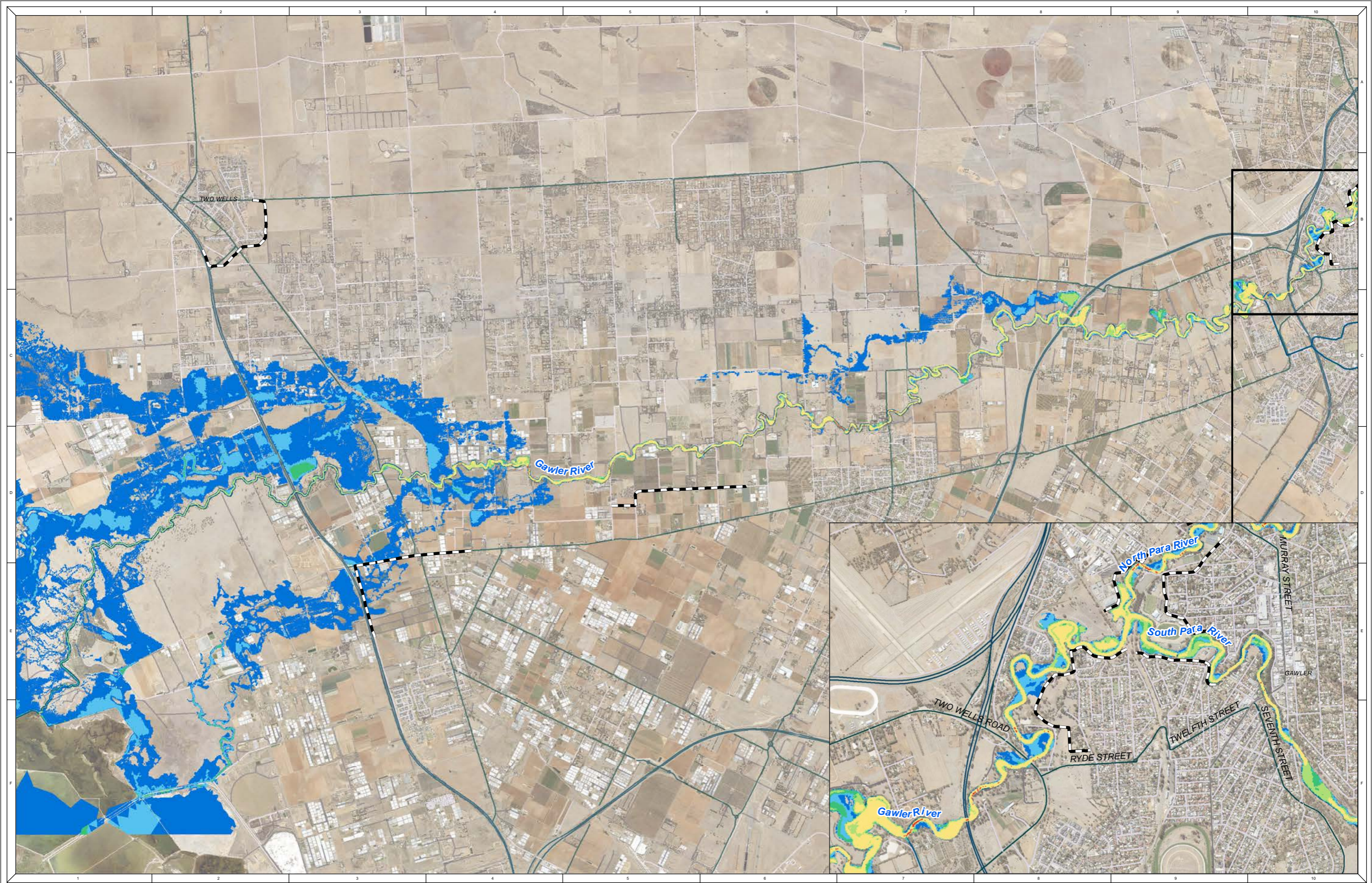
■ H1
 ■ H2
 ■ H3
 ■ H4
 ■ H5
 ■ H6
 Proposed Levees

1:63,360 at A3

WATER TECHNOLOGY
WATER, COASTAL & ENVIRONMENTAL CONSULTANTS

Gawler River Stormwater Management Plan
Figure B.10: 10% AEP - Strategic Levees - Flood Hazard

REFERENCE: M:\21030183_Gawler River SMP\Spatial\Workspaces\21030183_Gawler_River_SMP_Results_02J.mxd
DATE: 2012/02/22



NOTE
Water Technology Pty. Ltd. has prepared this document in accordance with instruction of GRFMA for their specific use.

DISCLAIMER
GRFMA and Water Technology Pty. Ltd. does not warrant that this document is definitive nor free from error and does not accept liability for any loss caused or arising from reliance upon information provided herein.

Contains DataSA Information

Hazard Class

— Proposed Levees

■ H1
 ■ H2
 ■ H3
 ■ H4
 ■ H5
 ■ H6

0 0.5 1 2 Kilometers

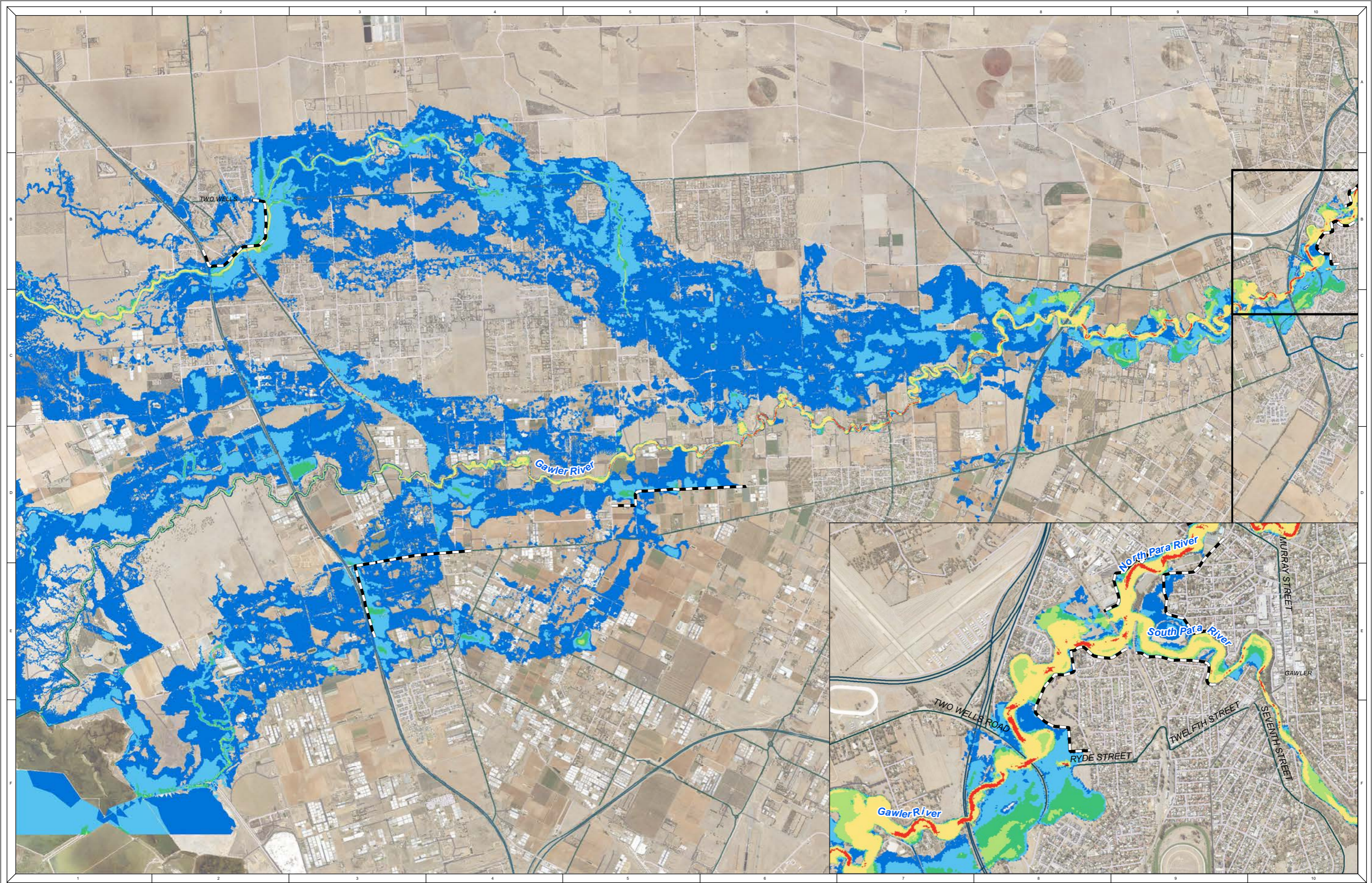
1:63,360 at A3

Gawler River Stormwater Management Plan

Figure B.11: 5% AEP - Strategic Levees - Flood Hazard

REFERENCE: M:\21030183_Gawler River SMP\Spatial\Workspaces\21030183_Gawler_River_SMP_Results_02J.mxd

DATE: 2013/03/22



NOTE
 Water Technology Pty. Ltd. has prepared this document in accordance with instruction of GRFMA for their specific use.

DISCLAIMER
 GRFMA and Water Technology Pty. Ltd. does not warrant that this document is definitive nor free from error and does not accept liability for any loss caused or arising from reliance upon information provided herein.

Contains DataSA Information

Hazard Class

■ H1
 ■ H2
 ■ H3
 ■ H4
 ■ H5
 ■ H6
 Proposed Levees

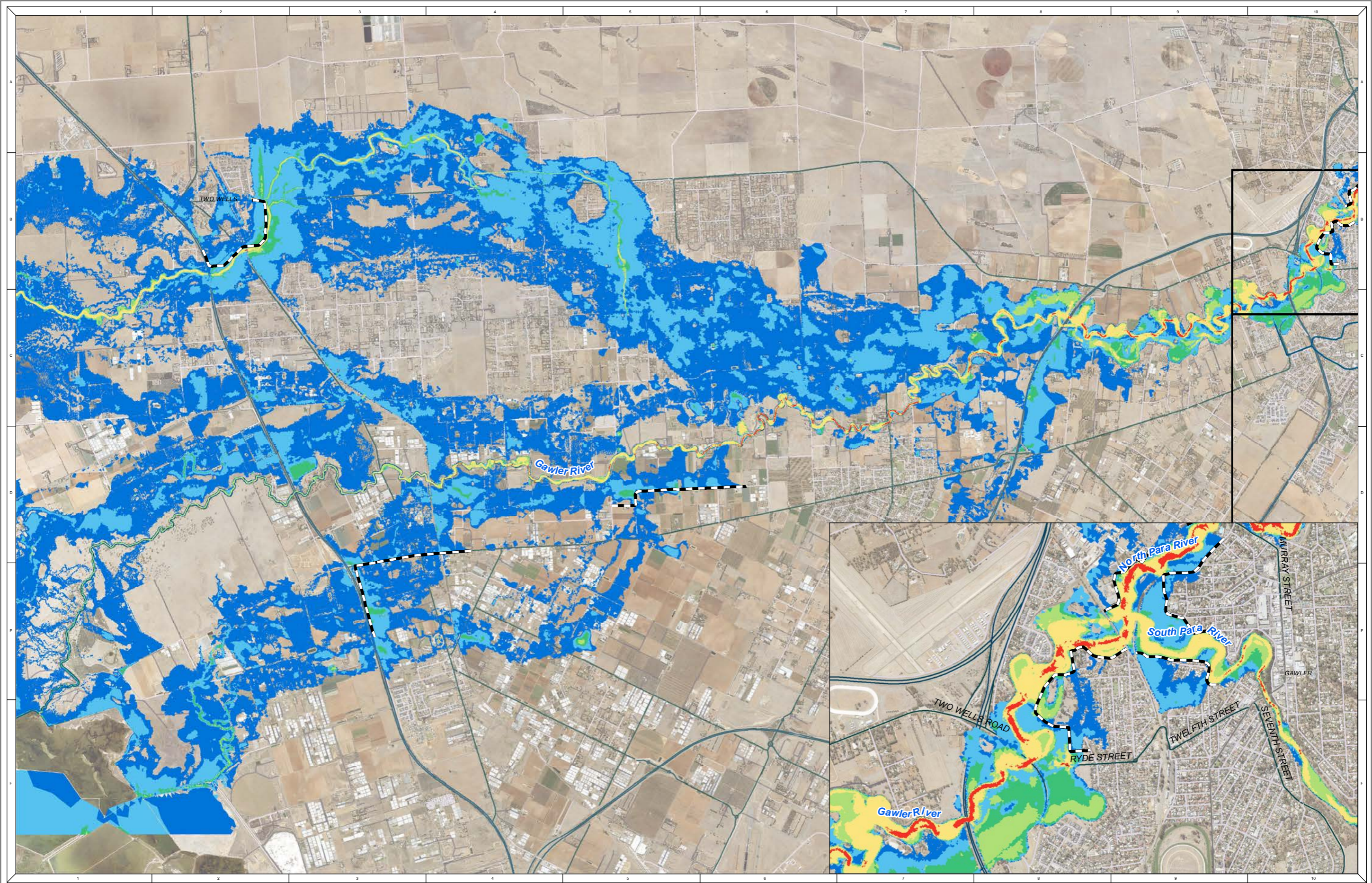
0 0.5 1 2 Kilometers

WATER TECHNOLOGY
WATER, COASTAL & ENVIRONMENTAL CONSULTANTS

1:63,360 at A3

Gawler River Stormwater Management Plan
 Figure B.12: 2% AEP - Strategic Levees - Flood Hazard

REFERENCE: M:\21030183_Gawler River SMP\Spatial\Workspaces\21030183_Gawler_River_SMP_Results_02J.mxd
 DATE: 2019/02/02



NOTE
Water Technology Pty. Ltd. has prepared this document in accordance with instruction of GRFMA for their specific use.

DISCLAIMER
GRFMA and Water Technology Pty. Ltd. does not warrant that this document is definitive nor free from error and does not accept liability for any loss caused or arising from reliance upon information provided herein.

Contains DataSA Information

Hazard Class

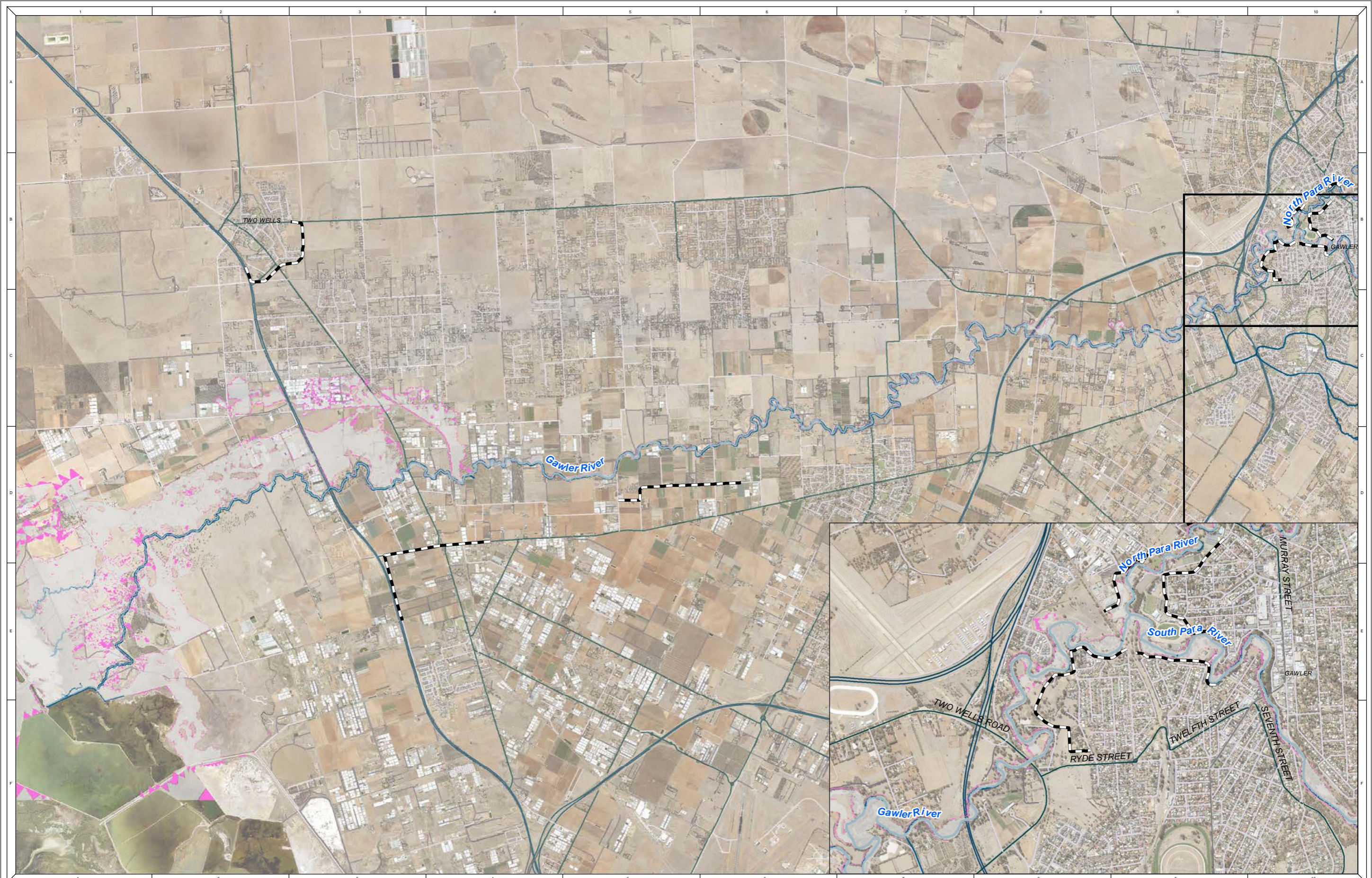
■ H1
 ■ H2
 ■ H3
 ■ H4
 ■ H5
 ■ H6
 Proposed Levees

1:63,360 at A3

WATER TECHNOLOGY
WATER, COASTAL & ENVIRONMENTAL CONSULTANTS

Gawler River Stormwater Management Plan
Figure B.13: 1% AEP - Strategic Levees - Flood Hazard

REFERENCE: M:\21030183_Gawler River SMP\Spatial\Workspaces\21030183_Gawler_River_SMP_Results_02J.mxd
DATE: 2013/03/22



NOTE
Water Technology Pty. Ltd. has prepared this document in accordance with instruction of GRFMA for their specific use.

DISCLAIMER
GRFMA and Water Technology Pty. Ltd. does not warrant that this document is definitive nor free from error and does not accept liability for any loss caused or arising from reliance upon information provided herein.

Contains DataSA Information

Change in Flood Levels (m)	-0.05 to -0.02	0.10 - 0.20	Proposed Levees
More than 0.20m Lower	No Change (+/- 0.02)	More than 0.20m Higher	
-0.20 to -0.10	0.02 - 0.05	Was Dry, Now Wet	
-0.10 to -0.05	0.05 - 0.10	Was Wet, Now Dry	

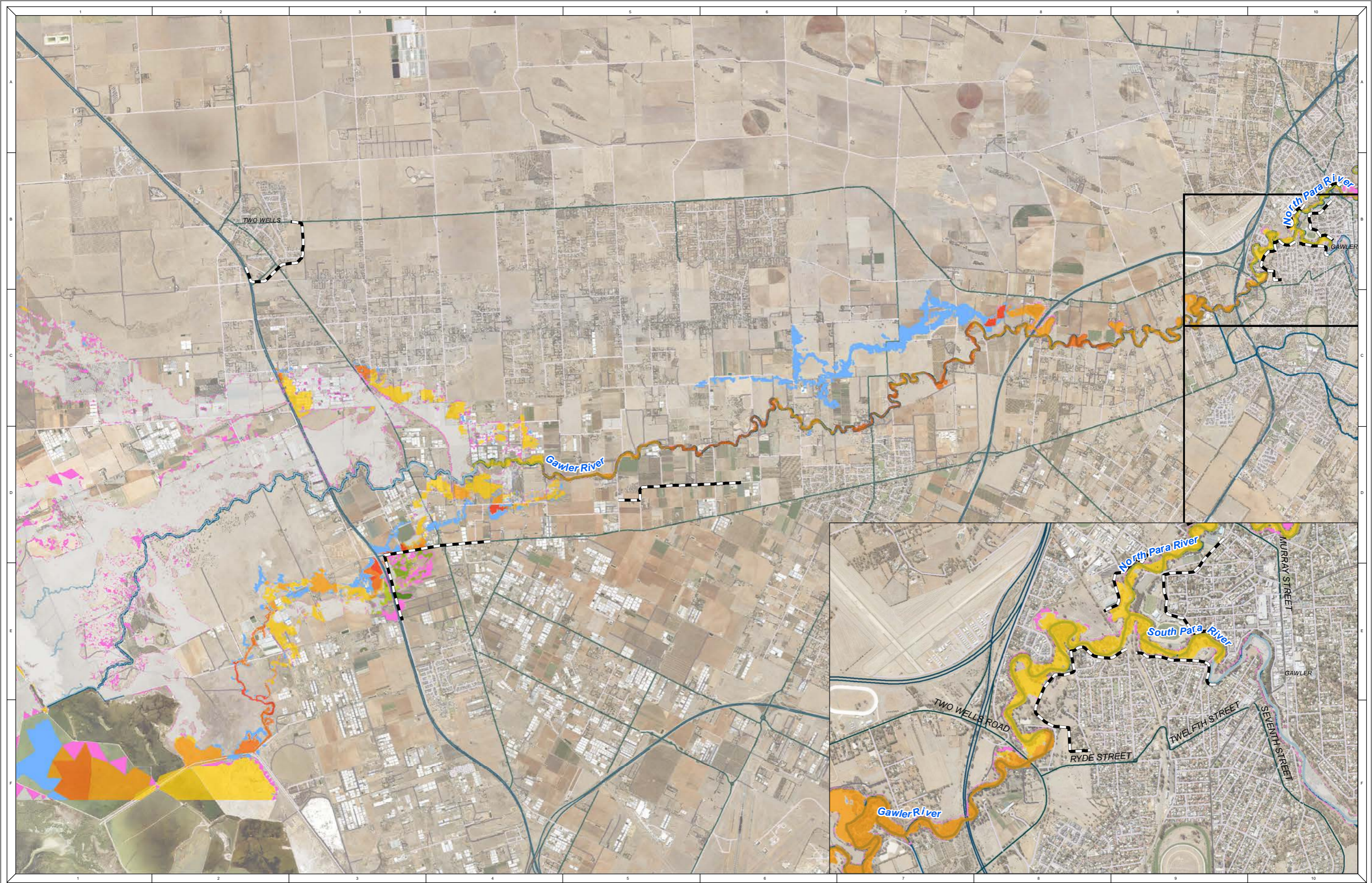
0 0.5 1 2 Kilometers

1:69,500 at A3



Gawler River Stormwater Management Plan
Figure C.04: 10% AEP - Strategic Levees - Flood Difference

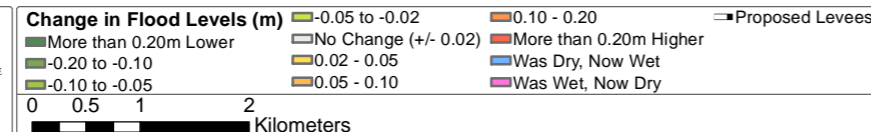
REFERENCE: M:\21030183_Gawler River SMP\Spatial\Worksp\21030183_Gawler_River_SMP_Results_02J_Difference.mxd
 DATE: 28/12/2022



NOTE
Water Technology Pty. Ltd. has prepared this document in accordance with instruction of GRFMA for their specific use.

DISCLAIMER
GRFMA and Water Technology Pty. Ltd. does not warrant that this document is definitive nor free from error and does not accept liability for any loss caused or arising from reliance upon information provided herein.

Contains DataSA Information

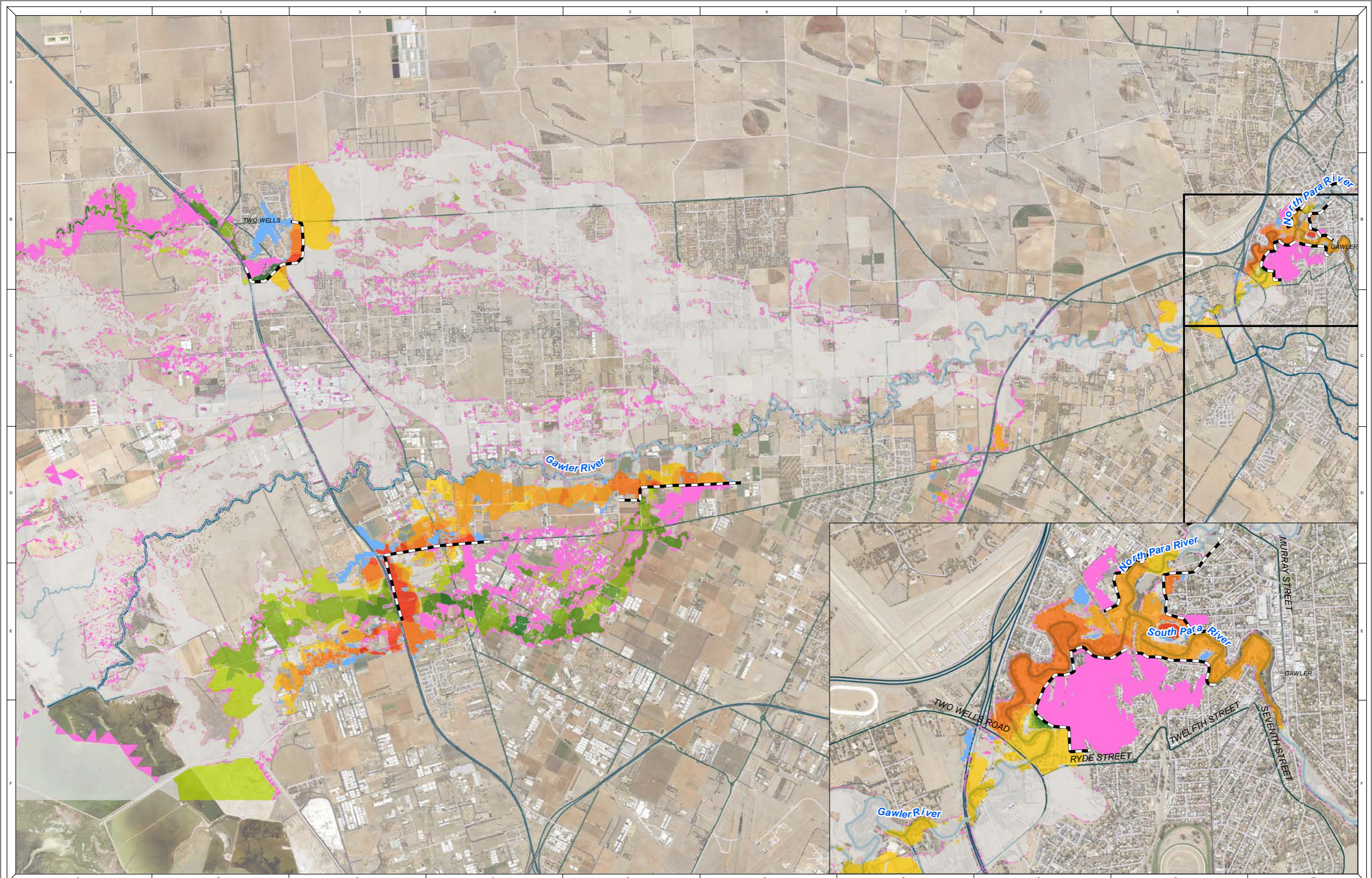


1:69,500 at A3



Gawler River Stormwater Management Plan
Figure C.05: 5% AEP - Strategic Levees - Flood Difference



REFERENCE: M:\21030183_Gawler River SMP\Spatial\Worksp\21030183_Gawler River SMP_Results_02J_Difference.mxd
DATE: 28/12/2022



NOTE
Water Technology Pty. Ltd. has prepared this document in accordance with instruction of GRFMA and Water Technology Pty. Ltd. does not warrant that this document is definitive nor free from error and does not accept liability for any loss caused or arising from reliance upon information provided herein.

DISCLAIMER
GRFMA and Water Technology Pty. Ltd. does not warrant that this document is definitive nor free from error and does not accept liability for any loss caused or arising from reliance upon information provided herein.

Contains DataSA Information

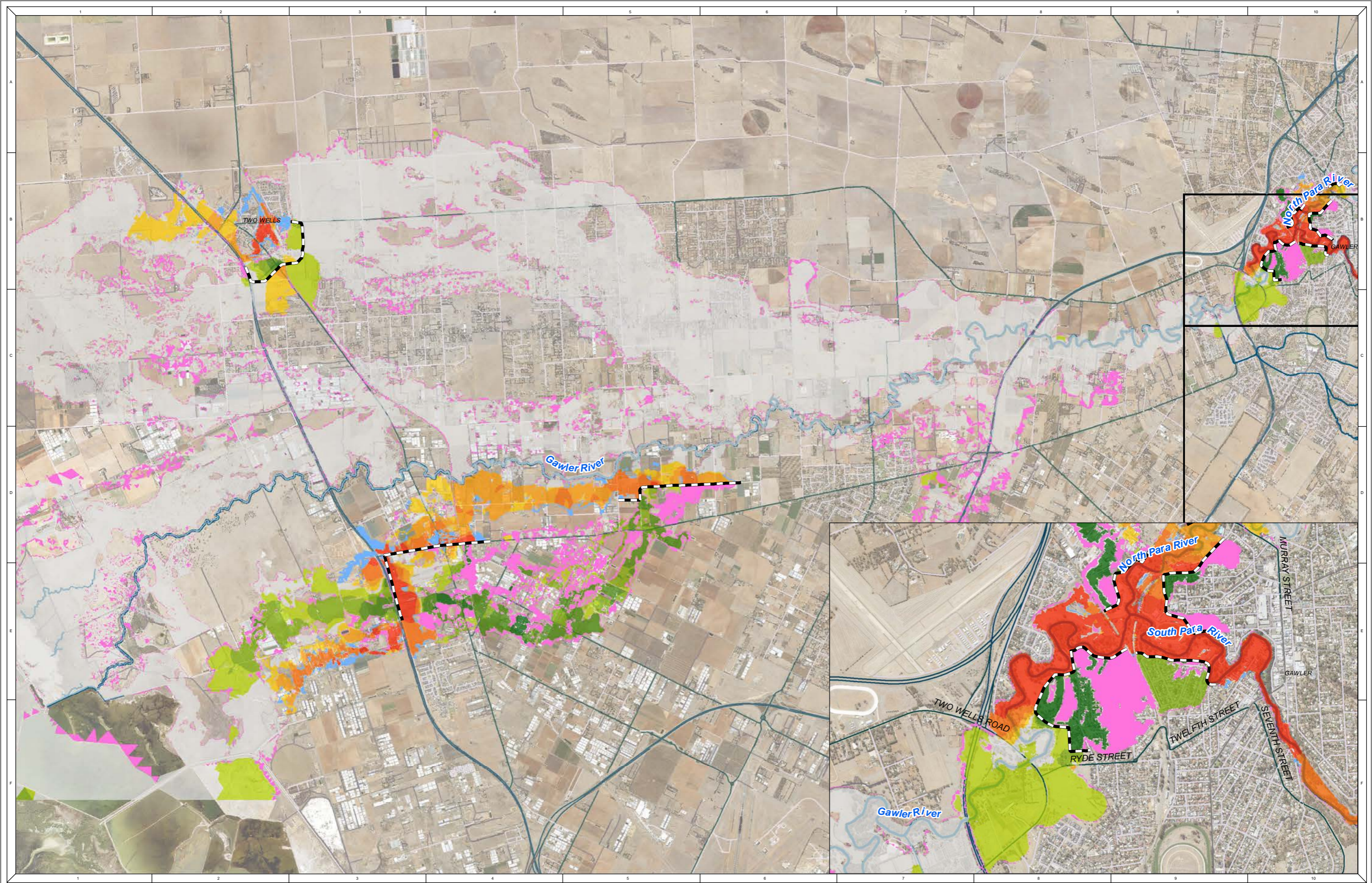
	Change in Flood Levels (m) More than 0.20m Lower -0.20 to -0.10 -0.10 to -0.05	 0.02 - 0.05 0.05 - 0.10 0.10 - 0.20 More than 0.20m Higher	 Was Dry, Now Wet Was Wet, Now Dry Proposed Levels
			

1:69,500 at A3



Gawler River Stormwater Management Plan
Figure C.06: 2% AEP - Strategic Levels - Flood Difference

REFERENCE: M:\21030183_Gawler River SMP\Spatial\Worksp\21030183_Gawler River SMP_Results_02J_Difference.mxd
DATE: 28/12/2022



NOTE
Water Technology Pty. Ltd. has prepared this document in accordance with instruction of GRFMA for their specific use.

DISCLAIMER
GRFMA and Water Technology Pty. Ltd. does not warrant that this document is definitive nor free from error and does not accept liability for any loss caused or arising from reliance upon information provided herein.

Contains DataSA Information

Change in Flood Levels (m)		0.10 - 0.20	→ Proposed Levels
More than 0.20m Lower	No Change (+/- 0.02)	More than 0.20m Higher	
-0.20 to -0.10	0.02 - 0.05	Was Dry, Now Wet	
-0.10 to -0.05	0.05 - 0.10	Was Wet, Now Dry	

0 0.5 1 2 Kilometers

1:69,500 at A3



Gawler River Stormwater Management Plan
Figure C.07: 1% AEP - Strategic Levels - Flood Difference

REFERENCE: M:\21030183_Gawler River SMP\Spatial\Worksp\ass\21030183_Gawler_River_SMP_Results_02J_Difference.mxd
DATE: 18/12/23